

Monthly Market Report - May 2025



CALIFORNIA REAL ESTATE BROKERS, INC.

MetroList All Areas

May 2025 vs Apr 2025

New Listing

5709 5683 0%

Pended

3497 3295 6% ↑

Sold

3121 3093 1% ↑

Avg DOM

34 34 0%

Month of Inventory

2.7 2.6 4% ↑

New Listing By County

May 2025 vs Apr 2025

| | | | | |
|-------------|------|------|------|---|
| Amador | 125 | 108 | 16% | ↑ |
| Butte | 46 | 49 | -6% | ↓ |
| Calaveras | 117 | 147 | -20% | ↓ |
| Colusa | 8 | 21 | -62% | ↓ |
| El Dorado | 438 | 414 | 6% | ↑ |
| Merced | 206 | 163 | 26% | ↑ |
| Nevada | 253 | 267 | -5% | ↓ |
| Placer | 806 | 801 | 1% | ↑ |
| Sacramento | 1878 | 1853 | 1% | ↑ |
| San Joaquin | 867 | 866 | 0% | |
| Stanislaus | 540 | 543 | -1% | ↓ |
| Sutter | 94 | 91 | 3% | ↑ |
| Yolo | 197 | 201 | -2% | ↓ |
| Yuba | 134 | 159 | -16% | ↓ |

Pended By County

May 2025 vs Apr 2025

| | | | | |
|-------------|------|------|------|---|
| Amador | 48 | 47 | 2% | ↑ |
| Butte | 33 | 27 | 22% | ↑ |
| Calaveras | 67 | 69 | -3% | ↓ |
| Colusa | 14 | 9 | 56% | ↑ |
| El Dorado | 224 | 216 | 4% | ↑ |
| Merced | 131 | 119 | 10% | ↑ |
| Nevada | 134 | 101 | 33% | ↑ |
| Placer | 472 | 499 | -5% | ↓ |
| Sacramento | 1203 | 1086 | 11% | ↑ |
| San Joaquin | 544 | 493 | 10% | ↑ |
| Stanislaus | 343 | 360 | -5% | ↓ |
| Sutter | 65 | 56 | 16% | ↑ |
| Yolo | 139 | 113 | 23% | ↑ |
| Yuba | 80 | 100 | -20% | ↓ |

Sold By County

May 2025 vs Apr 2025

| | | | | |
|-------------|------|------|------|---|
| Amador | 49 | 41 | 20% | ↑ |
| Butte | 19 | 19 | 0% | |
| Calaveras | 58 | 40 | 45% | ↑ |
| Colusa | 8 | 11 | -27% | ↓ |
| El Dorado | 217 | 187 | 16% | ↑ |
| Merced | 106 | 108 | -2% | ↓ |
| Nevada | 100 | 104 | -4% | ↓ |
| Placer | 457 | 450 | 2% | ↑ |
| Sacramento | 1059 | 1104 | -4% | ↓ |
| San Joaquin | 489 | 444 | 10% | ↑ |
| Stanislaus | 334 | 318 | 5% | ↑ |
| Sutter | 43 | 45 | -4% | ↓ |
| Yolo | 110 | 130 | -15% | ↓ |
| Yuba | 72 | 92 | -22% | ↓ |

Data provided by **MetroList**
THE TRUE SOURCE

Powered by **TrendGraphix**
YOUR HOME FOR REAL ESTATE DATA

*Data represents Residential Property class only.

*Pended represents the number of properties that went into contract during the course of a calendar month.

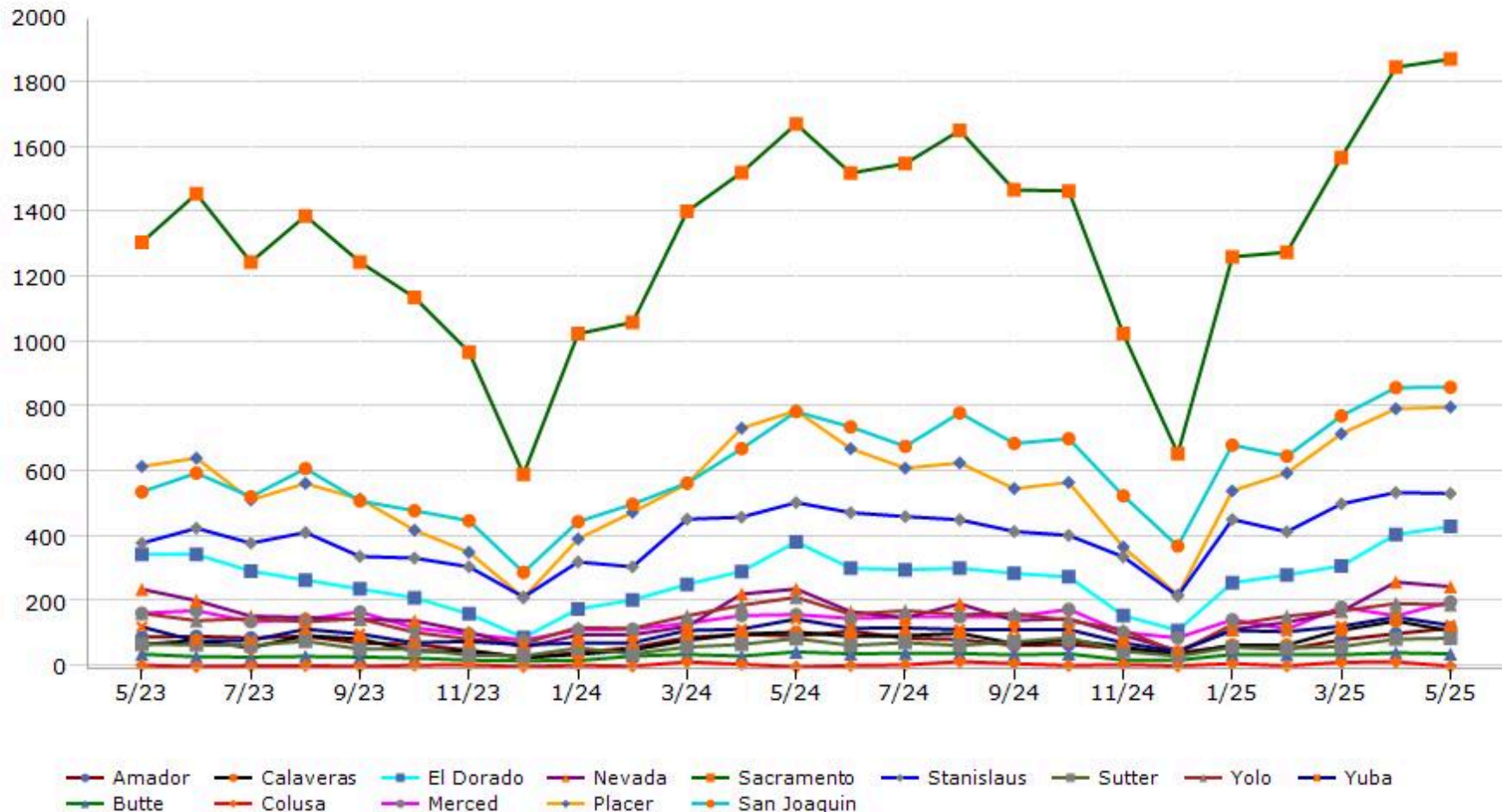
*Month of Inventory is calculated by dividing the number of homes that went into contract in a given calendar month into the number of homes that were active at the end of a given calendar month.

Trending Report: May 2023 - May 2025



CALIFORNIA REAL ESTATE BROKERS, INC.

New Listing



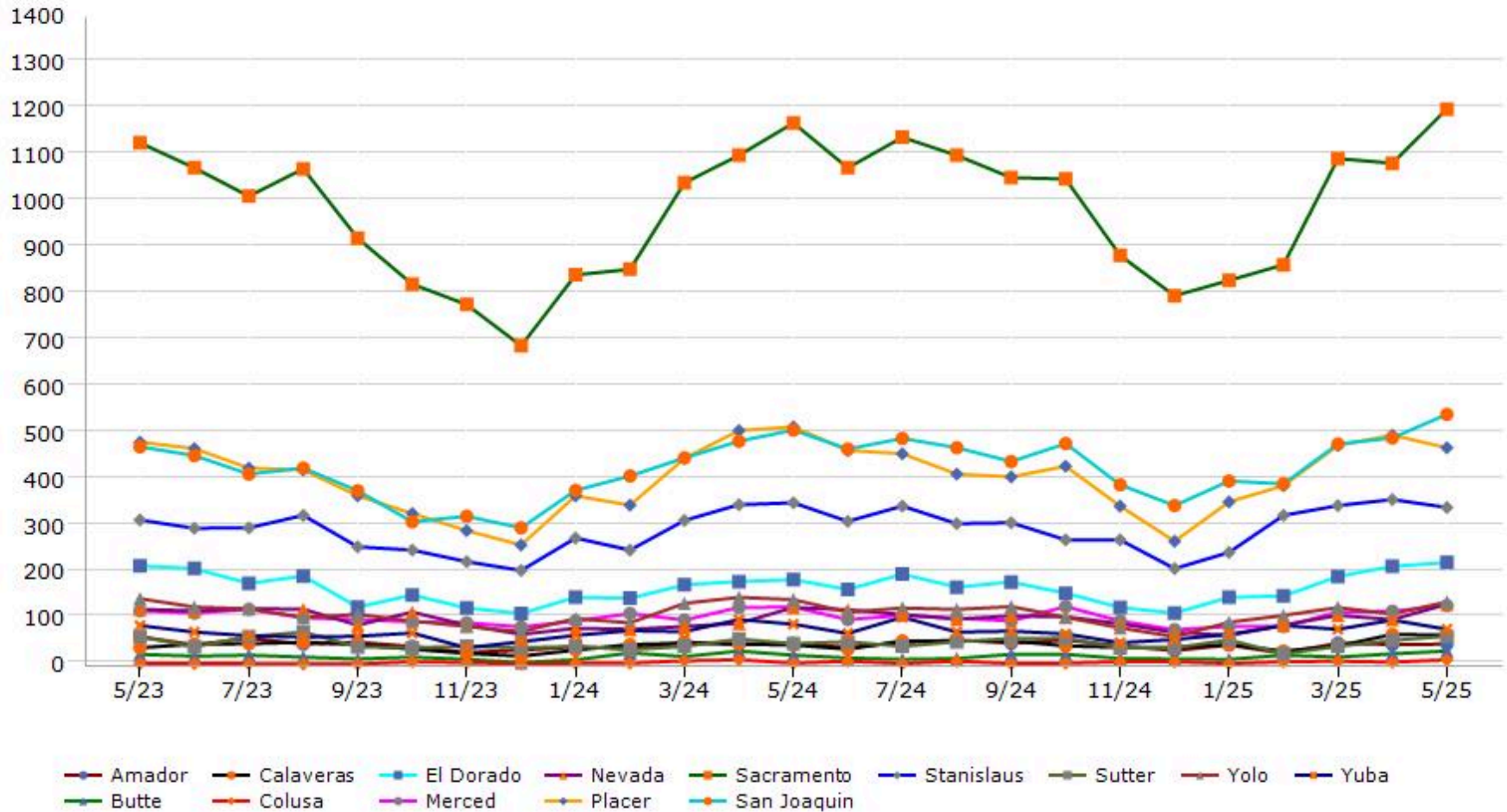
Data provided by **MetroList** THE TRUE SOURCE | Powered by **TrendGraphix** YOUR HOME FOR REAL ESTATE DATA

*Data represents Residential Property class only.

Trending Report: May 2023 - May 2025



Pended



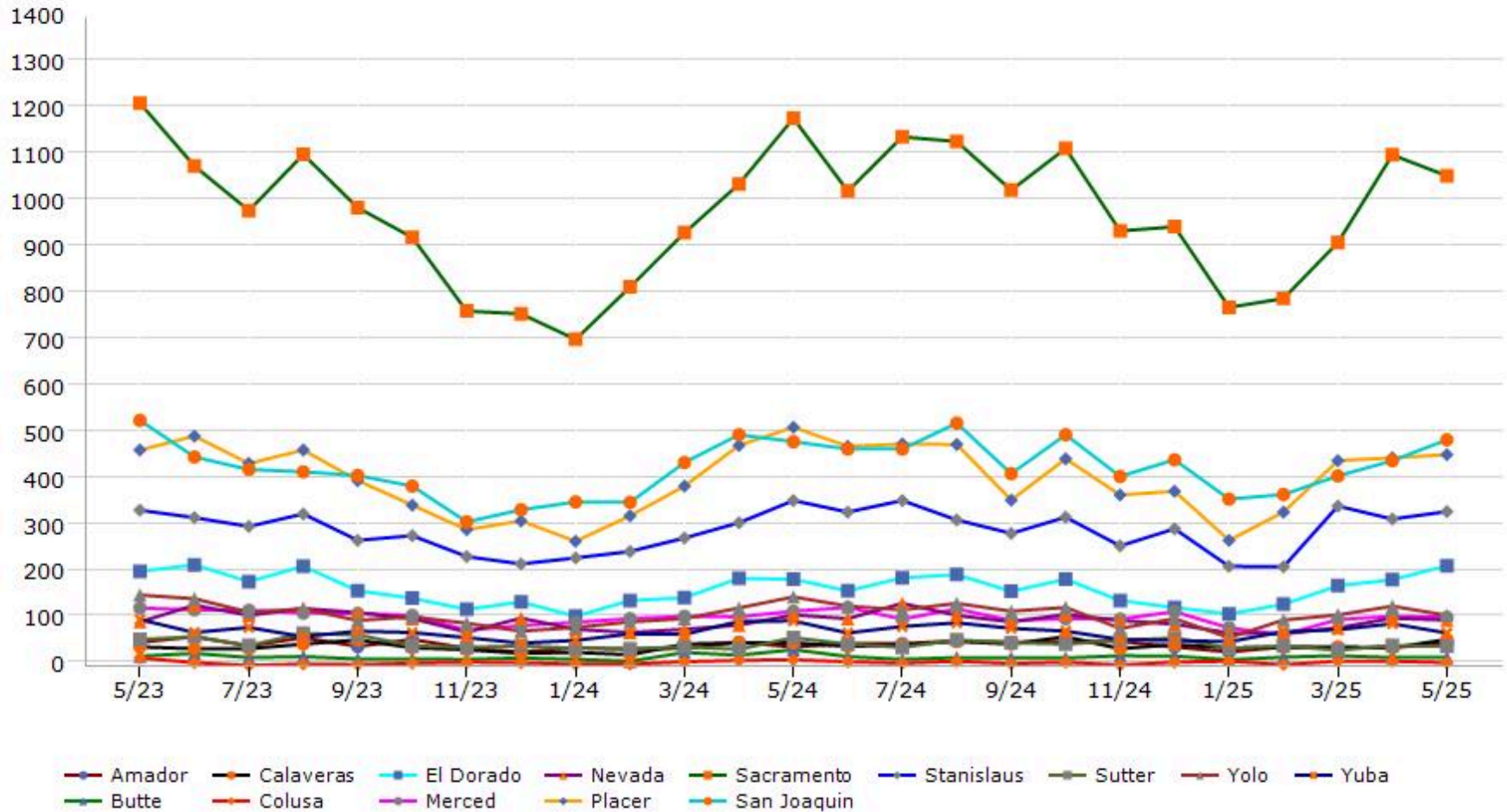
Data provided by **MetroList** THE TRUE SOURCE. Powered by **TrendGraphix** YOUR HOME FOR REAL ESTATE DATA.

*Data represents Residential Property class only.
 *Pended represents the number of properties that went into contract during the course of a calendar month.

Trending Report: May 2023 - May 2025



Sold



Data provided by **MetroList** THE TRUE SOURCE | Powered by **TrendGraphix** YOUR HOME FOR REAL ESTATE DATA

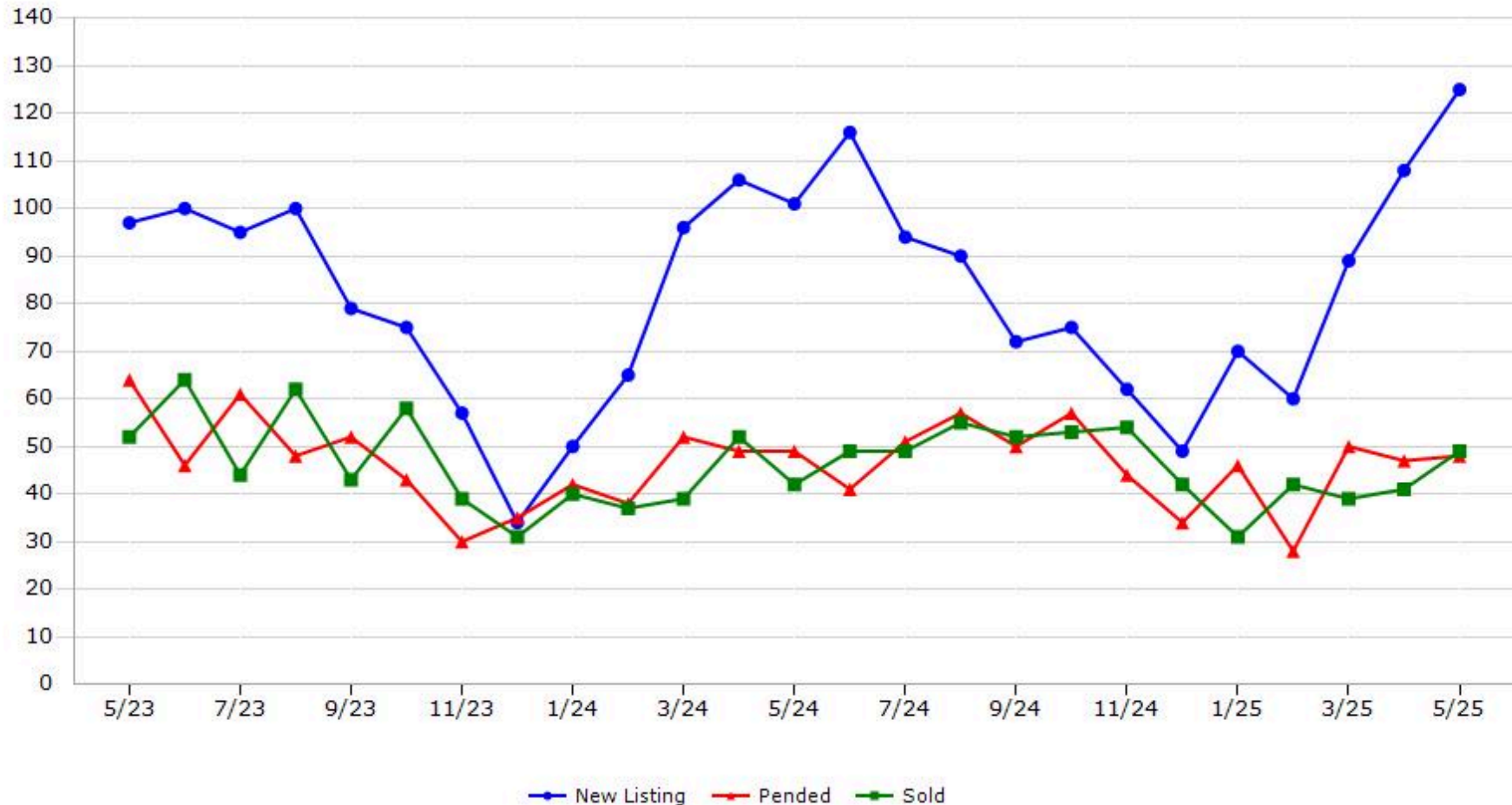
*Data represents Residential Property class only.

Trending Report: May 2023 - May 2025



CALIFORNIA REAL ESTATE BROKERS, INC.

Amador County



Data provided by **MetroList**® THE TRUE SOURCE Powered by **TrendGraphix** YOUR HOME FOR REAL ESTATE DATA

*Data represents Residential Property class only.

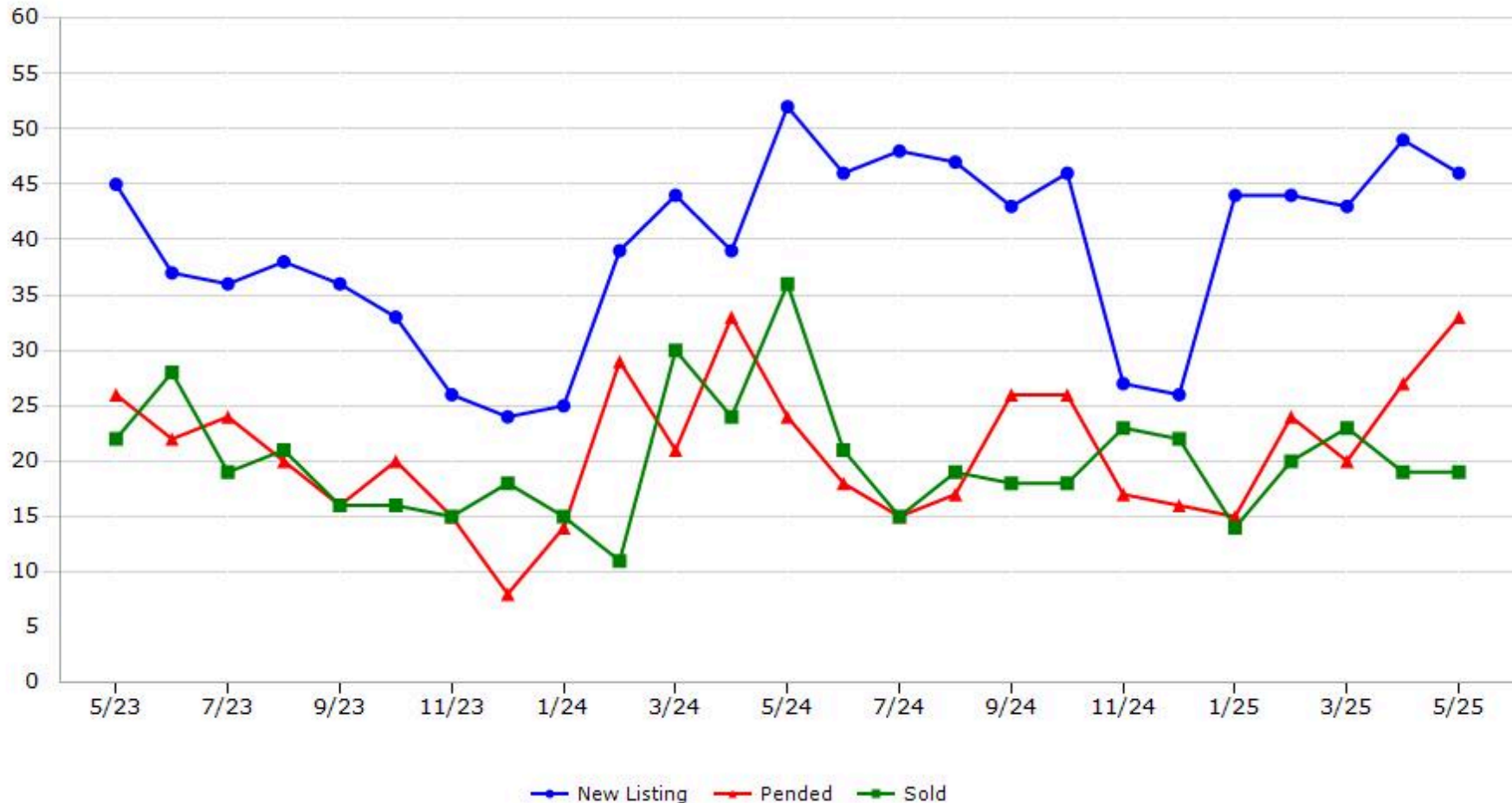
*Pended represents the number of properties that went into contract during the course of a calendar month.

Trending Report: May 2023 - May 2025



CALIFORNIA REAL ESTATE BROKERS, INC.

Butte County



Data provided by **MetroList** THE TRUE SOURCE Powered by **TrendGraphix** YOUR HOME FOR REAL ESTATE DATA

*Data represents Residential Property class only.

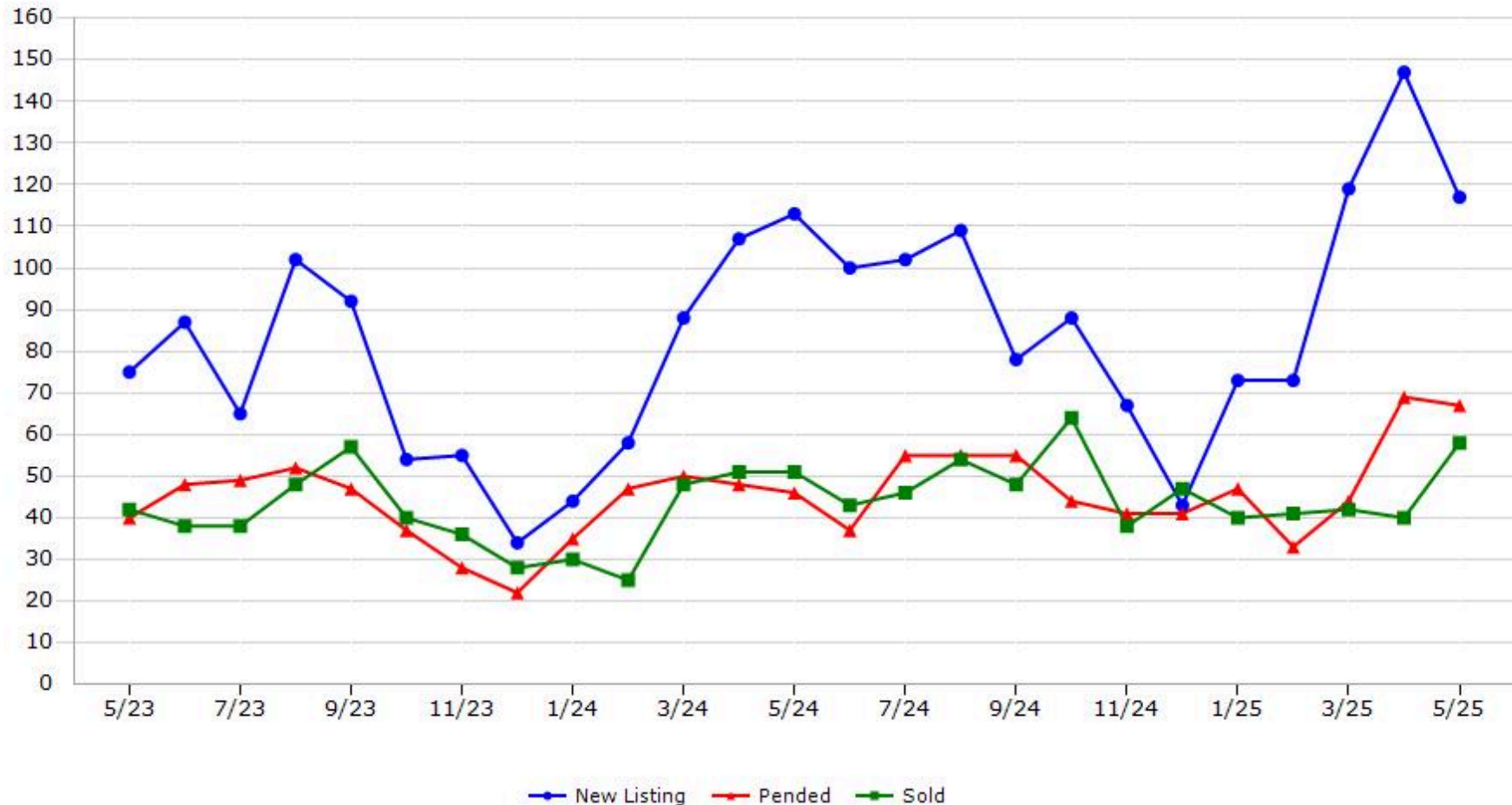
*Pended represents the number of properties that went into contract during the course of a calendar month.

Trending Report: May 2023 - May 2025



CALIFORNIA REAL ESTATE BROKERS, INC.

Calaveras County



Data provided by **MetroList**® THE TRUE SOURCE Powered by **TrendGraphix** YOUR HOME FOR REAL ESTATE DATA

*Data represents Residential Property class only.

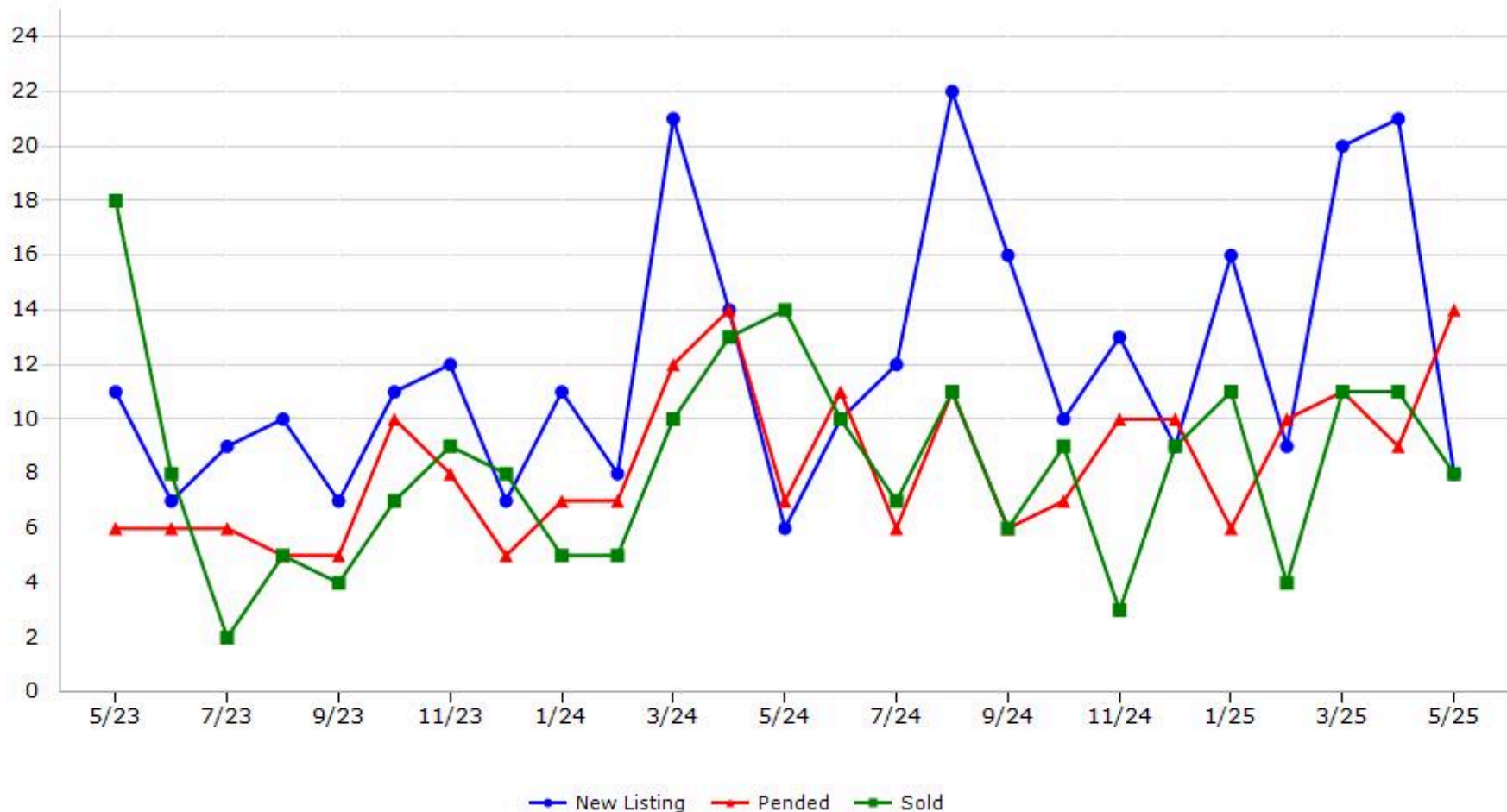
*Pended represents the number of properties that went into contract during the course of a calendar month.

Trending Report: May 2023 - May 2025



CALIFORNIA REAL ESTATE BROKERS, INC.

Colusa County



Data provided by **MetroList** THE TRUE SOURCE Powered by **TrendGraphix** YOUR HOME FOR REAL ESTATE DATA

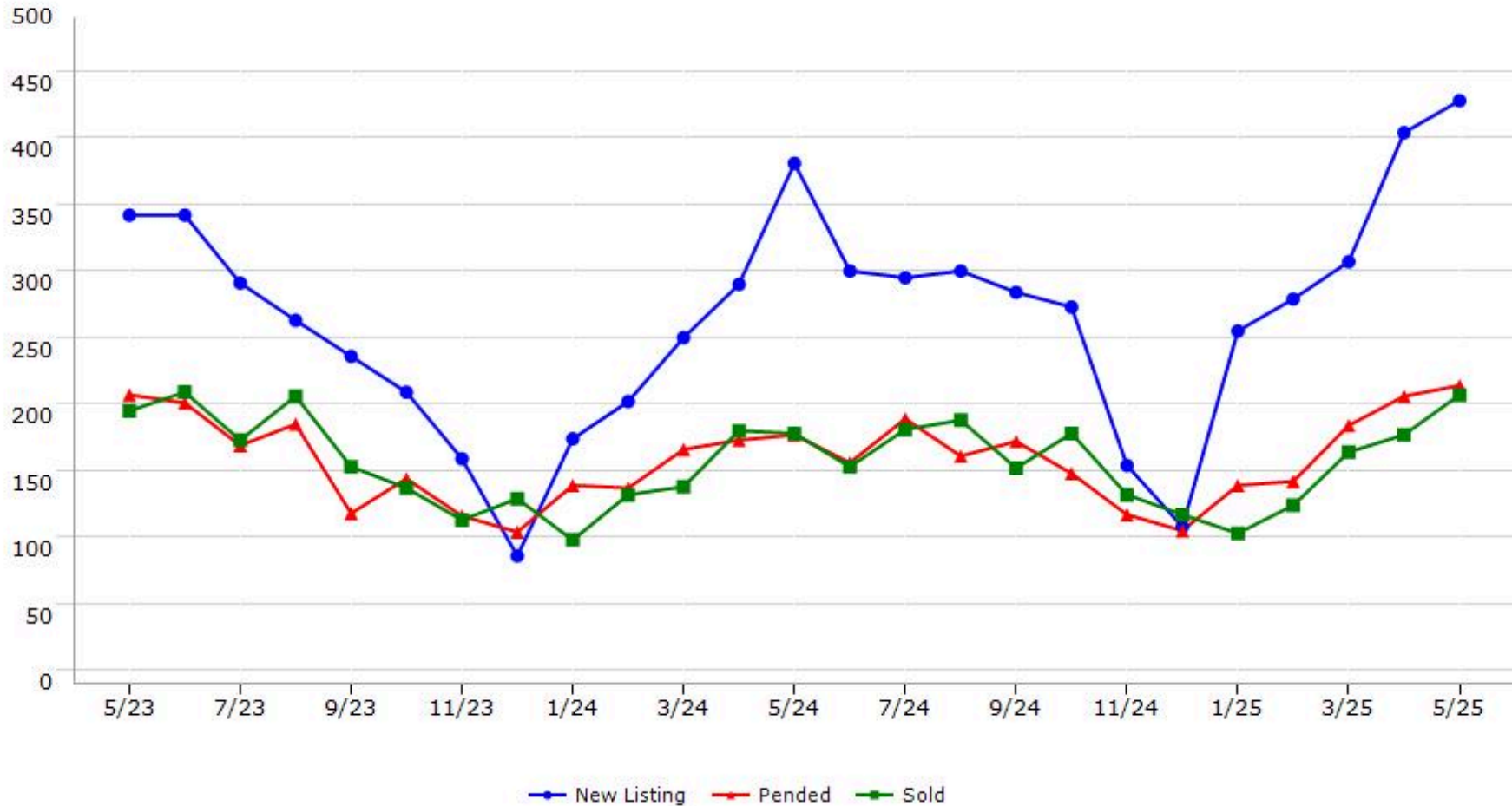
*Data represents Residential Property class only.
*Pended represents the number of properties that went into contract during the course of a calendar month.

Trending Report: May 2023 - May 2025



CALIFORNIA REAL ESTATE BROKERS, INC.

El Dorado County



Data provided by **MetroList** THE TRUE SOURCE Powered by **TrendGraphix** YOUR HOME FOR REAL ESTATE DATA

*Data represents Residential Property class only.

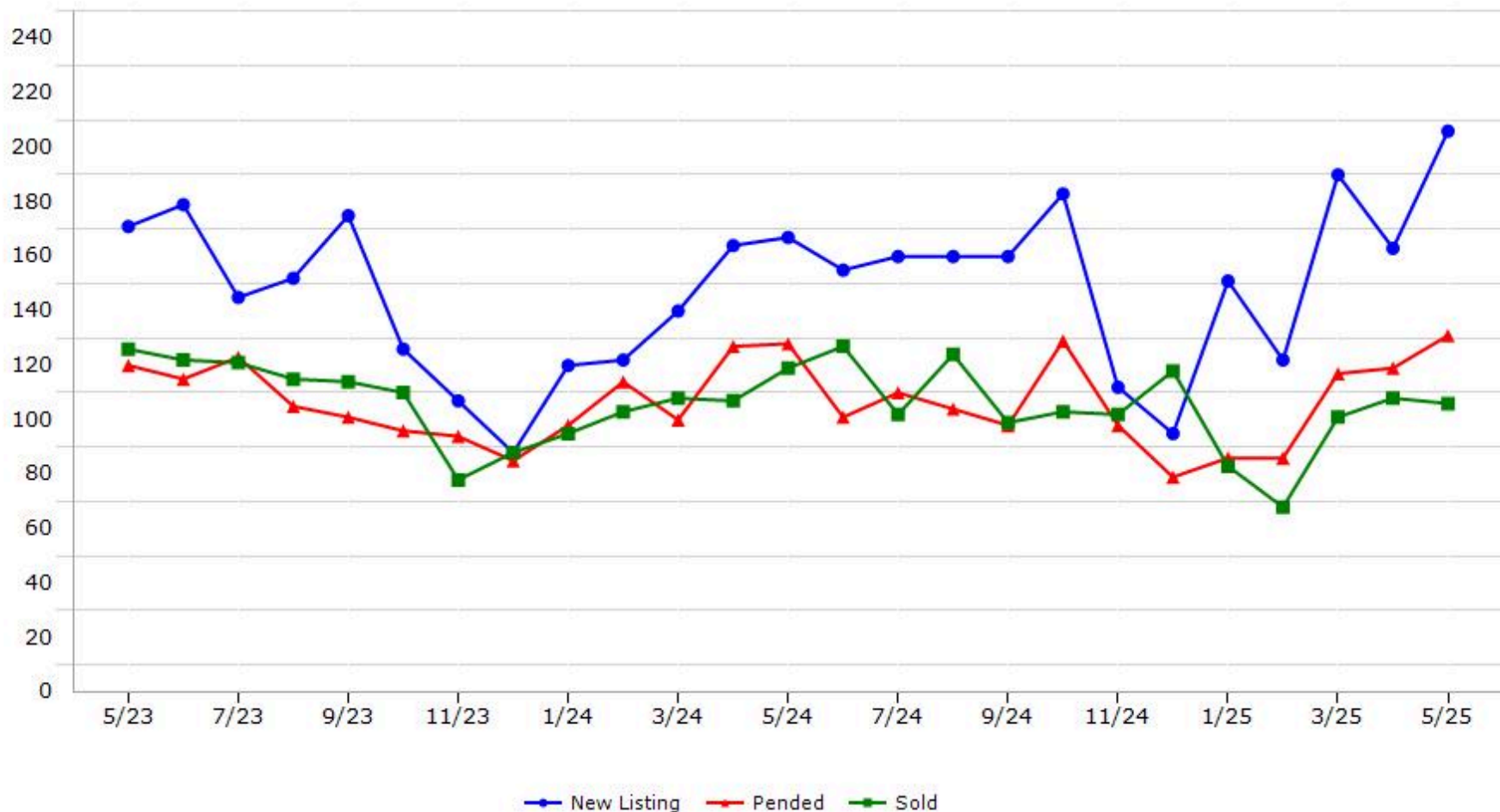
*Pended represents the number of properties that went into contract during the course of a calendar month.

Trending Report: May 2023 - May 2025



CALIFORNIA REAL ESTATE BROKERS, INC.

Merced County



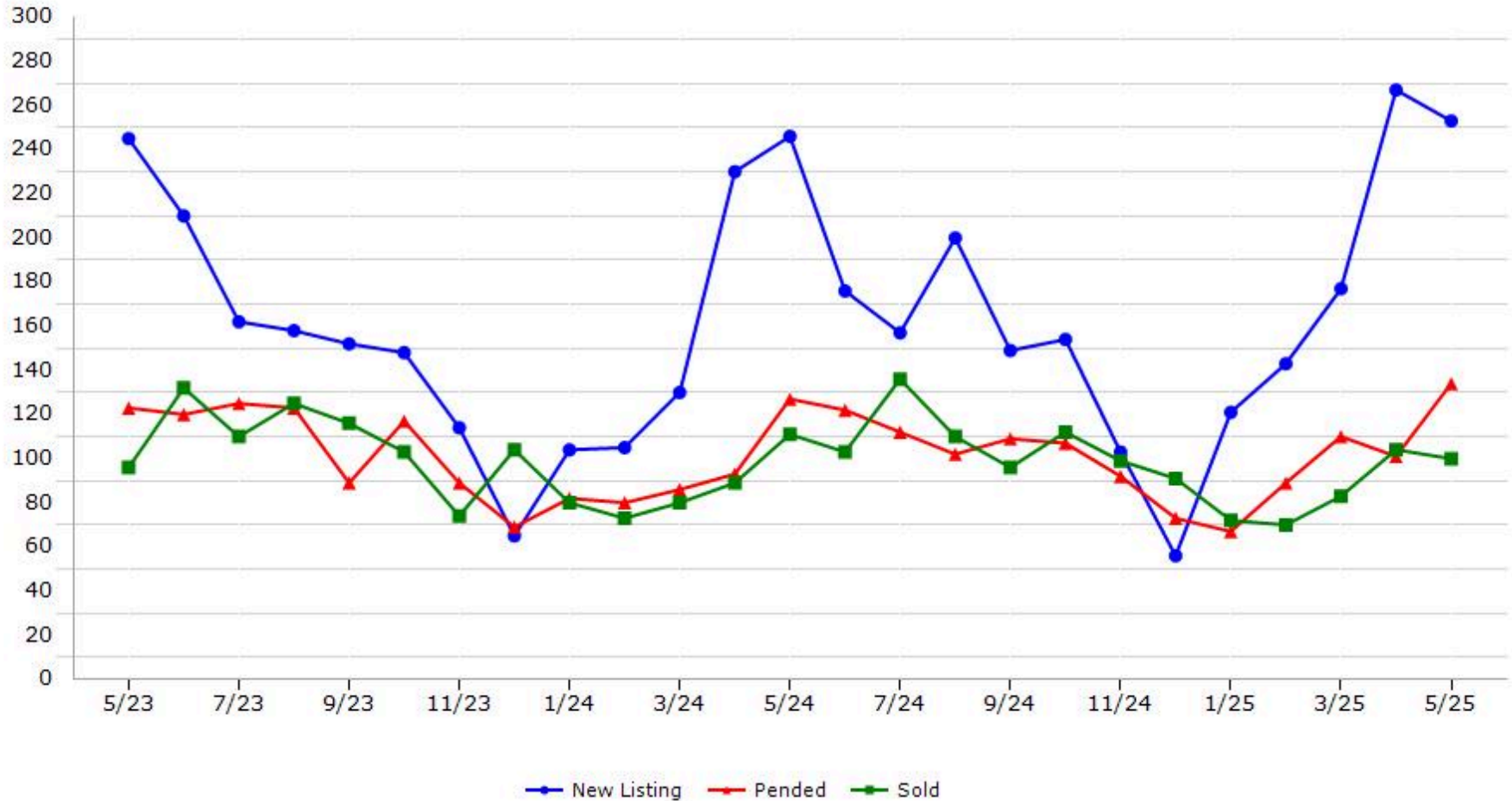
Data provided by **MetroList**® THE TRUE SOURCE Powered by **TrendGraphix** YOUR HOME FOR REAL ESTATE DATA

*Data represents Residential Property class only.
*Pended represents the number of properties that went into contract during the course of a calendar month.

Trending Report: May 2023 - May 2025



Nevada County



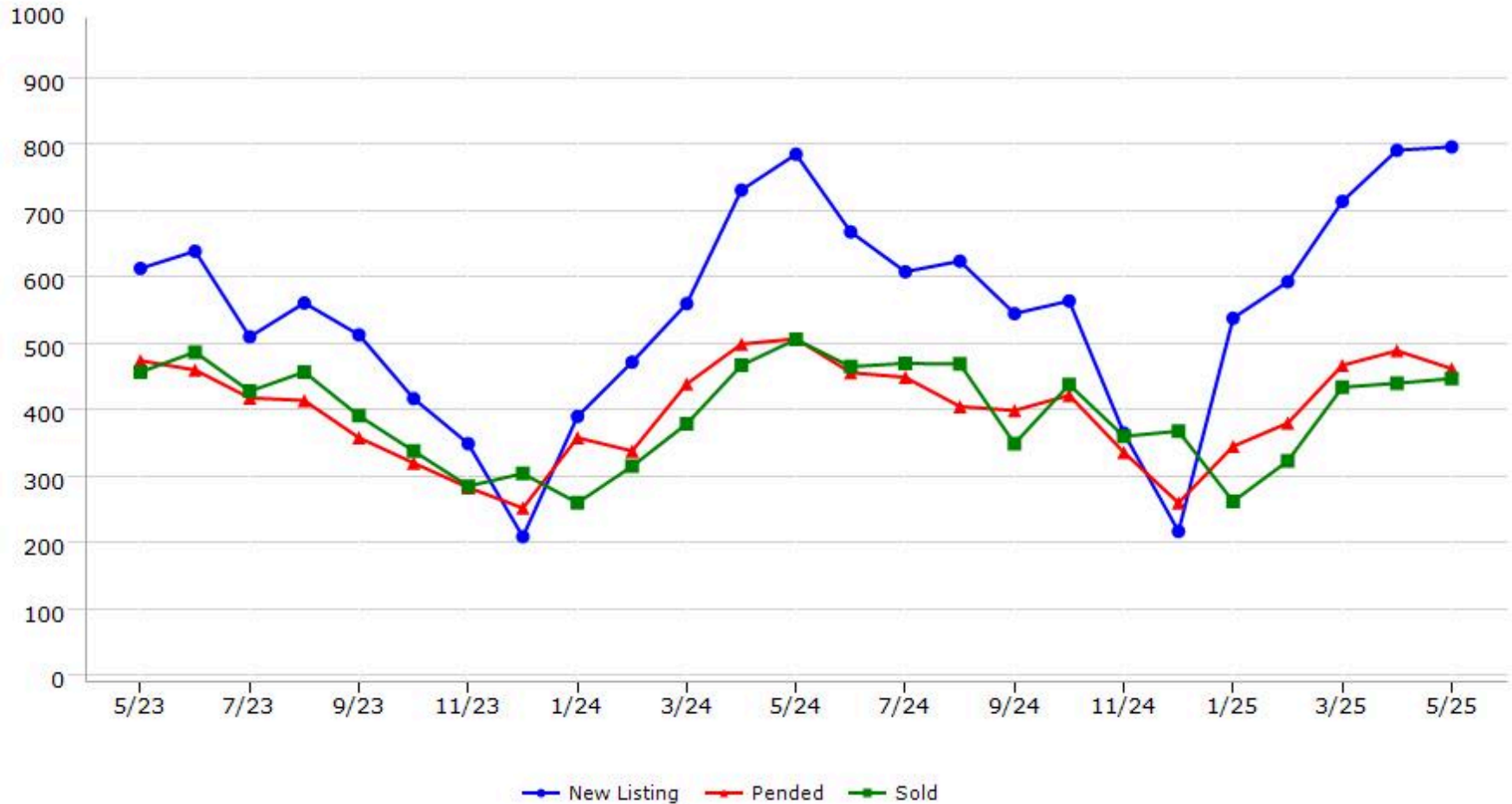
Data provided by **MetroList**® THE TRUE SOURCE | Powered by **TrendGraphix** YOUR HOME FOR REAL ESTATE DATA

*Data represents Residential Property class only.
*Pended represents the number of properties that went into contract during the course of a calendar month.

Trending Report: May 2023 - May 2025



Placer County



Data provided by **MetroList**® THE TRUE SOURCE Powered by **TrendGraphix** YOUR HOME FOR REAL ESTATE DATA

*Data represents Residential Property class only.

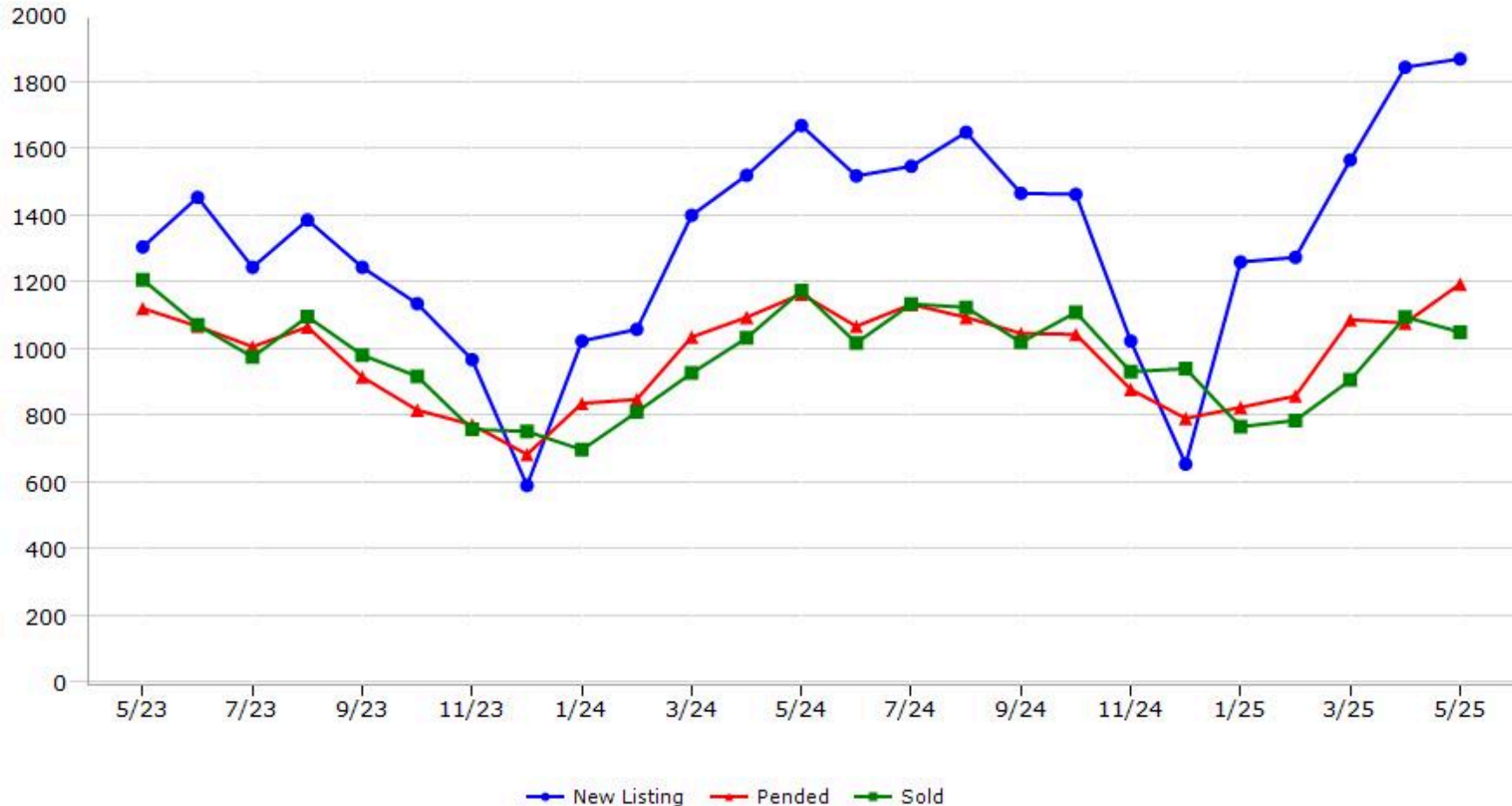
*Pended represents the number of properties that went into contract during the course of a calendar month.

Trending Report: May 2023 - May 2025



CALIFORNIA REAL ESTATE BROKERS, INC.

Sacramento County



Data provided by **MetroList** THE TRUE SOURCE. Powered by **TrendGraphix** YOUR HOME FOR REAL ESTATE DATA.

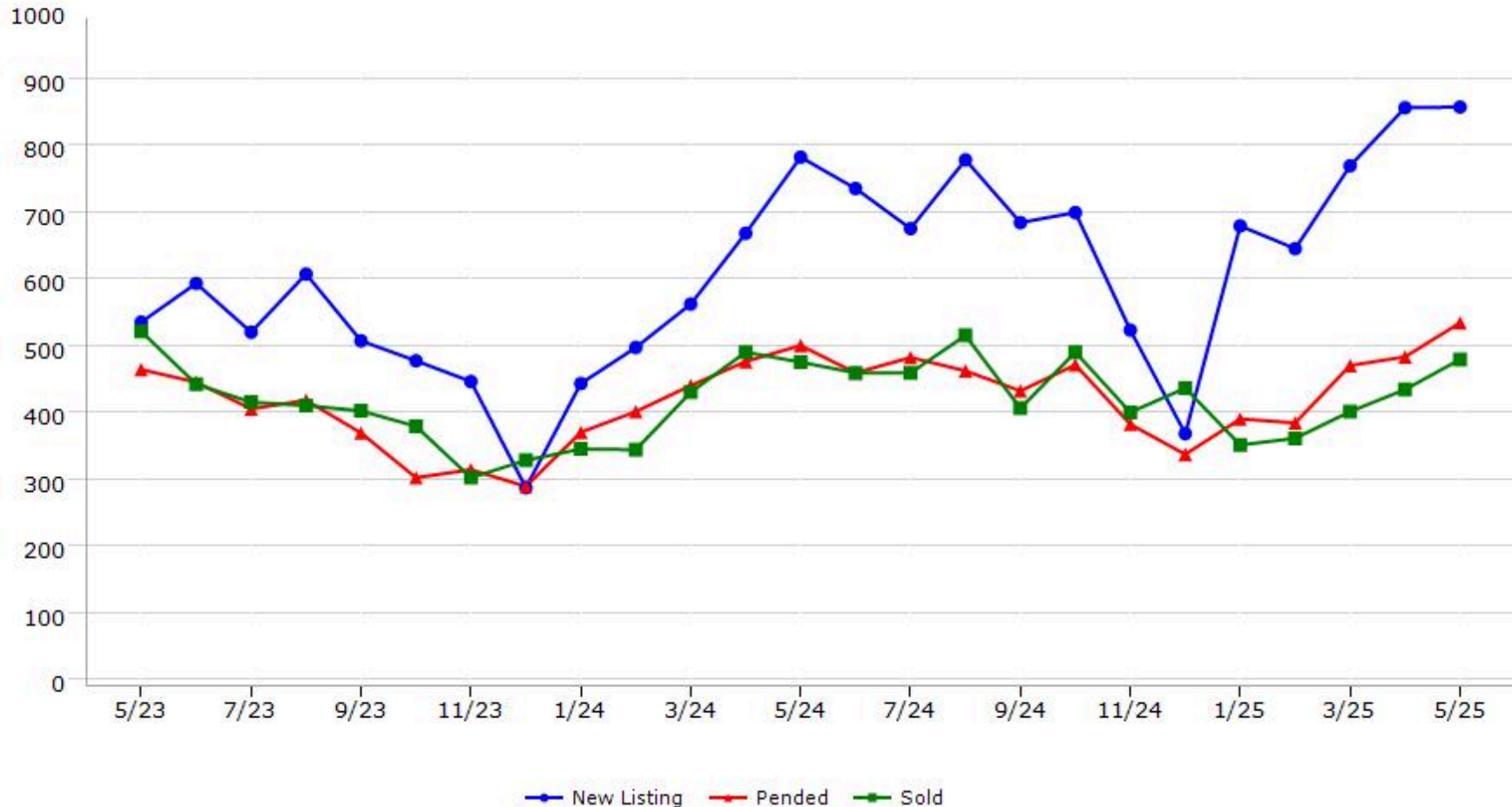
*Data represents Residential Property class only.
*Pended represents the number of properties that went into contract during the course of a calendar month.

Trending Report: May 2023 - May 2025



CALIFORNIA REAL ESTATE BROKERS, INC.

San Joaquin County



Data provided by **MetroList**® THE TRUE SOURCE Powered by **TrendGraphix** YOUR HOME FOR REAL ESTATE DATA

*Data represents Residential Property class only.

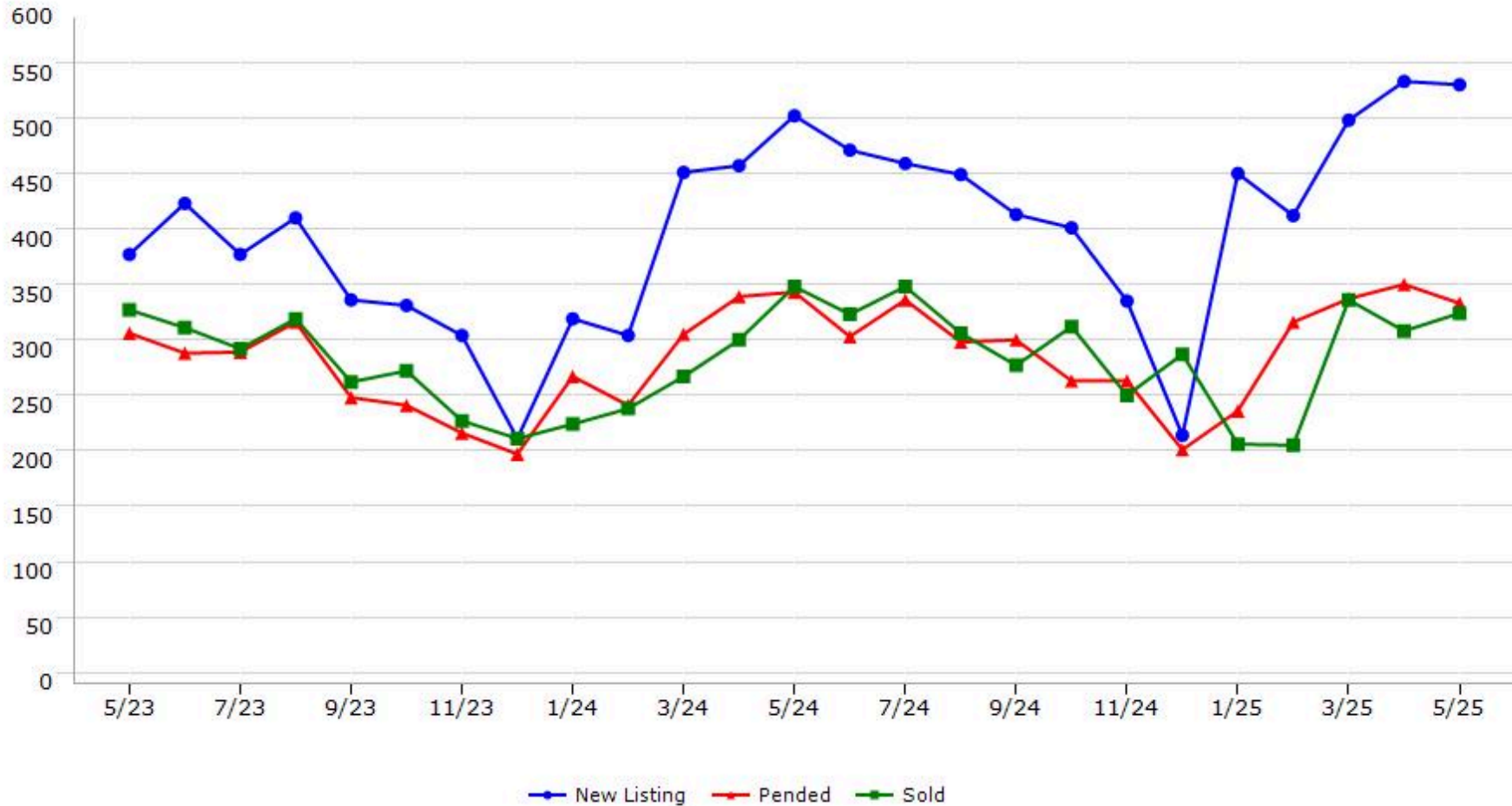
*Pended represents the number of properties that went into contract during the course of a calendar month.

Trending Report: May 2023 - May 2025



CALIFORNIA REAL ESTATE BROKERS, INC.

Stanislaus County



Data provided by **MetroList**® THE TRUE SOURCE Powered by **TrendGraphix** YOUR HOME FOR REAL ESTATE DATA

*Data represents Residential Property class only.

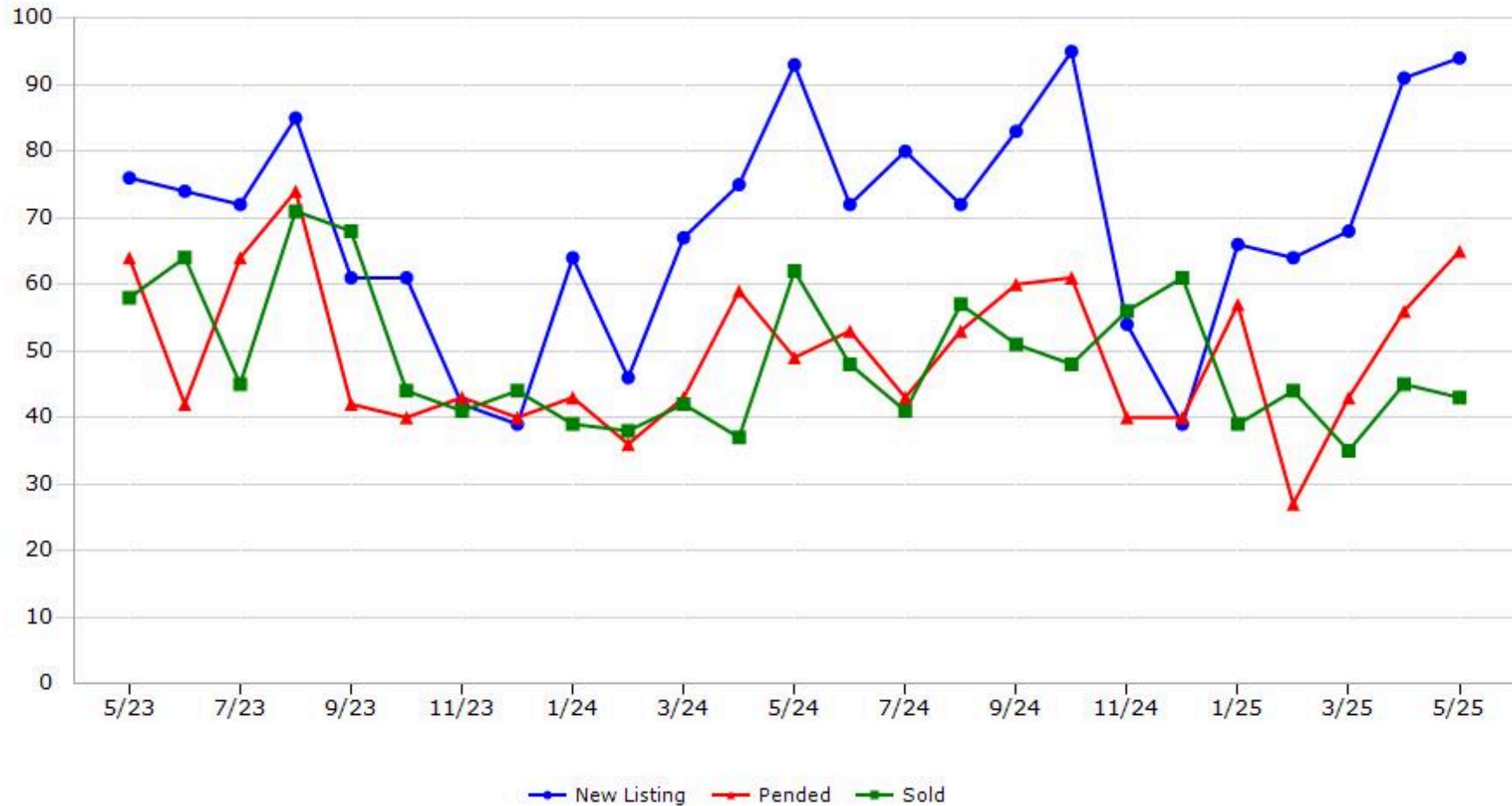
*Pended represents the number of properties that went into contract during the course of a calendar month.

Trending Report: May 2023 - May 2025



CALIFORNIA REAL ESTATE BROKERS, INC.

Sutter County



Data provided by **MetroList** THE TRUE SOURCE. Powered by **TrendGraphix** YOUR HOME FOR REAL ESTATE DATA.

*Data represents Residential Property class only.

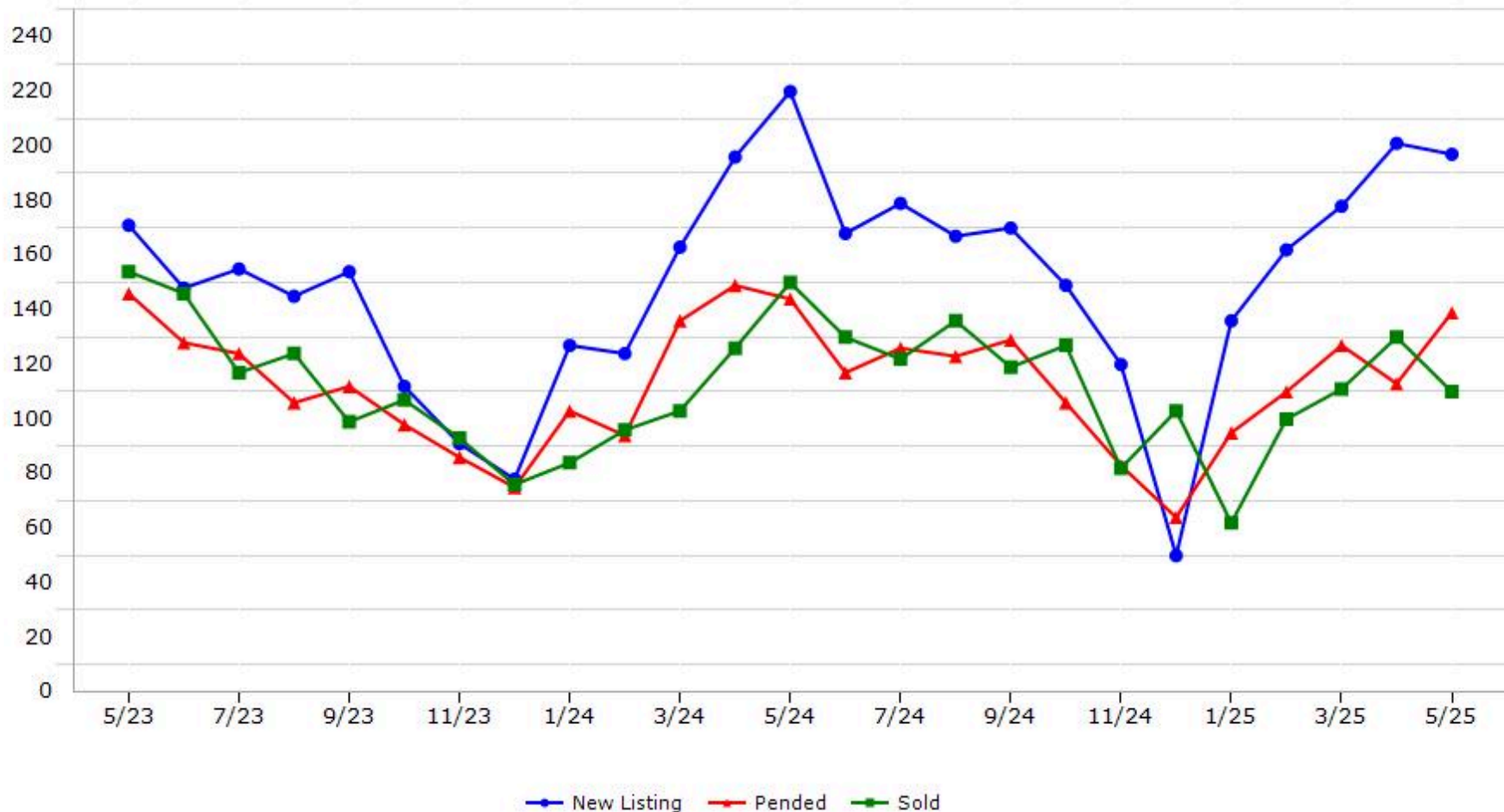
*Pended represents the number of properties that went into contract during the course of a calendar month.

Trending Report: May 2023 - May 2025



CALIFORNIA REAL ESTATE BROKERS, INC.

Yolo County



Data provided by **MetroList** THE TRUE SOURCE Powered by **TrendGraphix** YOUR HOME FOR REAL ESTATE DATA

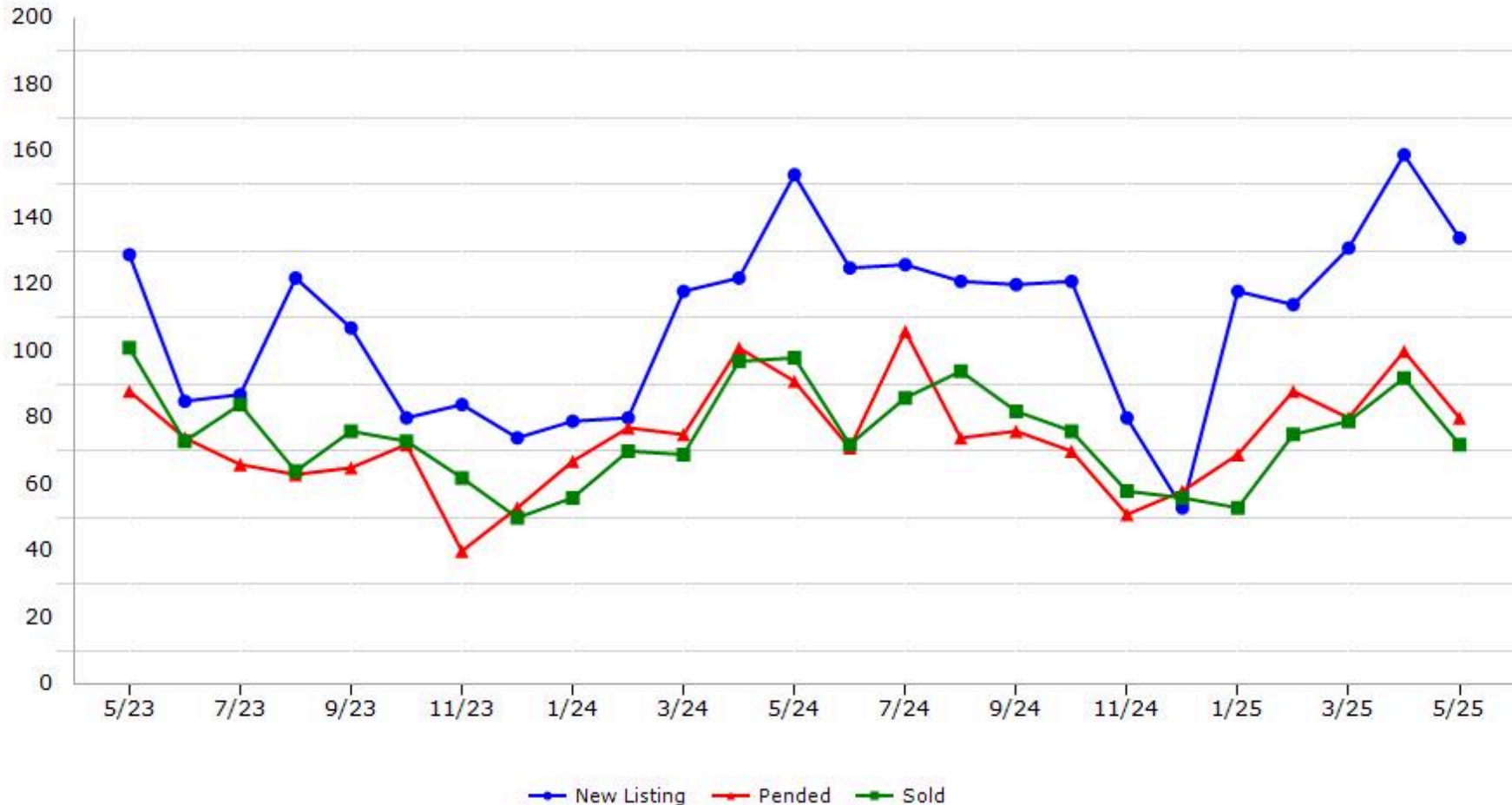
*Data represents Residential Property class only.
*Pended represents the number of properties that went into contract during the course of a calendar month.

Trending Report: May 2023 - May 2025



CALIFORNIA REAL ESTATE BROKERS, INC.

Yuba County



Data provided by **MetroList**® THE TRUE SOURCE. Powered by **TrendGraphix** YOUR HOME FOR REAL ESTATE DATA.

*Data represents Residential Property class only.
*Pended represents the number of properties that went into contract during the course of a calendar month.