

# Monthly Market Report - July 2025



CALIFORNIA REAL ESTATE BROKERS, INC.

## MetroList All Areas

Jul 2025 vs Jun 2025

### New Listing

5047    5053    0%

### Pended

3420    3063    12% ↑

### Sold

3050    3054    0%

### Avg DOM

38    35    9% ↑

### Month of Inventory

3    3.3    -9% ↓

## New Listing By County

Jul 2025 vs Jun 2025

Amador	82	100	-18%	↓
Butte	50	44	14%	↑
Calaveras	105	92	14%	↑
Colusa	18	19	-5%	↓
El Dorado	349	364	-4%	↓
Merced	175	193	-9%	↓
Nevada	160	205	-22%	↓
Placer	676	713	-5%	↓
Sacramento	1679	1688	-1%	↓
San Joaquin	797	764	4%	↑
Stanislaus	562	481	17%	↑
Sutter	80	84	-5%	↓
Yolo	187	175	7%	↑
Yuba	127	135	-6%	↓

## Pended By County

Jul 2025 vs Jun 2025

Amador	64	45	42%	↑
Butte	36	16	125%	↑
Calaveras	58	57	2%	↑
Colusa	8	6	33%	↑
El Dorado	201	182	10%	↑
Merced	120	112	7%	↑
Nevada	128	119	8%	↑
Placer	451	461	-2%	↓
Sacramento	1215	1107	10%	↑
San Joaquin	494	441	12%	↑
Stanislaus	347	288	20%	↑
Sutter	64	46	39%	↑
Yolo	151	117	29%	↑
Yuba	85	66	29%	↑

## Sold By County

Jul 2025 vs Jun 2025

Amador	47	40	18%	↑
Butte	17	28	-39%	↓
Calaveras	49	64	-23%	↓
Colusa	8	11	-27%	↓
El Dorado	187	194	-4%	↓
Merced	129	106	22%	↑
Nevada	113	122	-7%	↓
Placer	449	418	7%	↑
Sacramento	1107	1027	8%	↑
San Joaquin	427	476	-10%	↓
Stanislaus	290	315	-8%	↓
Sutter	46	59	-22%	↓
Yolo	111	132	-16%	↓
Yuba	70	62	13%	↑

Data provided by **MetroList**  
THE TRUE SOURCE

Powered by **TrendGraphix**  
YOUR HOME FOR REAL ESTATE DATA

\*Data represents Residential Property class only.

\*Pended represents the number of properties that went into contract during the course of a calendar month.

\*Month of Inventory is calculated by dividing the number of homes that went into contract in a given calendar month into the number of homes that were active at the end of a given calendar month.

# Monthly Market Report - July 2025 vs July 2024



CALIFORNIA REAL ESTATE BROKERS, INC.

## MetroList All Areas

Jul 2025 vs Jul 2024

### New Listing

5047 4591 10% ↑

### Pended

3420 3262 5% ↑

### Sold

3050 3245 -6% ↓

### Avg DOM

38 29 31% ↑

### Month of Inventory

3 2.2 36% ↑

## New Listing By County

Jul 2025 vs Jul 2024

Amador	82	94	-13%	↓
Butte	50	48	4%	↑
Calaveras	105	102	3%	↑
Colusa	18	12	50%	↑
El Dorado	349	305	14%	↑
Merced	175	160	9%	↑
Nevada	160	157	2%	↑
Placer	676	618	9%	↑
Sacramento	1679	1556	8%	↑
San Joaquin	797	685	16%	↑
Stanislaus	562	469	20%	↑
Sutter	80	80	0%	
Yolo	187	179	4%	↑
Yuba	127	126	1%	↑

## Pended By County

Jul 2025 vs Jul 2024

Amador	64	51	25%	↑
Butte	36	15	140%	↑
Calaveras	58	55	5%	↑
Colusa	8	6	33%	↑
El Dorado	201	199	1%	↑
Merced	120	110	9%	↑
Nevada	128	112	14%	↑
Placer	451	459	-2%	↓
Sacramento	1215	1142	6%	↑
San Joaquin	494	492	0%	
Stanislaus	347	346	0%	
Sutter	64	43	49%	↑
Yolo	151	126	20%	↑
Yuba	85	106	-20%	↓

## Sold By County

Jul 2025 vs Jul 2024

Amador	47	49	-4%	↓
Butte	17	15	13%	↑
Calaveras	49	46	7%	↑
Colusa	8	7	14%	↑
El Dorado	187	191	-2%	↓
Merced	129	102	26%	↑
Nevada	113	136	-17%	↓
Placer	449	480	-6%	↓
Sacramento	1107	1143	-3%	↓
San Joaquin	427	469	-9%	↓
Stanislaus	290	358	-19%	↓
Sutter	46	41	12%	↑
Yolo	111	122	-9%	↓
Yuba	70	86	-19%	↓

Data provided by **MetroList**  
THE TRUE SOURCE

Powered by **TrendGraphix**  
YOUR HOME FOR REAL ESTATE DATA

\*Data represents Residential Property class only.

\*Pended represents the number of properties that went into contract during the course of a calendar month.

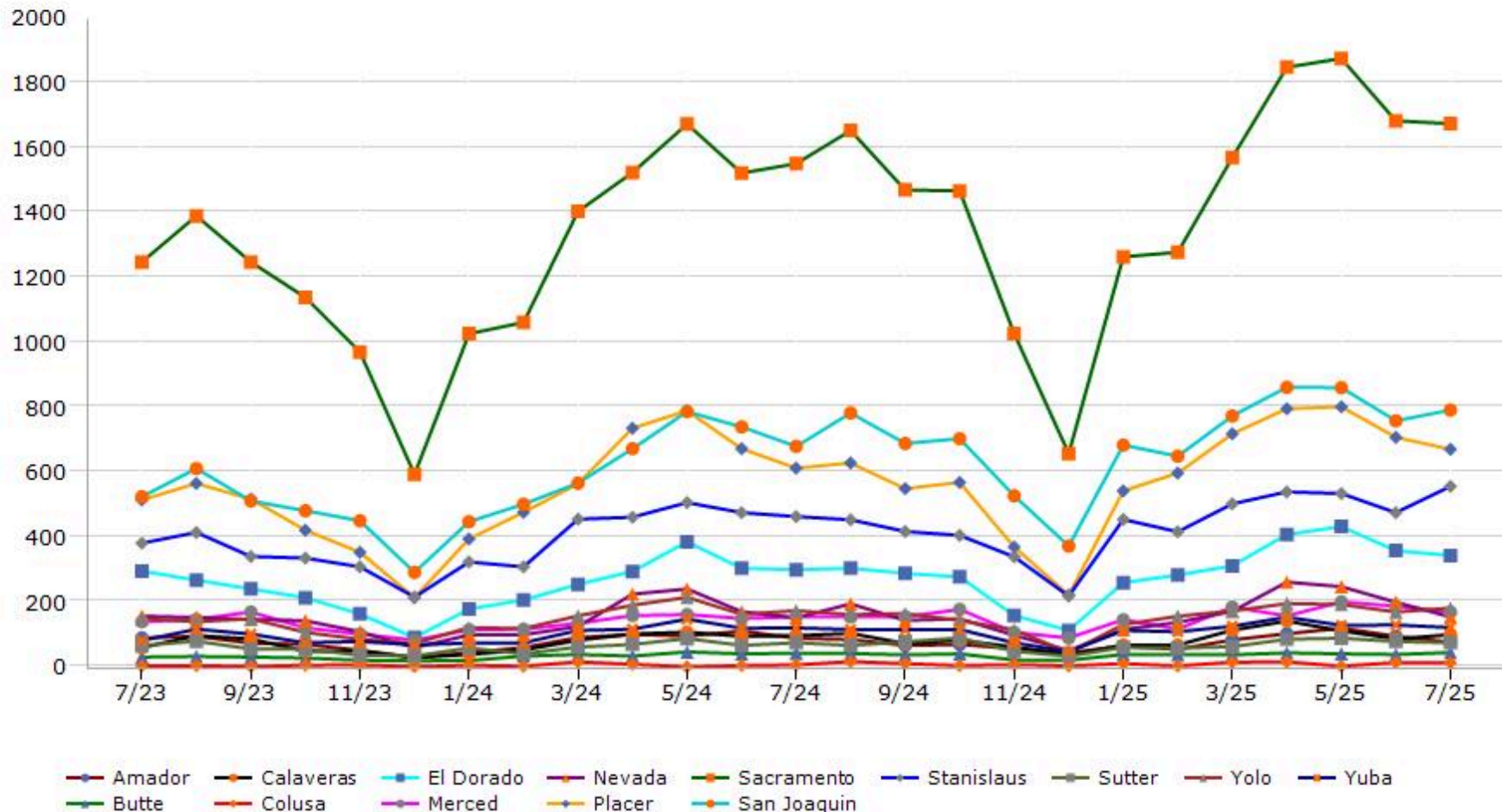
\*Month of Inventory is calculated by dividing the number of homes that went into contract in a given calendar month into the number of homes that were active at the end of a given calendar month.

# Trending Report: Jul 2023 - Jul 2025



CALIFORNIA REAL ESTATE BROKERS, INC.

## New Listing



Data provided by **MetroList**  
THE TRUE SOURCE

Powered by **TrendGraphix**  
YOUR HOME FOR REAL ESTATE DATA

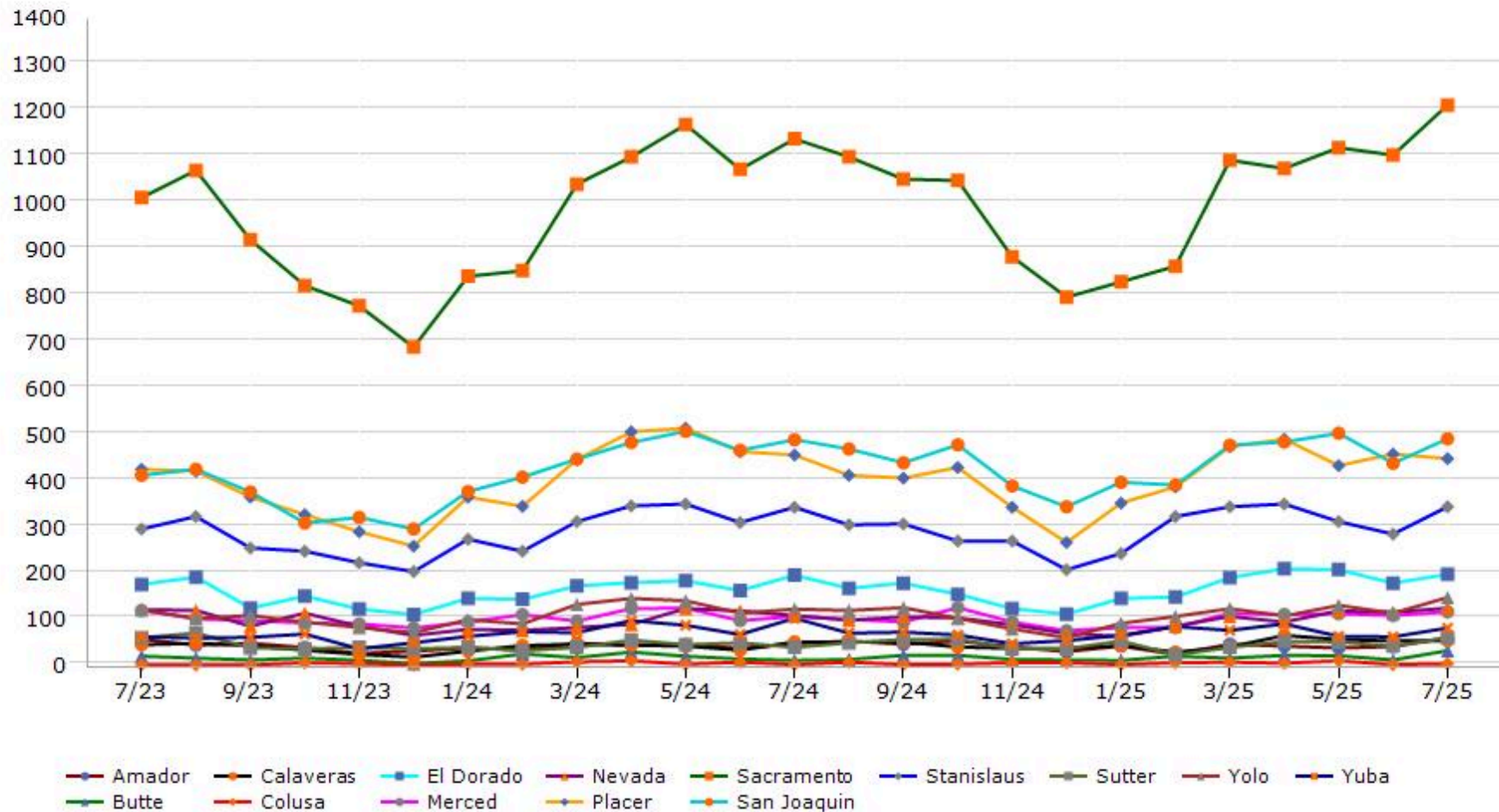
\*Data represents Residential Property class only.

# Trending Report: Jul 2023 - Jul 2025



CALIFORNIA REAL ESTATE BROKERS, INC.

## Pended



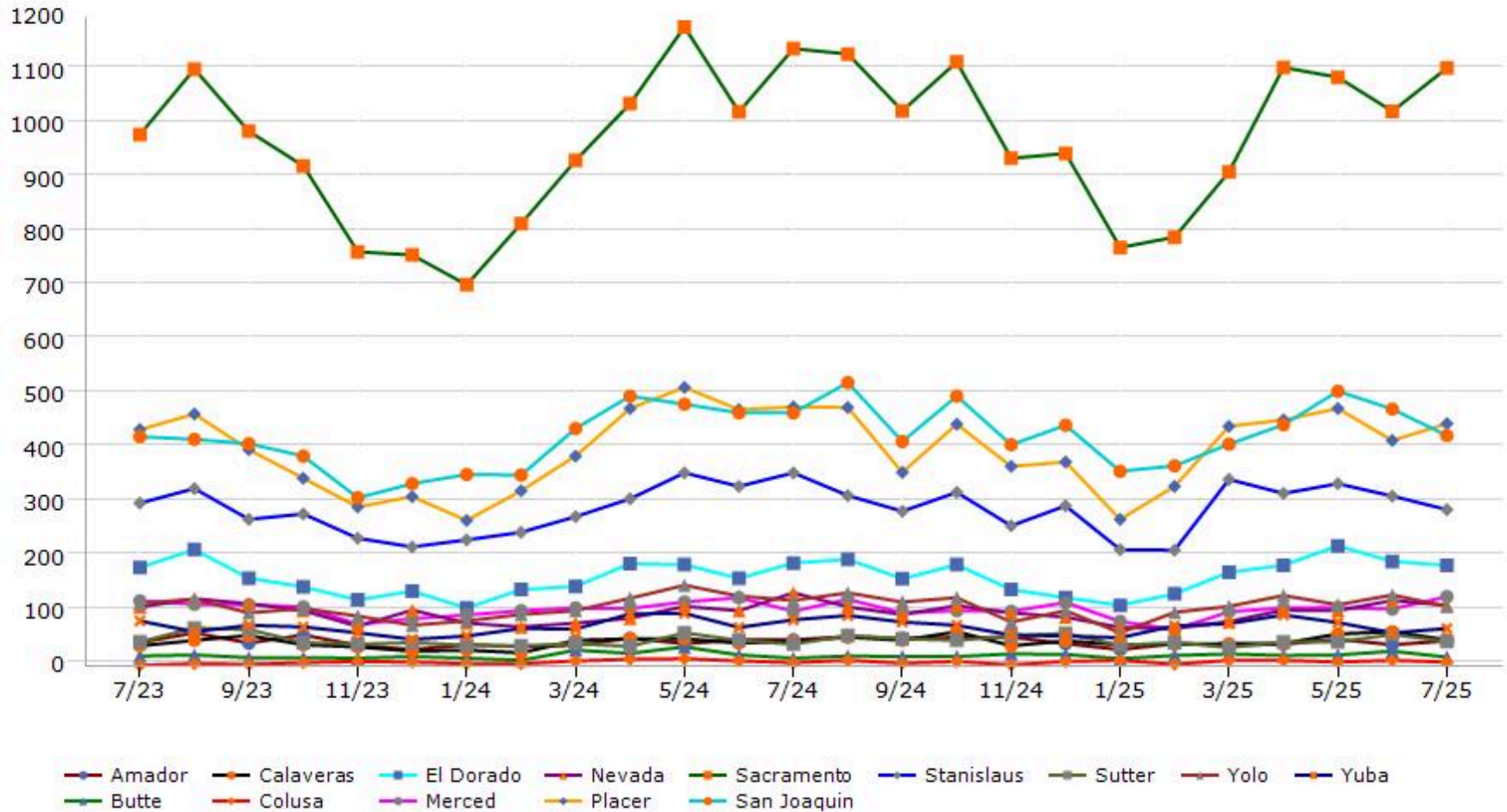
Data provided by **MetroList** THE TRUE SOURCE. Powered by **TrendGraphix** YOUR HOME FOR REAL ESTATE DATA.

\*Data represents Residential Property class only.  
 \*Pended represents the number of properties that went into contract during the course of a calendar month.

# Trending Report: Jul 2023 - Jul 2025



## Sold



Data provided by **MetroList** THE TRUE SOURCE. Powered by **TrendGraphix** YOUR HOME FOR REAL ESTATE DATA.

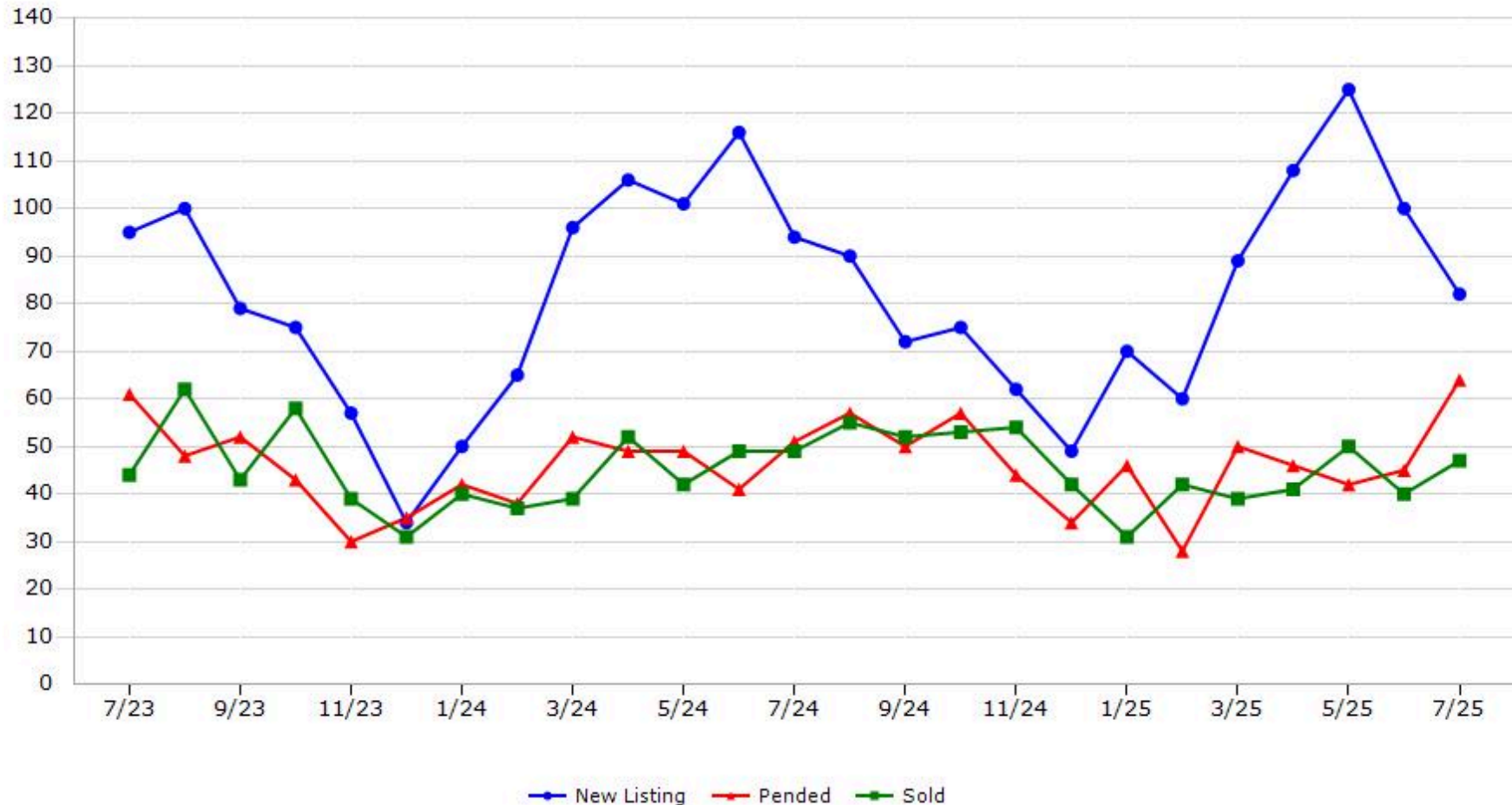
\*Data represents Residential Property class only.

# Trending Report: Jul 2023 - Jul 2025



CALIFORNIA REAL ESTATE BROKERS, INC.

## Amador County



Data provided by **MetroList**® THE TRUE SOURCE Powered by **TrendGraphix** YOUR HOME FOR REAL ESTATE DATA

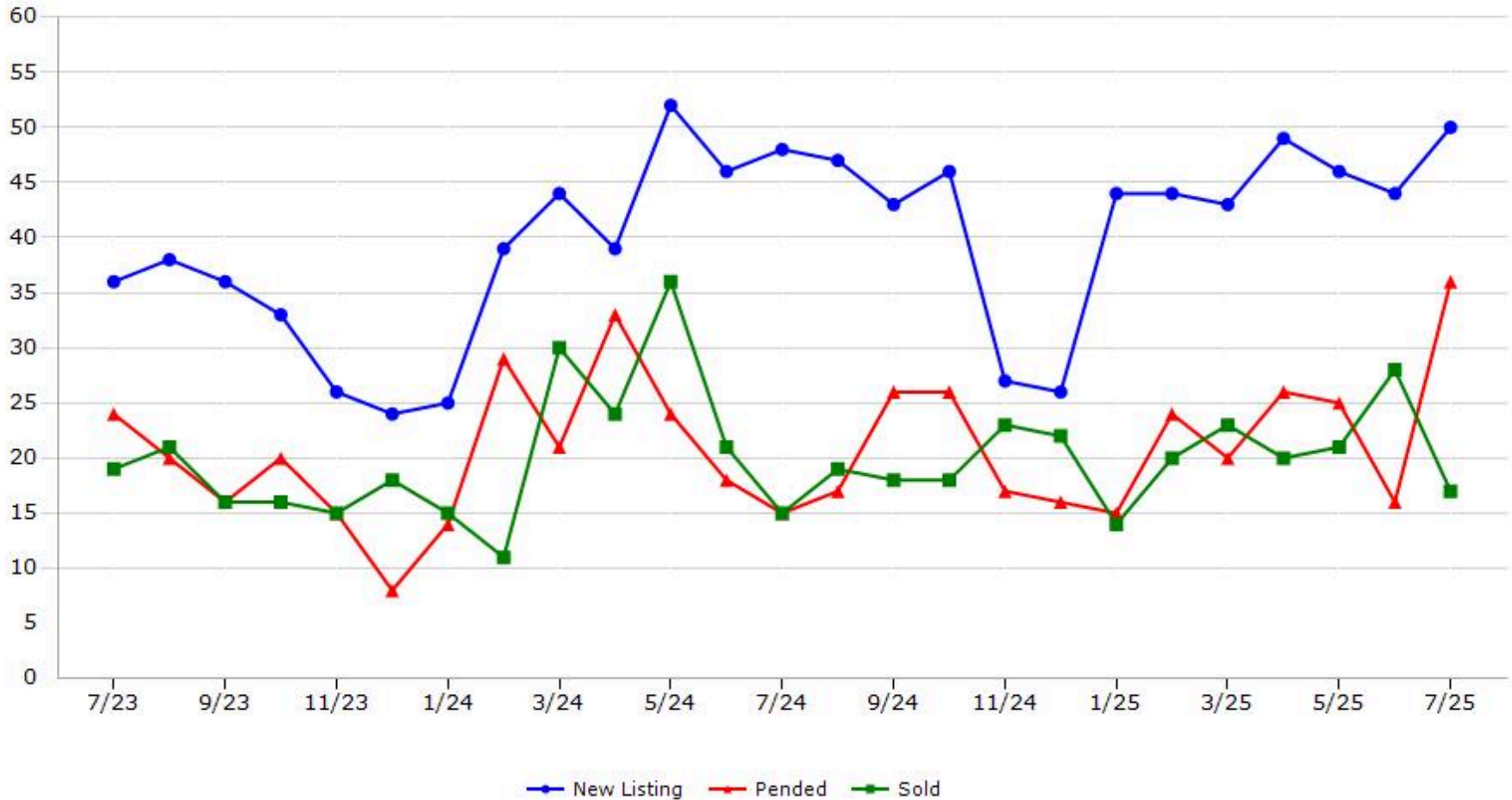
\*Data represents Residential Property class only.

\*Pended represents the number of properties that went into contract during the course of a calendar month.

# Trending Report: Jul 2023 - Jul 2025



## Butte County



Data provided by **MetroList**® THE TRUE SOURCE Powered by **TrendGraphix** YOUR HOME FOR REAL ESTATE DATA

\*Data represents Residential Property class only.

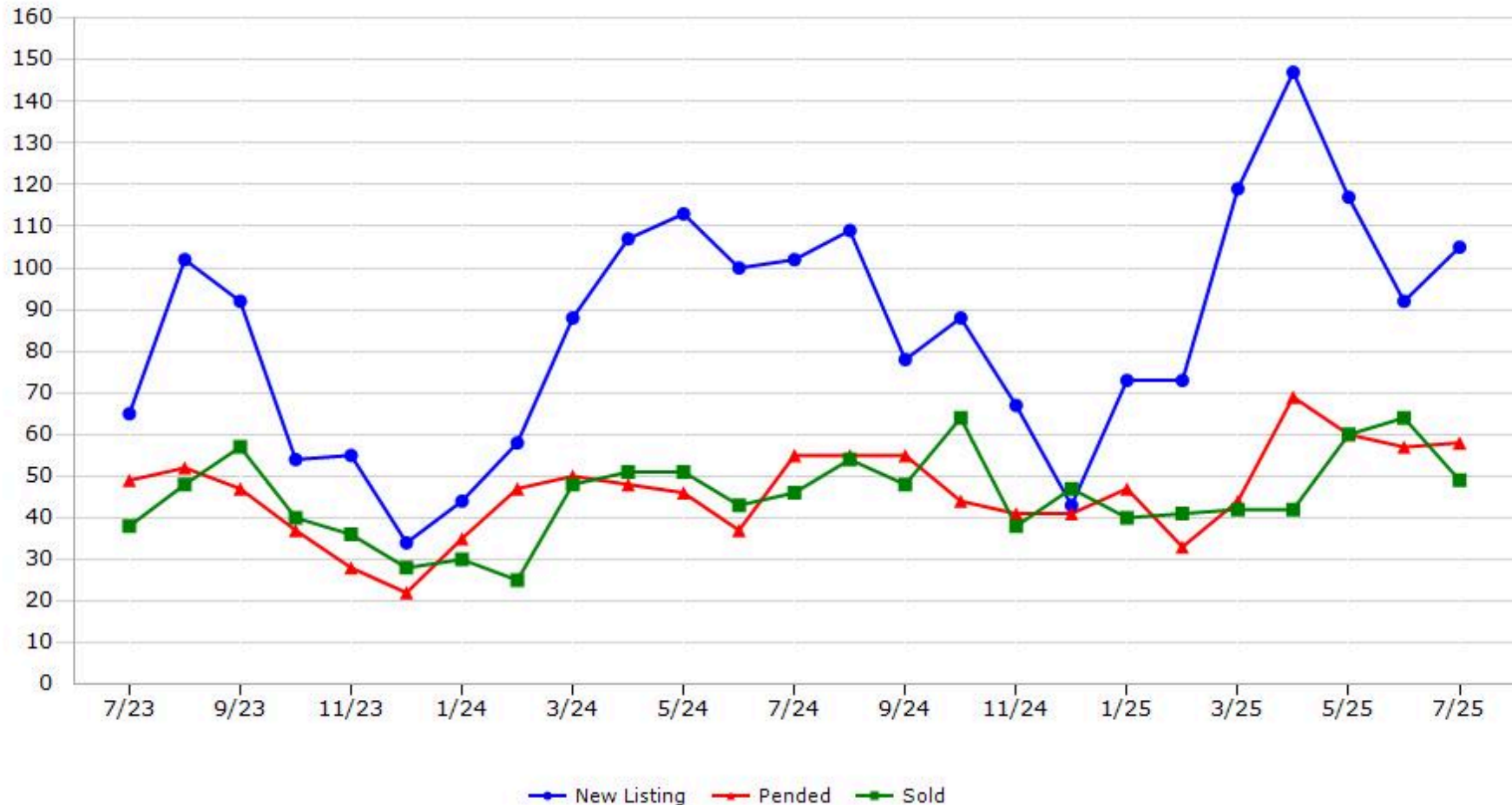
\*Pended represents the number of properties that went into contract during the course of a calendar month.

# Trending Report: Jul 2023 - Jul 2025



CALIFORNIA REAL ESTATE BROKERS, INC.

## Calaveras County



Data provided by **MetroList**® THE TRUE SOURCE Powered by **TrendGraphix** YOUR HOME FOR REAL ESTATE DATA

\*Data represents Residential Property class only.

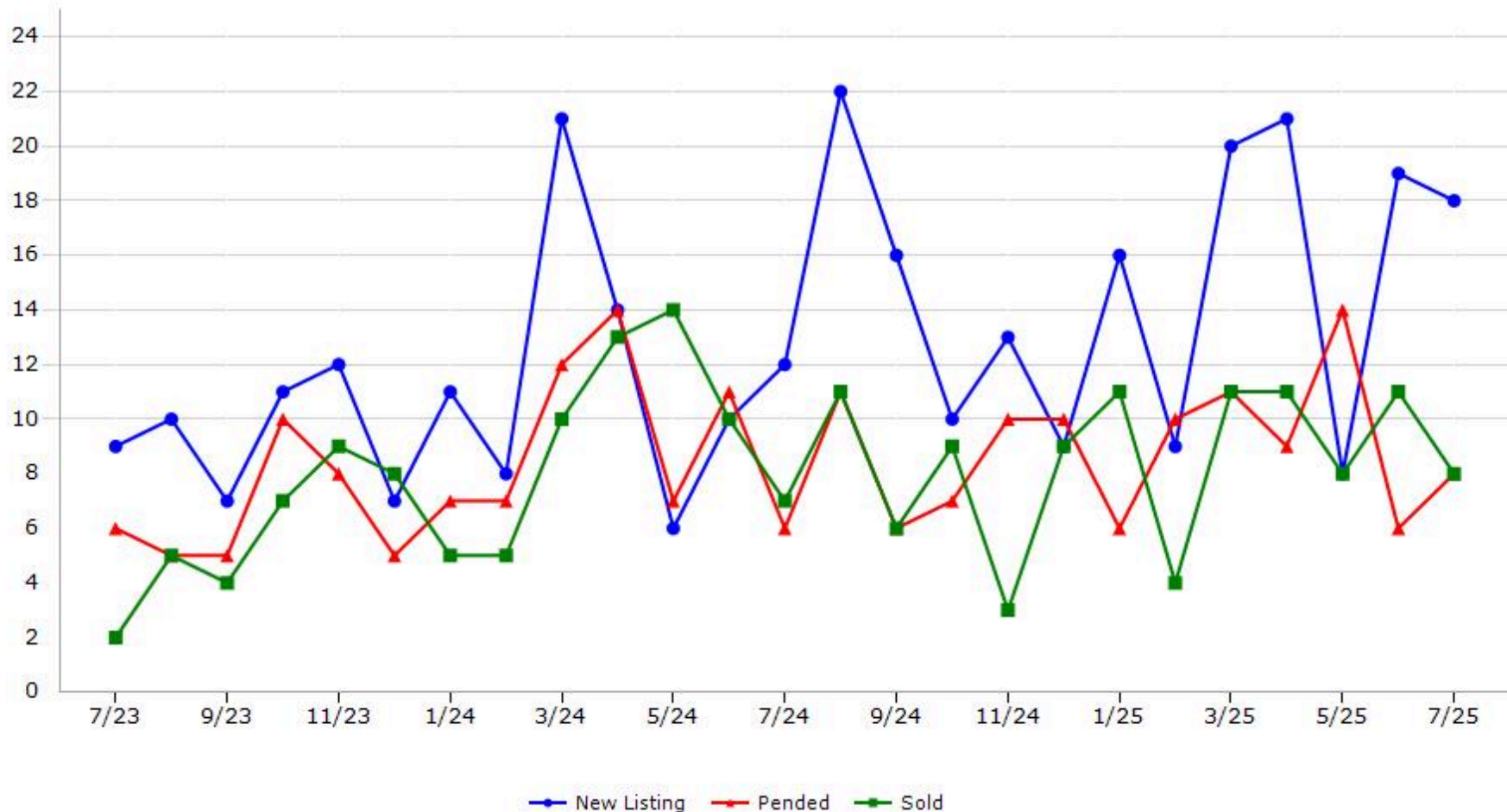
\*Pended represents the number of properties that went into contract during the course of a calendar month.

# Trending Report: Jul 2023 - Jul 2025



CALIFORNIA REAL ESTATE BROKERS, INC.

## Colusa County



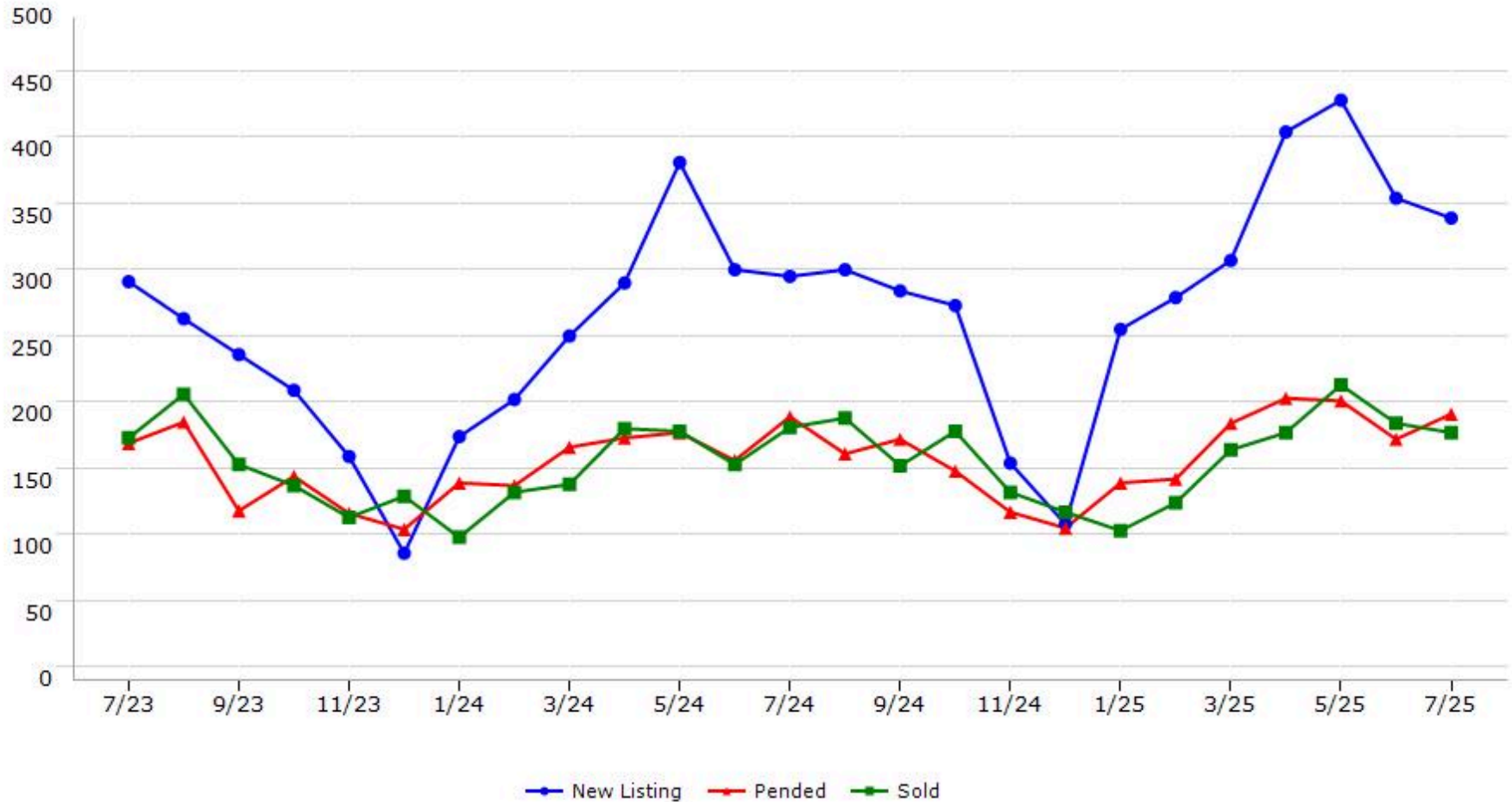
Data provided by **MetroList** THE TRUE SOURCE. Powered by **TrendGraphix** YOUR HOME FOR REAL ESTATE DATA.

\*Data represents Residential Property class only.  
\*Pended represents the number of properties that went into contract during the course of a calendar month.

# Trending Report: Jul 2023 - Jul 2025



## El Dorado County



Data provided by **MetroList** THE TRUE SOURCE Powered by **TrendGraphix** YOUR HOME FOR REAL ESTATE DATA

\*Data represents Residential Property class only.

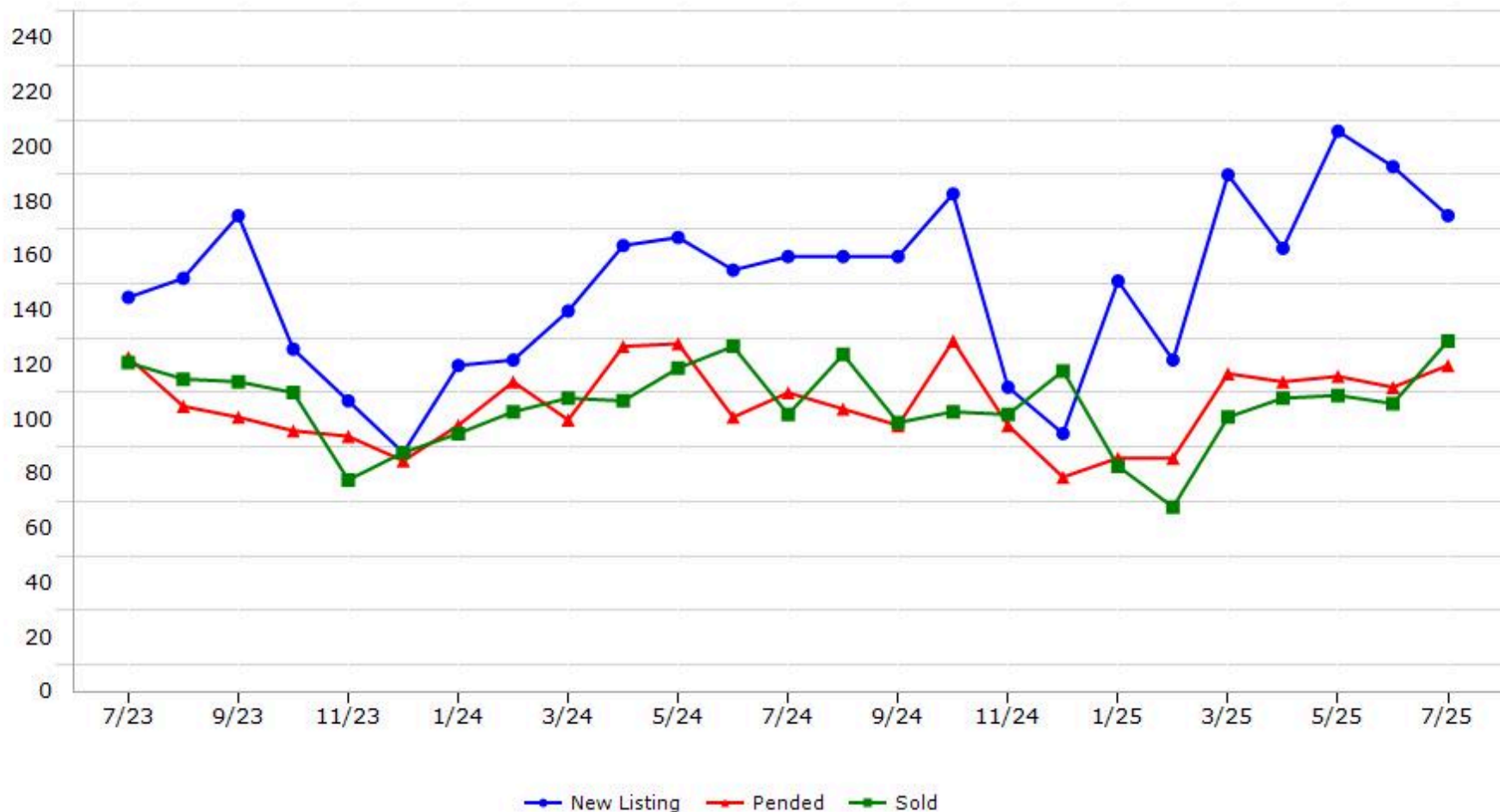
\*Pended represents the number of properties that went into contract during the course of a calendar month.

# Trending Report: Jul 2023 - Jul 2025



CALIFORNIA REAL ESTATE BROKERS, INC.

## Merced County



Data provided by **MetroList** THE TRUE SOURCE. Powered by **TrendGraphix** YOUR HOME FOR REAL ESTATE DATA.

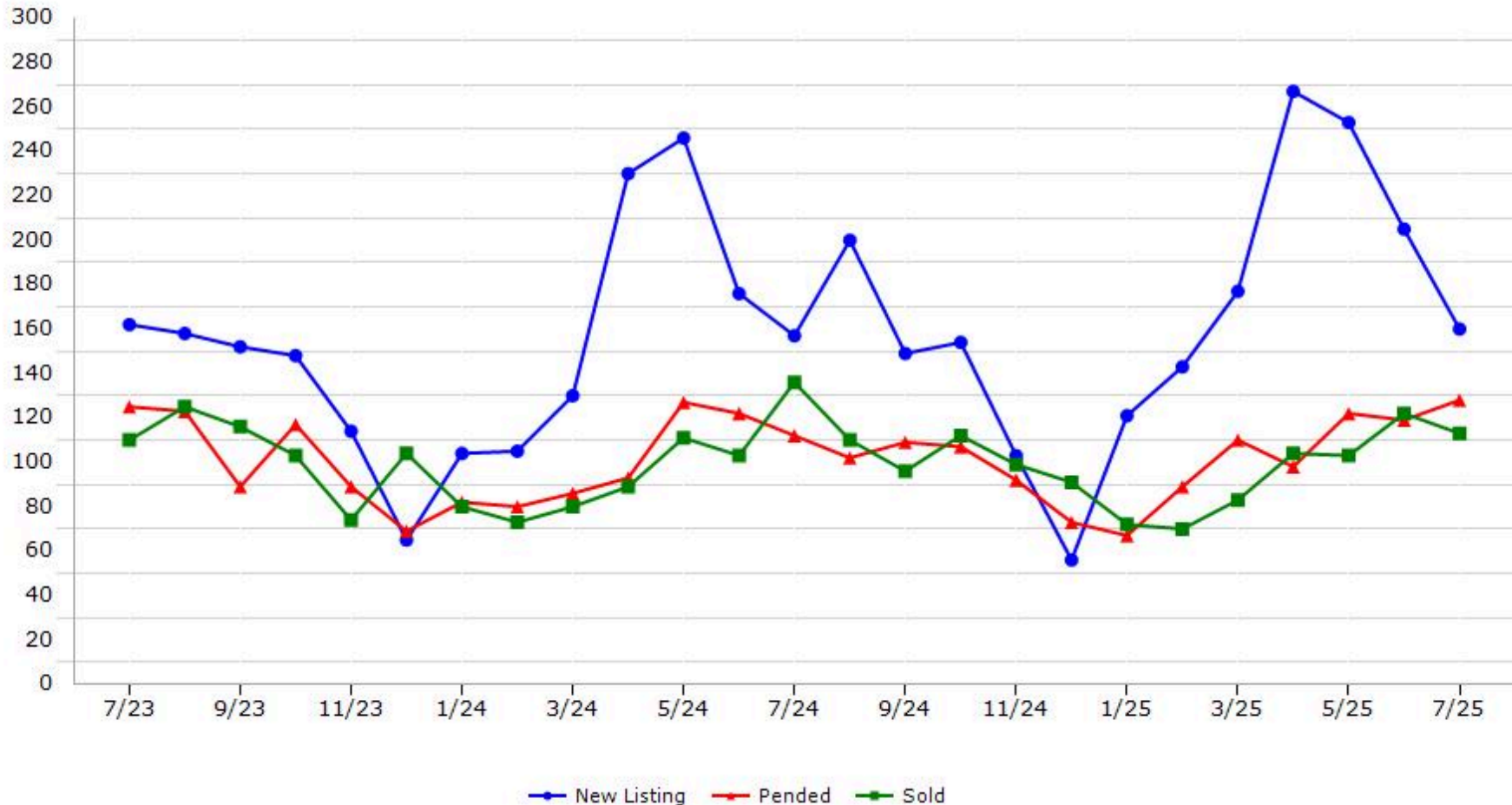
\*Data represents Residential Property class only.  
\*Pended represents the number of properties that went into contract during the course of a calendar month.

# Trending Report: Jul 2023 - Jul 2025



CALIFORNIA REAL ESTATE BROKERS, INC.

## Nevada County



Data provided by **MetroList** THE TRUE SOURCE Powered by **TrendGraphix** YOUR HOME FOR REAL ESTATE DATA

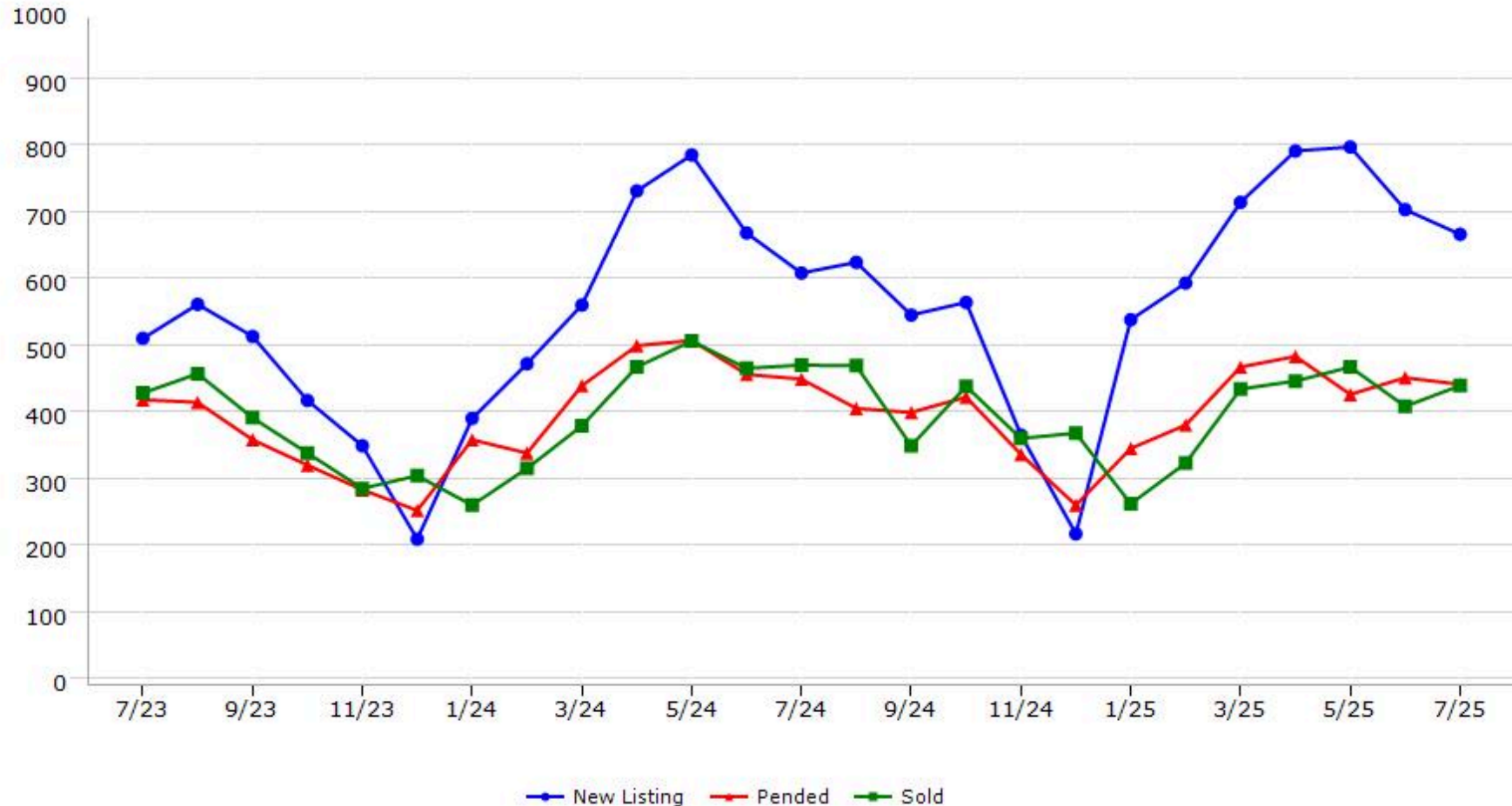
\*Data represents Residential Property class only.  
\*Pended represents the number of properties that went into contract during the course of a calendar month.

# Trending Report: Jul 2023 - Jul 2025



CALIFORNIA REAL ESTATE BROKERS, INC.

## Placer County



Data provided by **MetroList** THE TRUE SOURCE. Powered by **TrendGraphix** YOUR HOME FOR REAL ESTATE DATA.

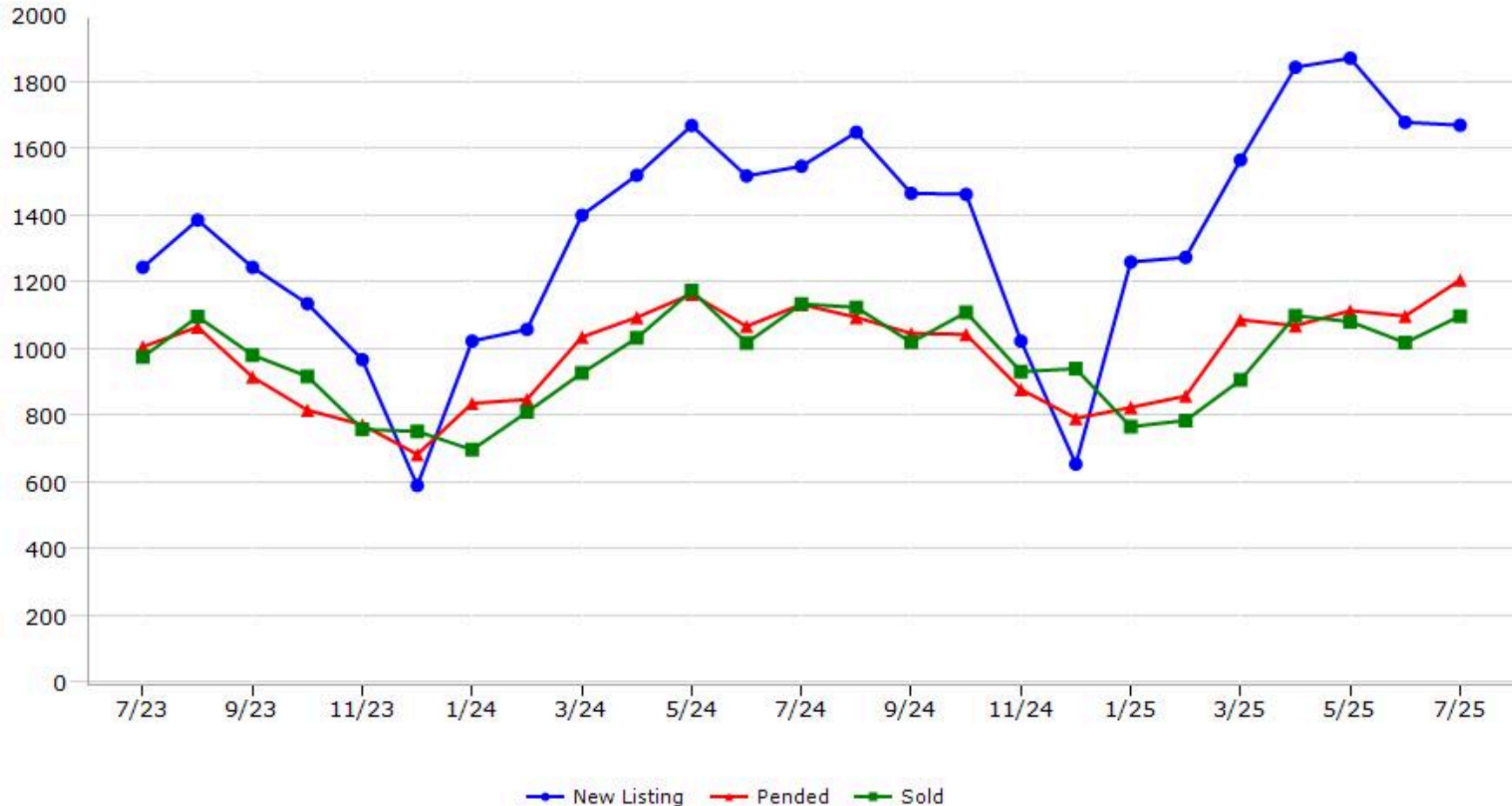
\*Data represents Residential Property class only.  
\*Pended represents the number of properties that went into contract during the course of a calendar month.

# Trending Report: Jul 2023 - Jul 2025



CALIFORNIA REAL ESTATE BROKERS, INC.

## Sacramento County



Data provided by **MetroList** THE TRUE SOURCE. Powered by **TrendGraphix** YOUR HOME FOR REAL ESTATE DATA.

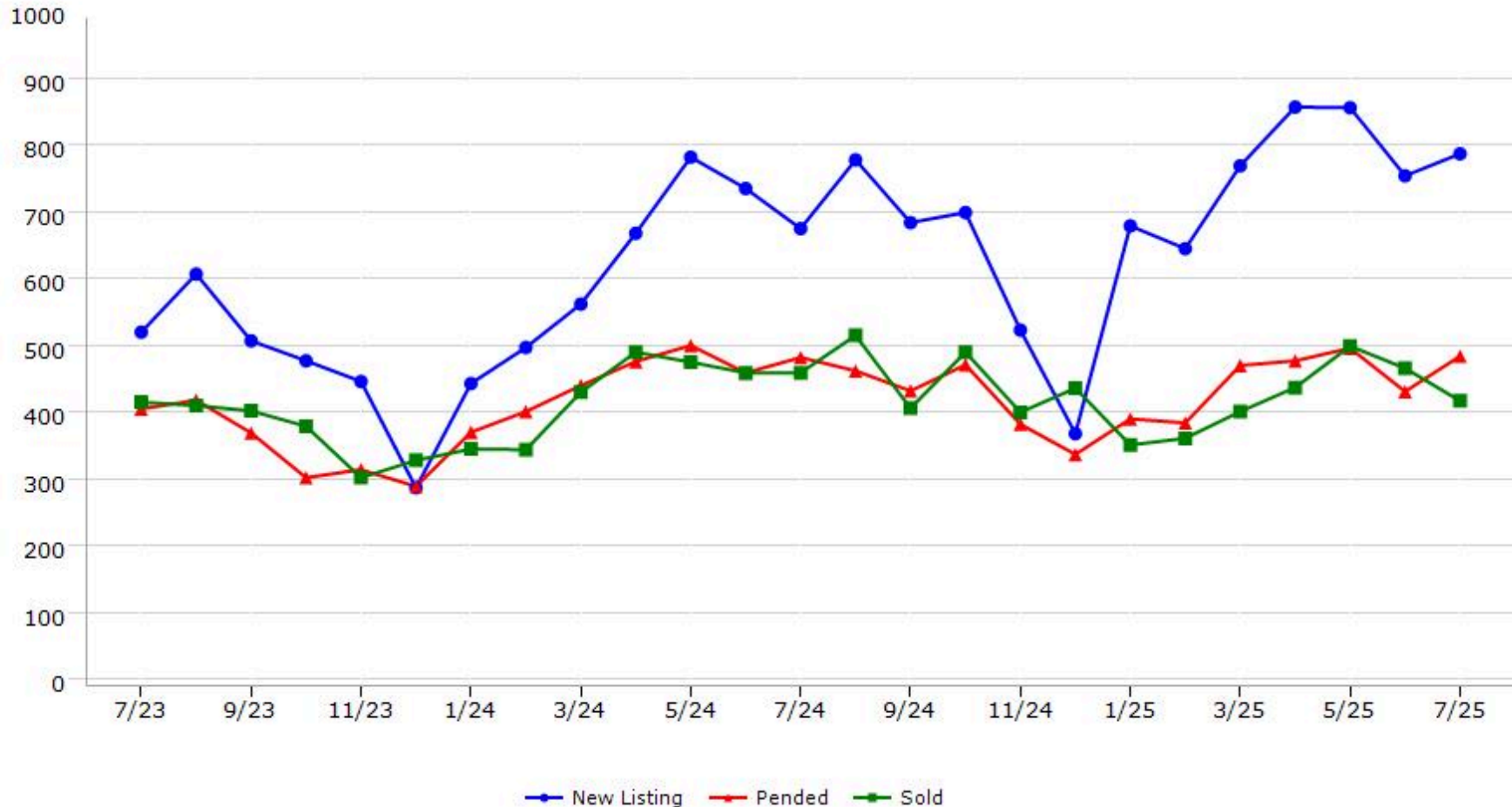
\*Data represents Residential Property class only.  
\*Pended represents the number of properties that went into contract during the course of a calendar month.

# Trending Report: Jul 2023 - Jul 2025



CALIFORNIA REAL ESTATE BROKERS, INC.

## San Joaquin County



Data provided by **MetroList**® THE TRUE SOURCE Powered by **TrendGraphix** YOUR HOME FOR REAL ESTATE DATA

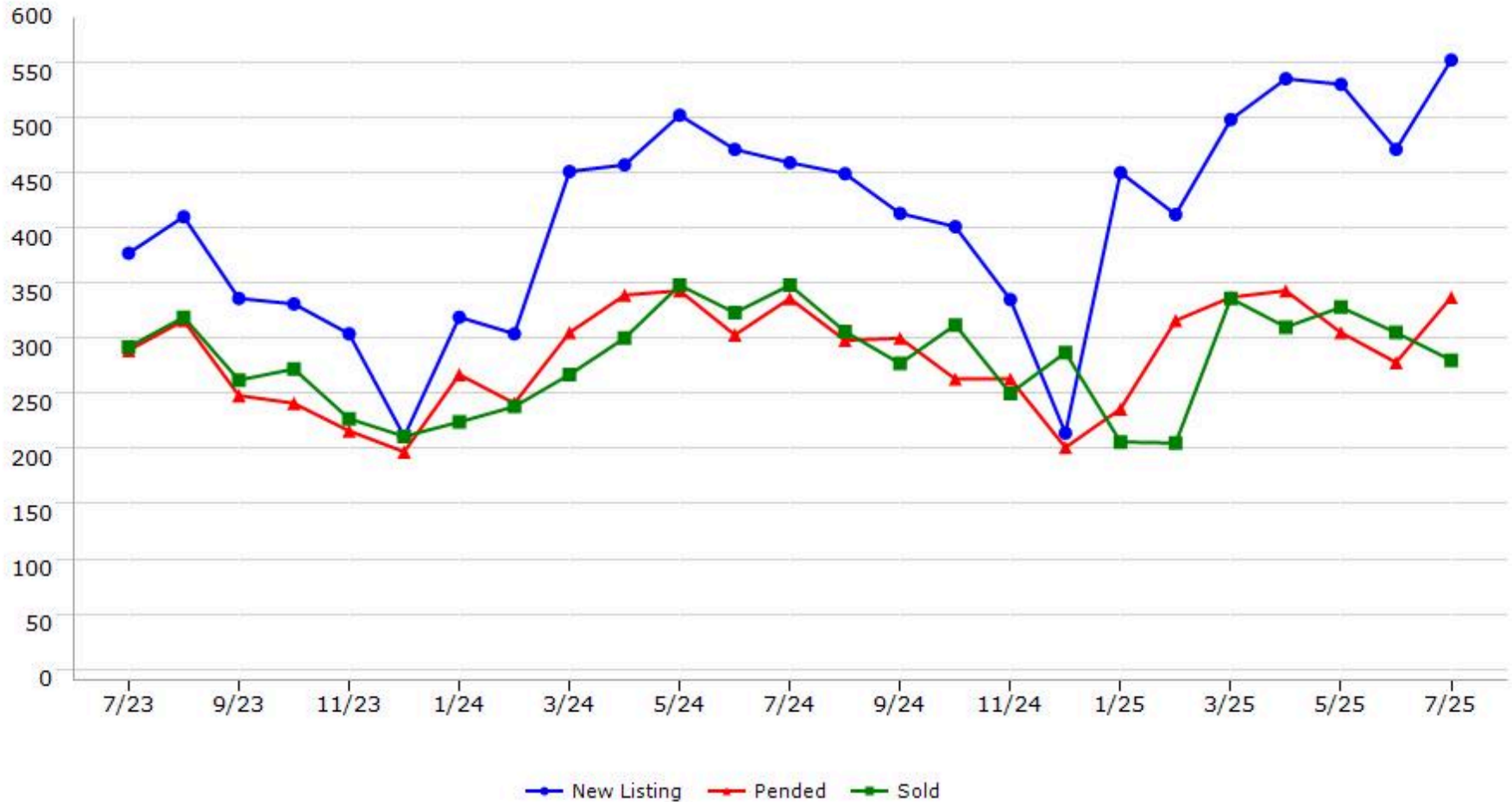
\*Data represents Residential Property class only.

\*Pended represents the number of properties that went into contract during the course of a calendar month.

# Trending Report: Jul 2023 - Jul 2025



## Stanislaus County



Data provided by **MetroList**® THE TRUE SOURCE    Powered by **TrendGraphix** YOUR HOME FOR REAL ESTATE DATA

\*Data represents Residential Property class only.

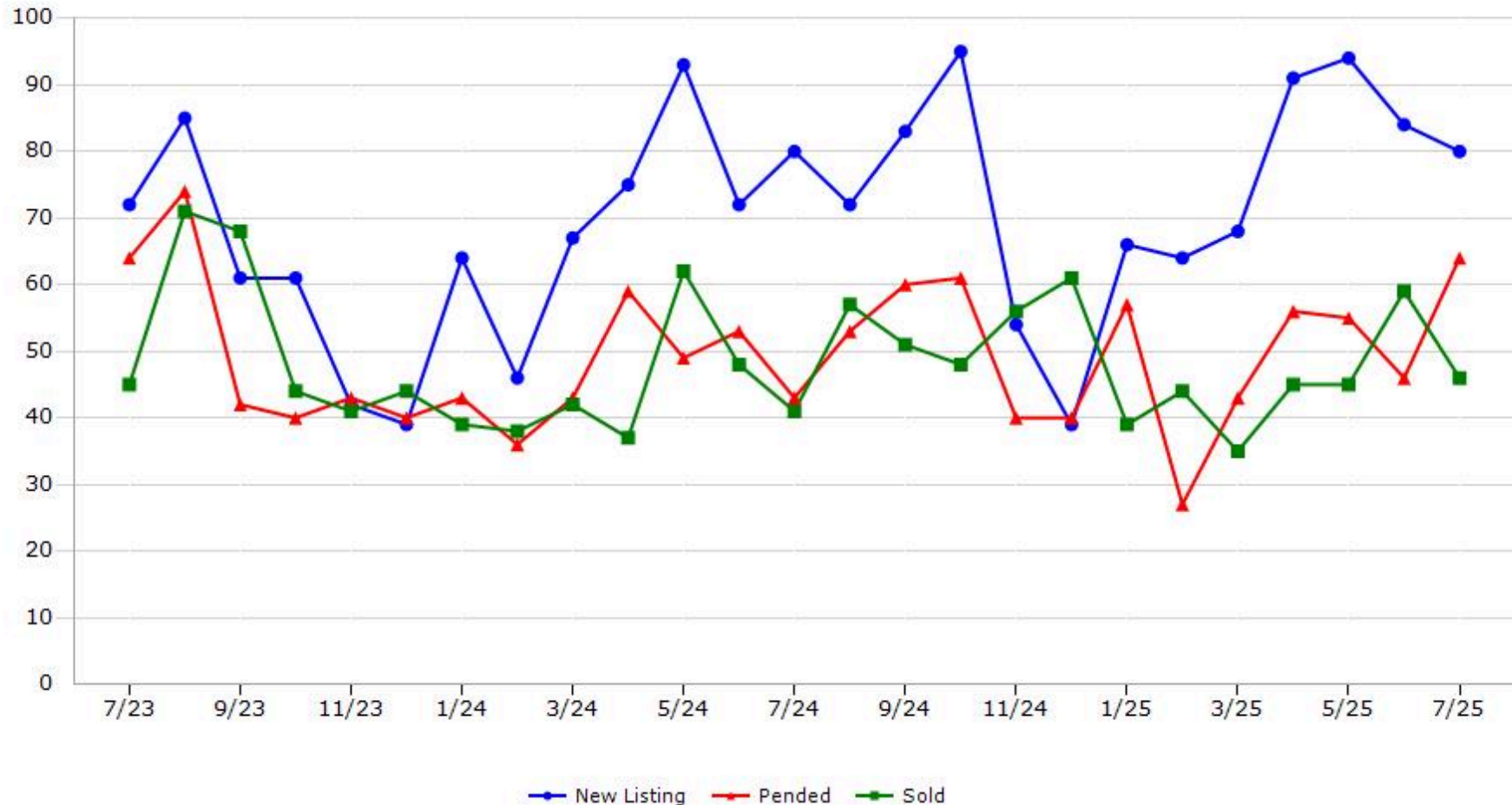
\*Pended represents the number of properties that went into contract during the course of a calendar month.

# Trending Report: Jul 2023 - Jul 2025



CALIFORNIA REAL ESTATE BROKERS, INC.

## Sutter County



Data provided by **MetroList** THE TRUE SOURCE Powered by **TrendGraphix** YOUR HOME FOR REAL ESTATE DATA

\*Data represents Residential Property class only.

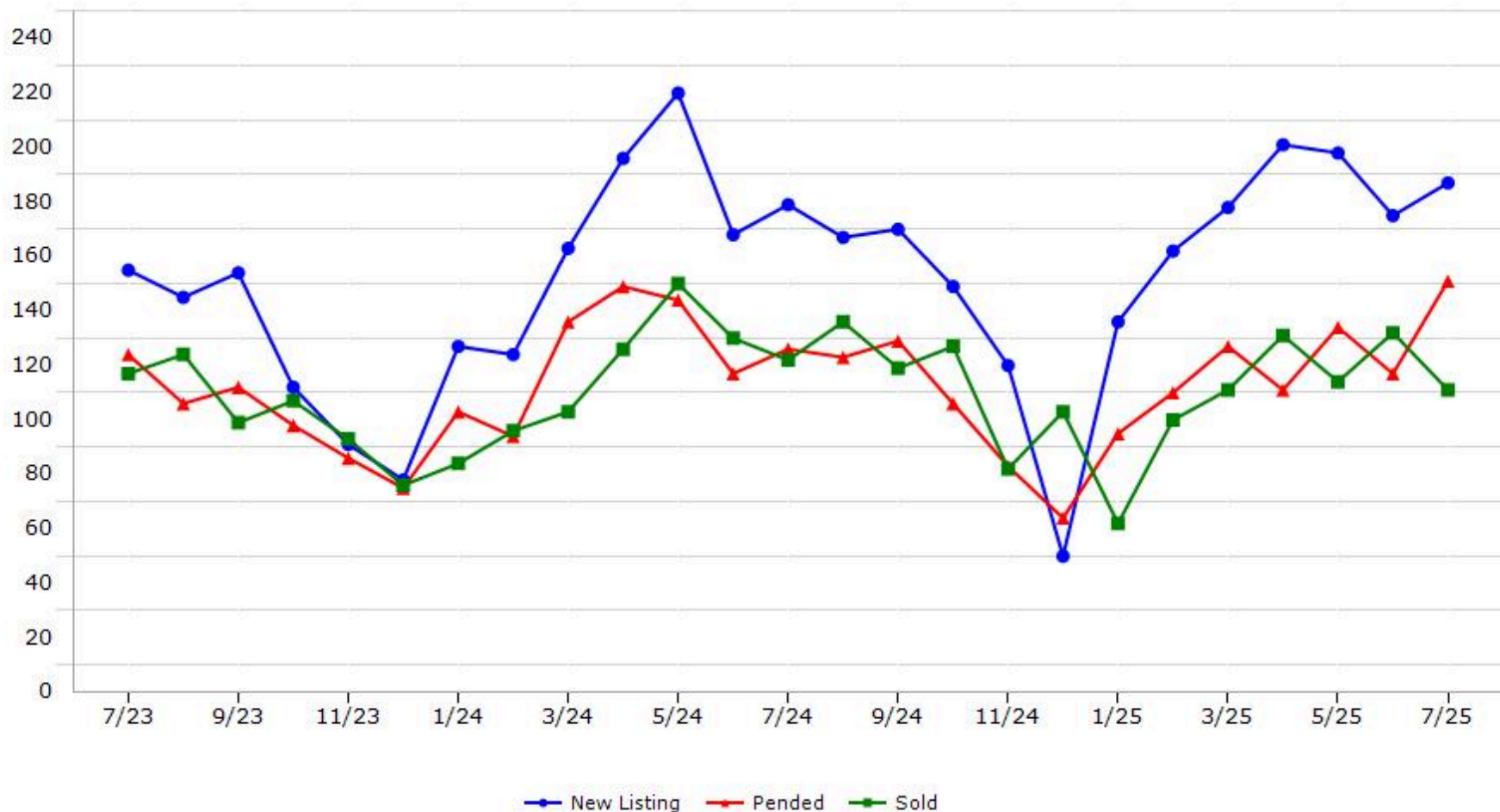
\*Pended represents the number of properties that went into contract during the course of a calendar month.

# Trending Report: Jul 2023 - Jul 2025



CALIFORNIA REAL ESTATE BROKERS, INC.

## Yolo County



Data provided by **MetroList** THE TRUE SOURCE. Powered by **TrendGraphix** YOUR HOME FOR REAL ESTATE DATA.

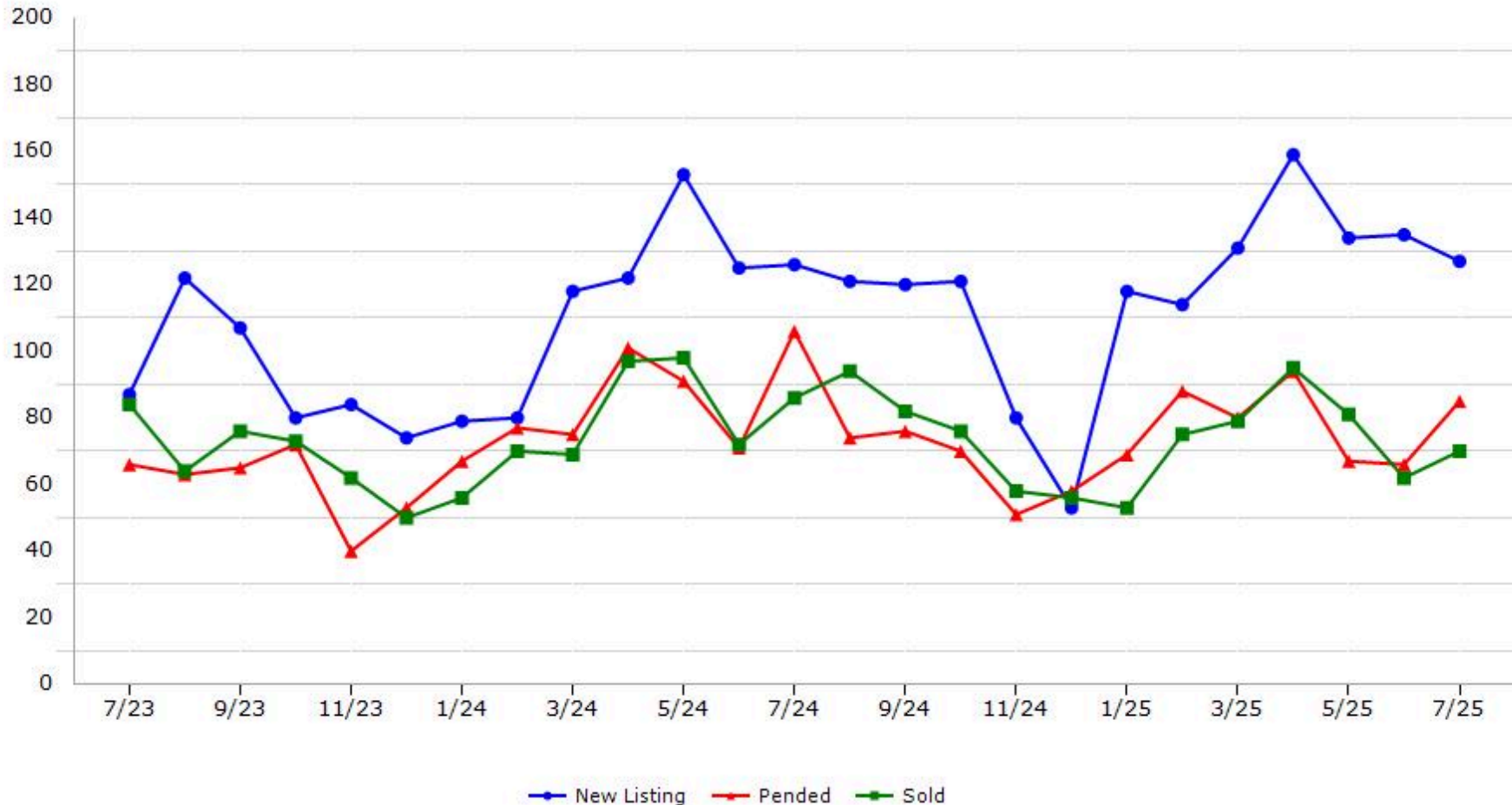
\*Data represents Residential Property class only.  
\*Pended represents the number of properties that went into contract during the course of a calendar month.

# Trending Report: Jul 2023 - Jul 2025



CALIFORNIA REAL ESTATE BROKERS, INC.

## Yuba County



Data provided by **MetroList** THE TRUE SOURCE Powered by **TrendGraphix** YOUR HOME FOR REAL ESTATE DATA

\*Data represents Residential Property class only.

\*Pended represents the number of properties that went into contract during the course of a calendar month.