

Monthly Market Report - December 2025



CALIFORNIA REAL ESTATE BROKERS, INC.

MetroList All Areas

Dec 2025 vs Nov 2025

New Listing

2212 2837 -22% ↓

Pended

2156 2535 -15% ↓

Sold

2750 2568 7% ↑

Avg DOM

55 51 8% ↑

Month of Inventory

3 3.1 -3% ↓

New Listing By County

Dec 2025 vs Nov 2025

Amador	34	60	-43%	↓
Butte	29	30	-3%	↓
Calaveras	37	53	-30%	↓
Colusa	4	10	-60%	↓
El Dorado	103	165	-38%	↓
Merced	92	115	-20%	↓
Nevada	56	96	-42%	↓
Placer	280	366	-23%	↓
Sacramento	715	931	-23%	↓
San Joaquin	420	498	-16%	↓
Stanislaus	271	343	-21%	↓
Sutter	53	36	47%	↑
Yolo	68	82	-17%	↓
Yuba	50	53	-6%	↓

Pended By County

Dec 2025 vs Nov 2025

Amador	28	45	-38%	↓
Butte	14	22	-36%	↓
Calaveras	32	41	-22%	↓
Colusa	4	6	-33%	↓
El Dorado	122	143	-15%	↓
Merced	85	93	-9%	↓
Nevada	80	77	4%	↑
Placer	305	343	-11%	↓
Sacramento	770	882	-13%	↓
San Joaquin	332	407	-18%	↓
Stanislaus	232	266	-13%	↓
Sutter	29	48	-40%	↓
Yolo	74	98	-24%	↓
Yuba	49	64	-23%	↓

Sold By County

Dec 2025 vs Nov 2025

Amador	51	30	70%	↑
Butte	25	14	79%	↑
Calaveras	48	44	9%	↑
Colusa	6	7	-14%	↓
El Dorado	168	132	27%	↑
Merced	97	118	-18%	↓
Nevada	86	101	-15%	↓
Placer	389	360	8%	↑
Sacramento	916	874	5%	↑
San Joaquin	438	407	8%	↑
Stanislaus	298	274	9%	↑
Sutter	50	40	25%	↑
Yolo	112	90	24%	↑
Yuba	67	78	-14%	↓

Data provided by **MetroList**
THE TRUE SOURCE

Powered by **TrendGraphix**
YOUR HOME FOR REAL ESTATE DATA

*Data represents Residential Property class only.

*Pended represents the number of properties that went into contract during the course of a calendar month.

*Month of Inventory is calculated by dividing the number of homes that went into contract in a given calendar month into the number of homes that were active at the end of a given calendar month.

Monthly Market Report - December 2025 vs December 2024



CALIFORNIA REAL ESTATE BROKERS, INC.

MetroList All Areas

Dec 2025 vs Dec 2024

New Listing

2212 2030 9% ↑

Pended

2156 2158 0%

Sold

2750 2746 0%

Avg DOM

55 44 25% ↑

Month of Inventory

3 2.7 11% ↑

New Listing By County

Dec 2025 vs Dec 2024

Amador	34	49	-31%	↓
Butte	29	26	12%	↑
Calaveras	37	43	-14%	↓
Colusa	4	9	-56%	↓
El Dorado	103	118	-13%	↓
Merced	92	95	-3%	↓
Nevada	56	56	0%	
Placer	280	227	23%	↑
Sacramento	715	663	8%	↑
San Joaquin	420	378	11%	↑
Stanislaus	271	224	21%	↑
Sutter	53	39	36%	↑
Yolo	68	50	36%	↑
Yuba	50	53	-6%	↓

Pended By County

Dec 2025 vs Dec 2024

Amador	28	34	-18%	↓
Butte	14	16	-12%	↓
Calaveras	32	41	-22%	↓
Colusa	4	10	-60%	↓
El Dorado	122	115	6%	↑
Merced	85	79	8%	↑
Nevada	80	73	10%	↑
Placer	305	270	13%	↑
Sacramento	770	800	-4%	↓
San Joaquin	332	347	-4%	↓
Stanislaus	232	211	10%	↑
Sutter	29	40	-28%	↓
Yolo	74	64	16%	↑
Yuba	49	58	-16%	↓

Sold By County

Dec 2025 vs Dec 2024

Amador	51	42	21%	↑
Butte	25	22	14%	↑
Calaveras	48	47	2%	↑
Colusa	6	9	-33%	↓
El Dorado	168	127	32%	↑
Merced	97	118	-18%	↓
Nevada	86	91	-5%	↓
Placer	389	378	3%	↑
Sacramento	916	949	-3%	↓
San Joaquin	438	446	-2%	↓
Stanislaus	298	297	0%	
Sutter	50	61	-18%	↓
Yolo	112	103	9%	↑
Yuba	67	56	20%	↑

Data provided by **MetroList**[®]
THE TRUE SOURCE

Powered by **TrendGraphix**
YOUR HOME FOR REAL ESTATE DATA

*Data represents Residential Property class only.

*Pended represents the number of properties that went into contract during the course of a calendar month.

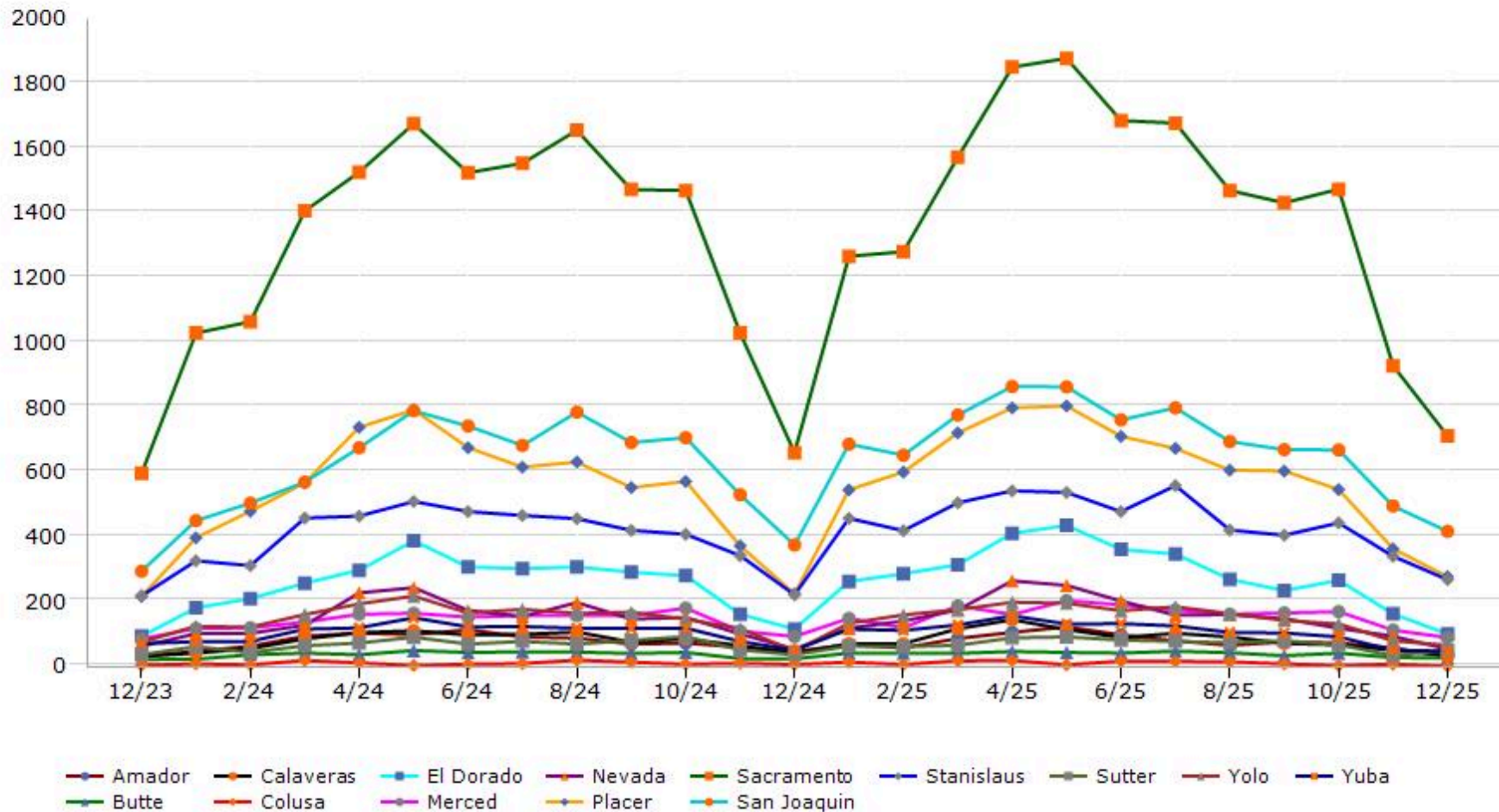
*Month of Inventory is calculated by dividing the number of homes that went into contract in a given calendar month into the number of homes that were active at the end of a given calendar month.

Trending Report: Dec 2023 - Dec 2025



CALIFORNIA REAL ESTATE BROKERS, INC.

New Listing



Data provided by **MetroList**
THE TRUE SOURCE

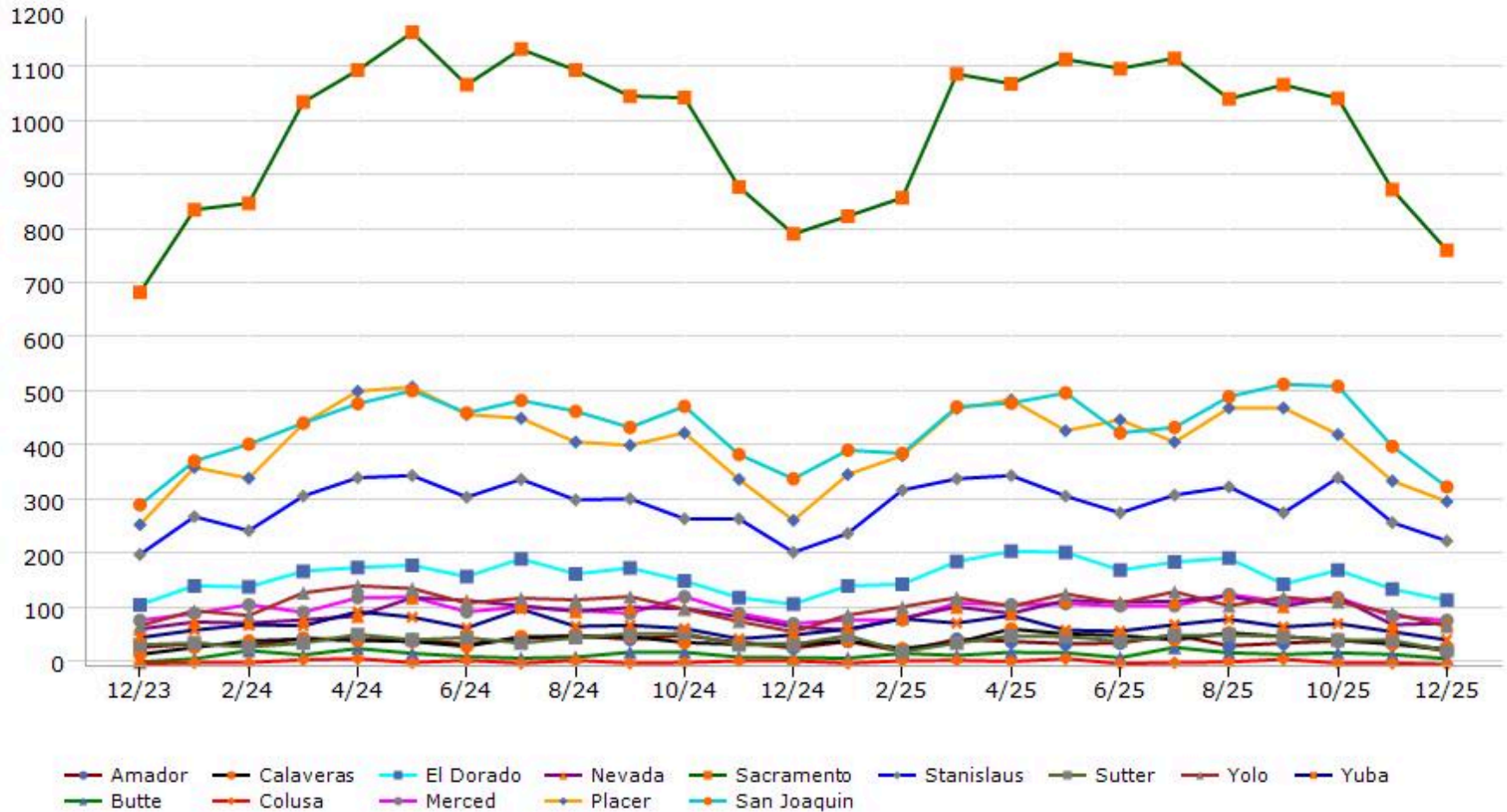
Powered by **TrendGraphix**
YOUR HOME FOR REAL ESTATE DATA

*Data represents Residential Property class only.

Trending Report: Dec 2023 - Dec 2025



Pended



Data provided by **MetroList** THE TRUE SOURCE. Powered by **TrendGraphix** YOUR HOME FOR REAL ESTATE DATA.

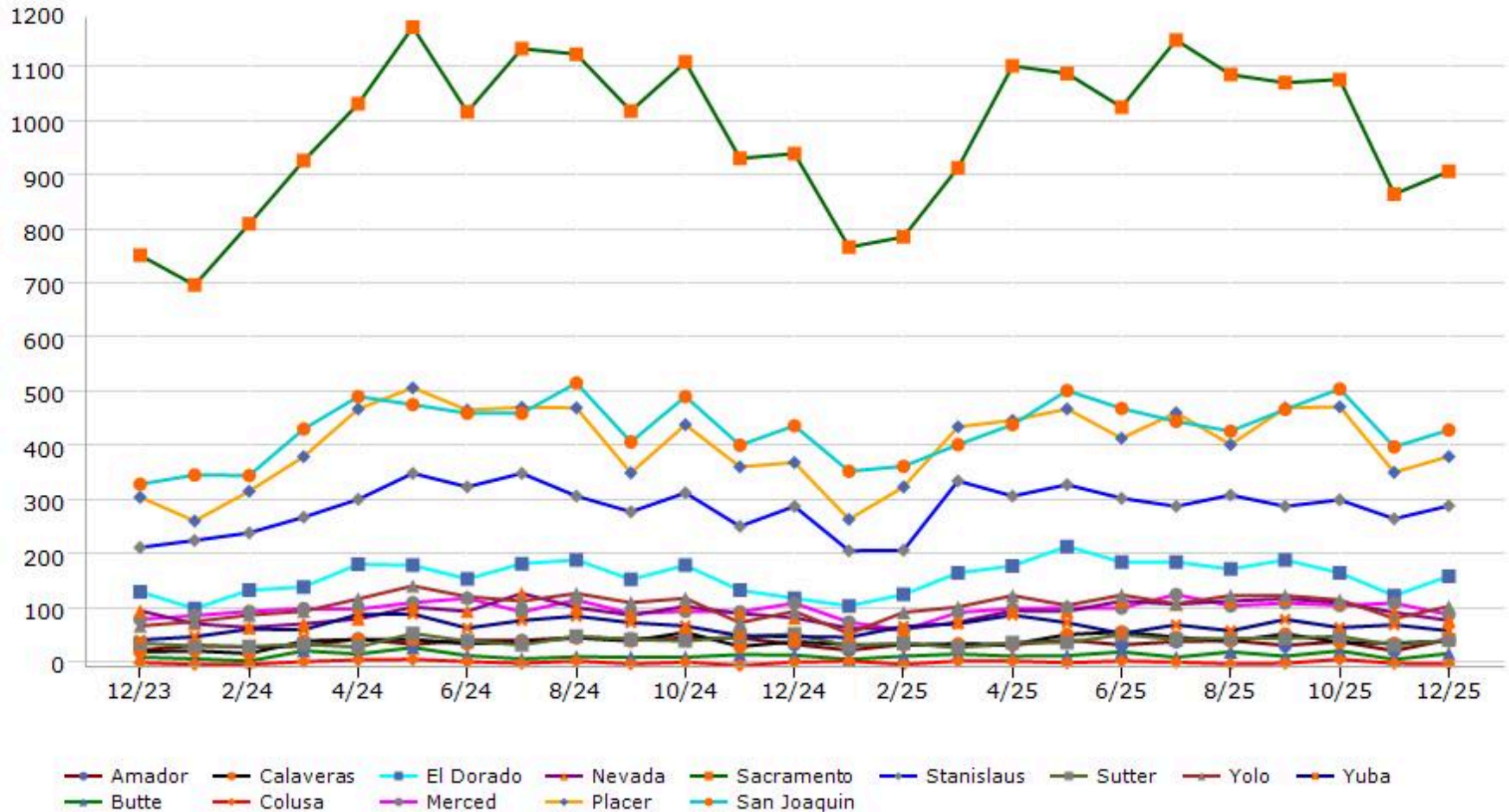
*Data represents Residential Property class only.
 *Pended represents the number of properties that went into contract during the course of a calendar month.

Trending Report: Dec 2023 - Dec 2025



CALIFORNIA REAL ESTATE BROKERS, INC.

Sold



Data provided by **MetroList**
THE TRUE SOURCE

Powered by **TrendGraphix**
YOUR HOME FOR REAL ESTATE DATA

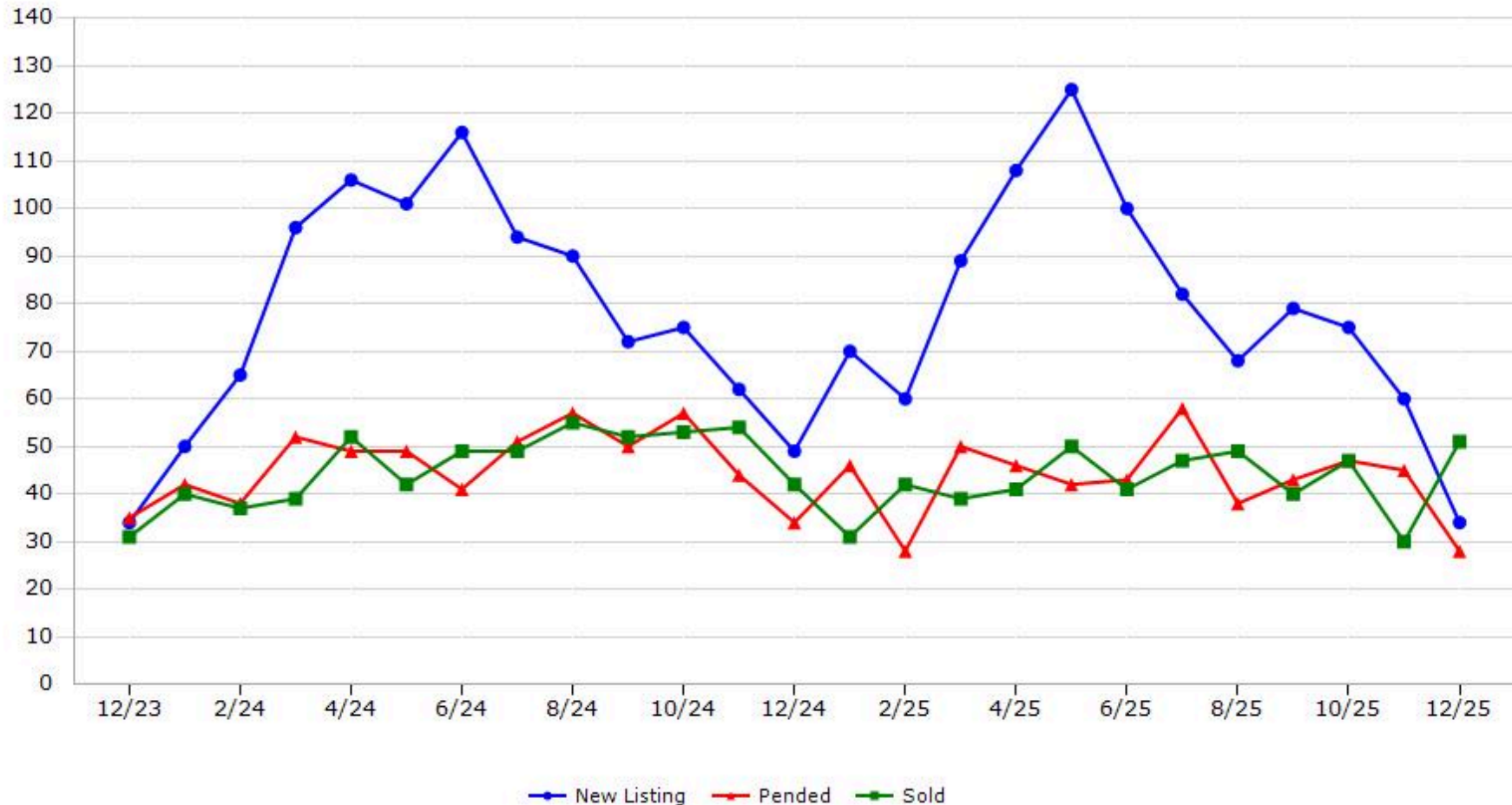
*Data represents Residential Property class only.

Trending Report: Dec 2023 - Dec 2025



CALIFORNIA REAL ESTATE BROKERS, INC.

Amador County



Data provided by **MetroList**® THE TRUE SOURCE Powered by **TrendGraphix** YOUR HOME FOR REAL ESTATE DATA

*Data represents Residential Property class only.

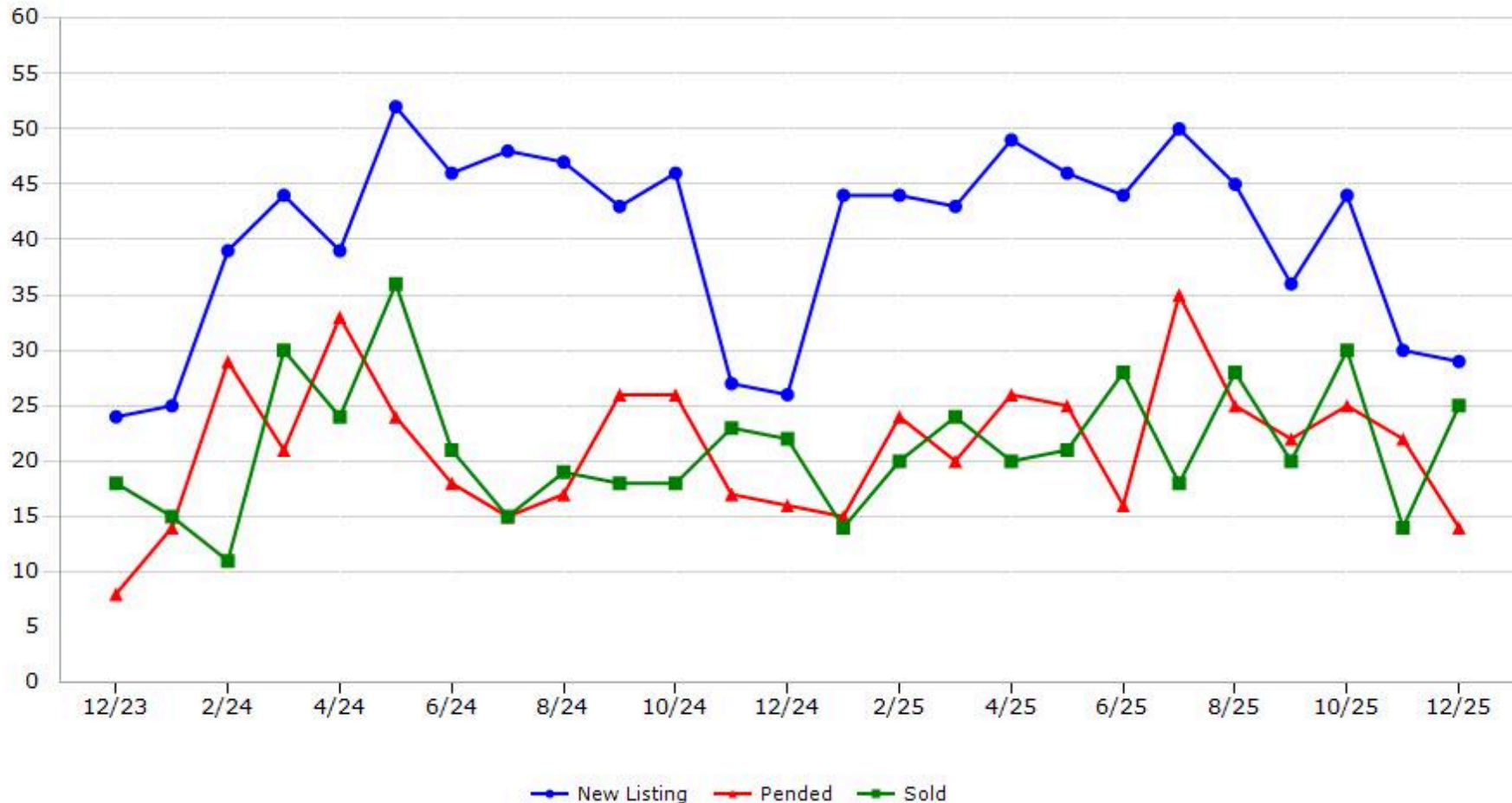
*Pended represents the number of properties that went into contract during the course of a calendar month.

Trending Report: Dec 2023 - Dec 2025



CALIFORNIA REAL ESTATE BROKERS, INC.

Butte County



Data provided by **MetroList** THE TRUE SOURCE Powered by **TrendGraphix** YOUR HOME FOR REAL ESTATE DATA

*Data represents Residential Property class only.

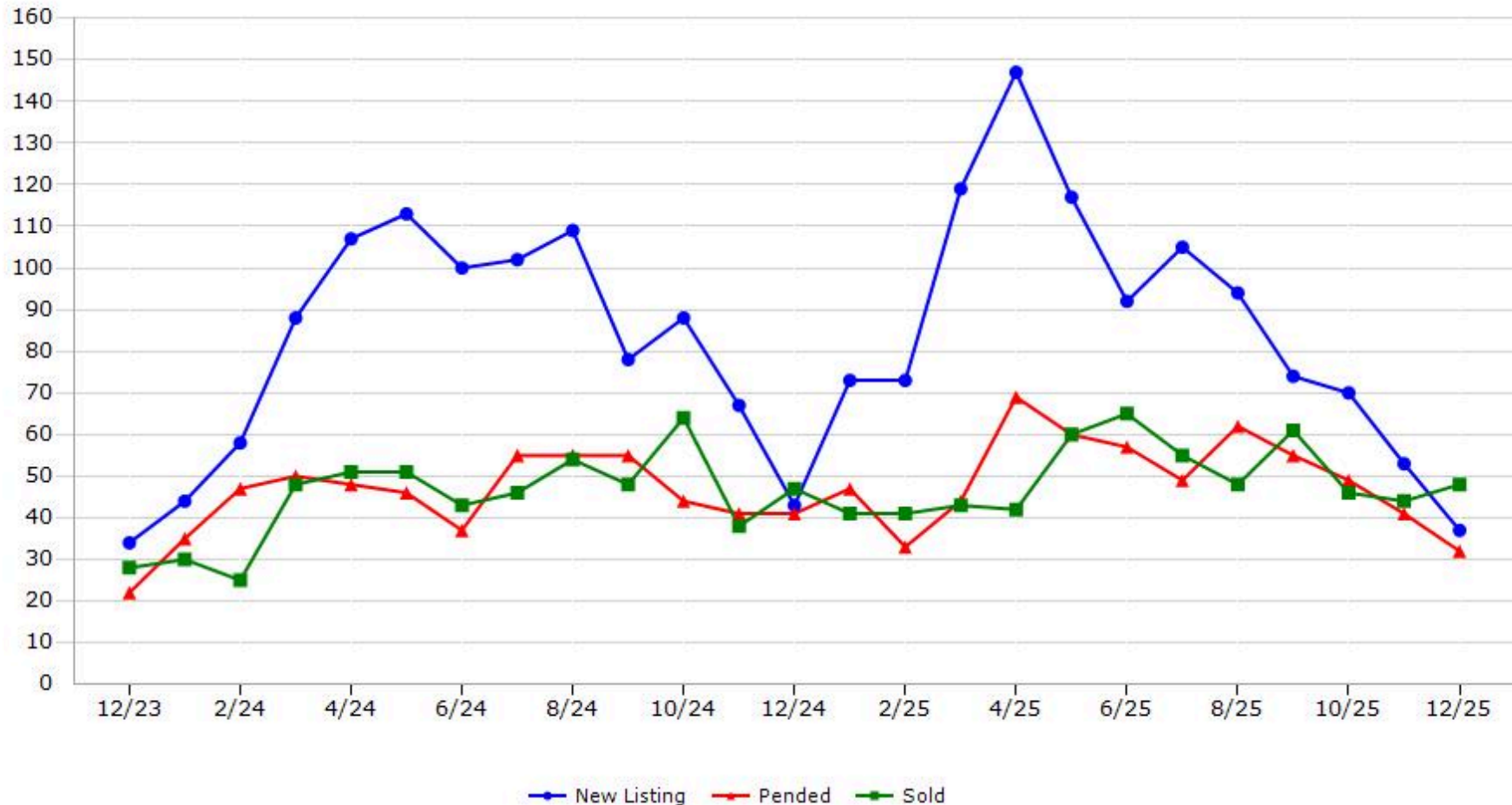
*Pended represents the number of properties that went into contract during the course of a calendar month.

Trending Report: Dec 2023 - Dec 2025



CALIFORNIA REAL ESTATE BROKERS, INC.

Calaveras County



Data provided by **MetroList**® THE TRUE SOURCE Powered by **TrendGraphix** YOUR HOME FOR REAL ESTATE DATA

*Data represents Residential Property class only.

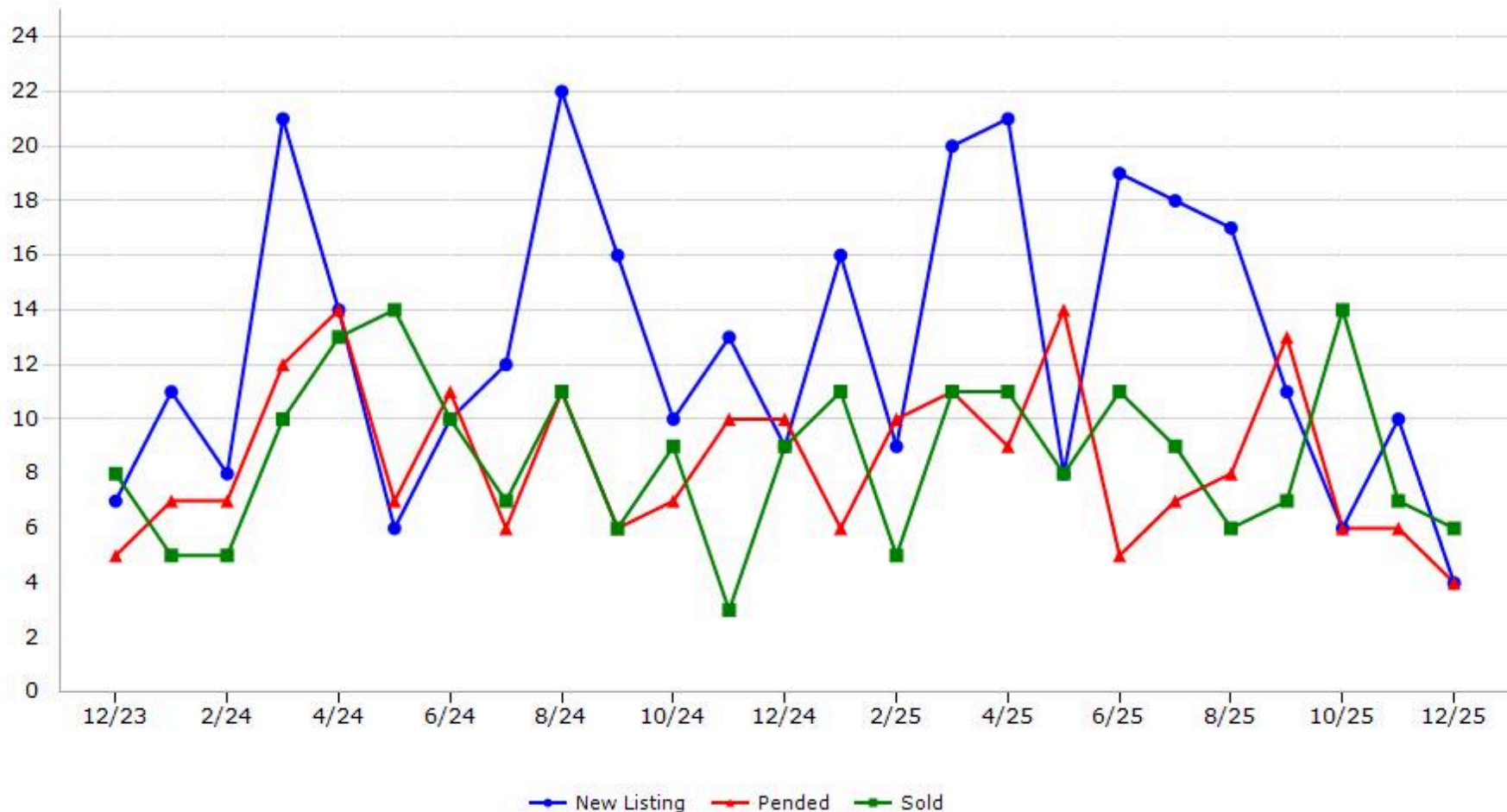
*Pended represents the number of properties that went into contract during the course of a calendar month.

Trending Report: Dec 2023 - Dec 2025



CALIFORNIA REAL ESTATE BROKERS, INC.

Colusa County



Data provided by **MetroList** THE TRUE SOURCE. Powered by **TrendGraphix** YOUR HOME FOR REAL ESTATE DATA.

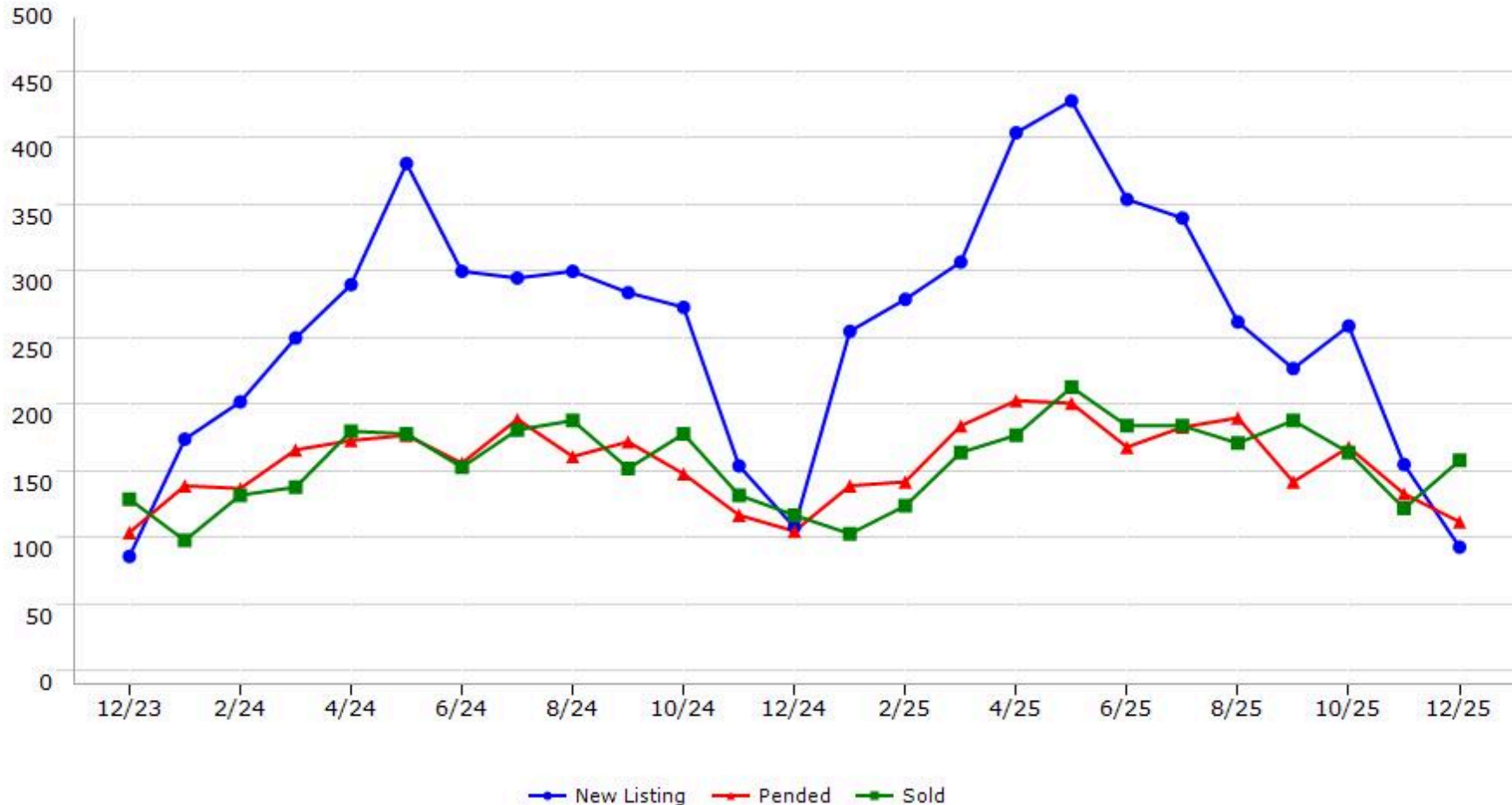
*Data represents Residential Property class only.
*Pended represents the number of properties that went into contract during the course of a calendar month.

Trending Report: Dec 2023 - Dec 2025



CALIFORNIA REAL ESTATE BROKERS, INC.

El Dorado County



Data provided by **MetroList** THE TRUE SOURCE. Powered by **TrendGraphix** YOUR HOME FOR REAL ESTATE DATA.

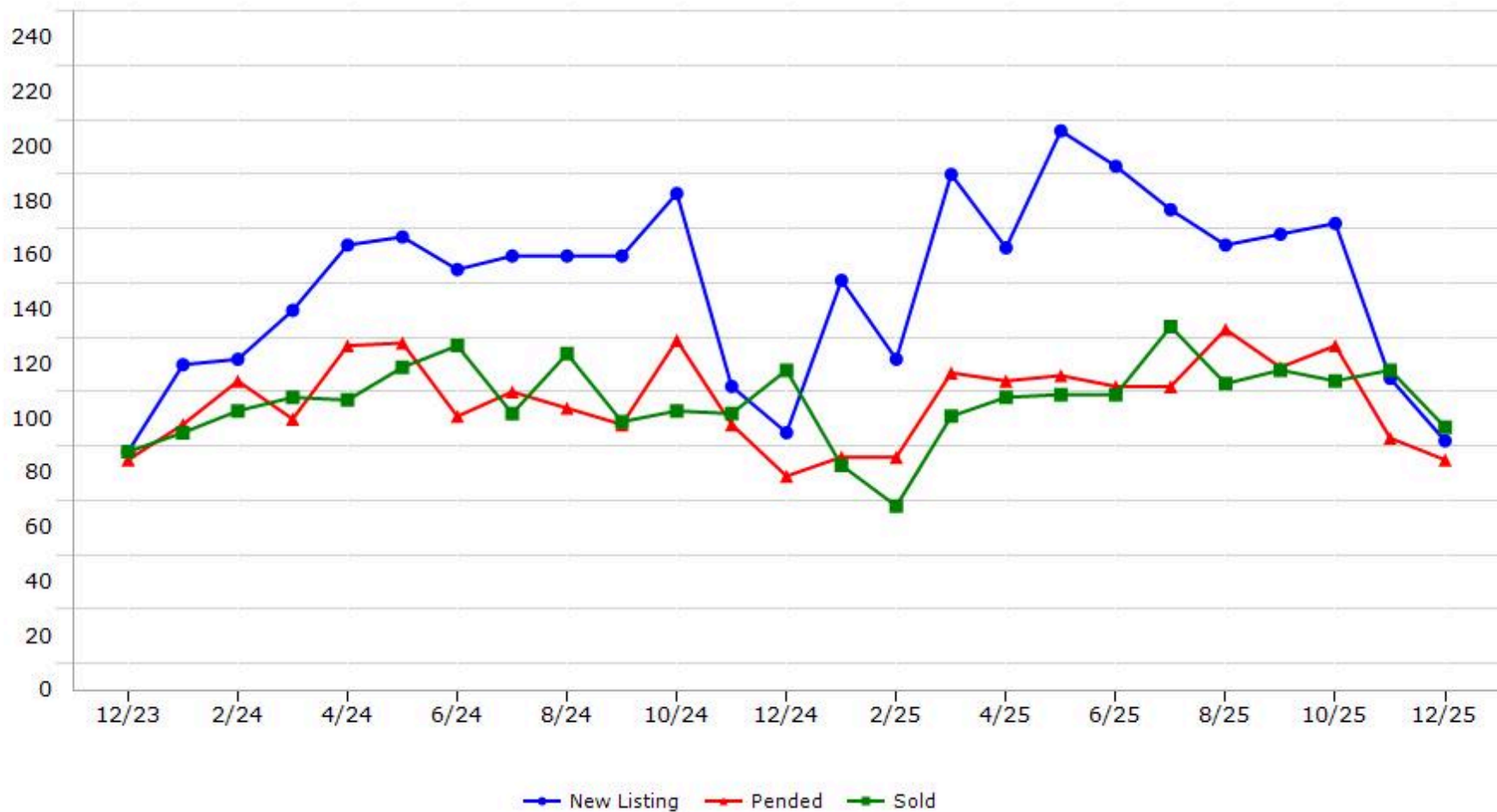
*Data represents Residential Property class only.
*Pended represents the number of properties that went into contract during the course of a calendar month.

Trending Report: Dec 2023 - Dec 2025



CALIFORNIA REAL ESTATE BROKERS, INC.

Merced County



Data provided by **MetroList**® THE TRUE SOURCE Powered by **TrendGraphix** YOUR HOME FOR REAL ESTATE DATA

*Data represents Residential Property class only.

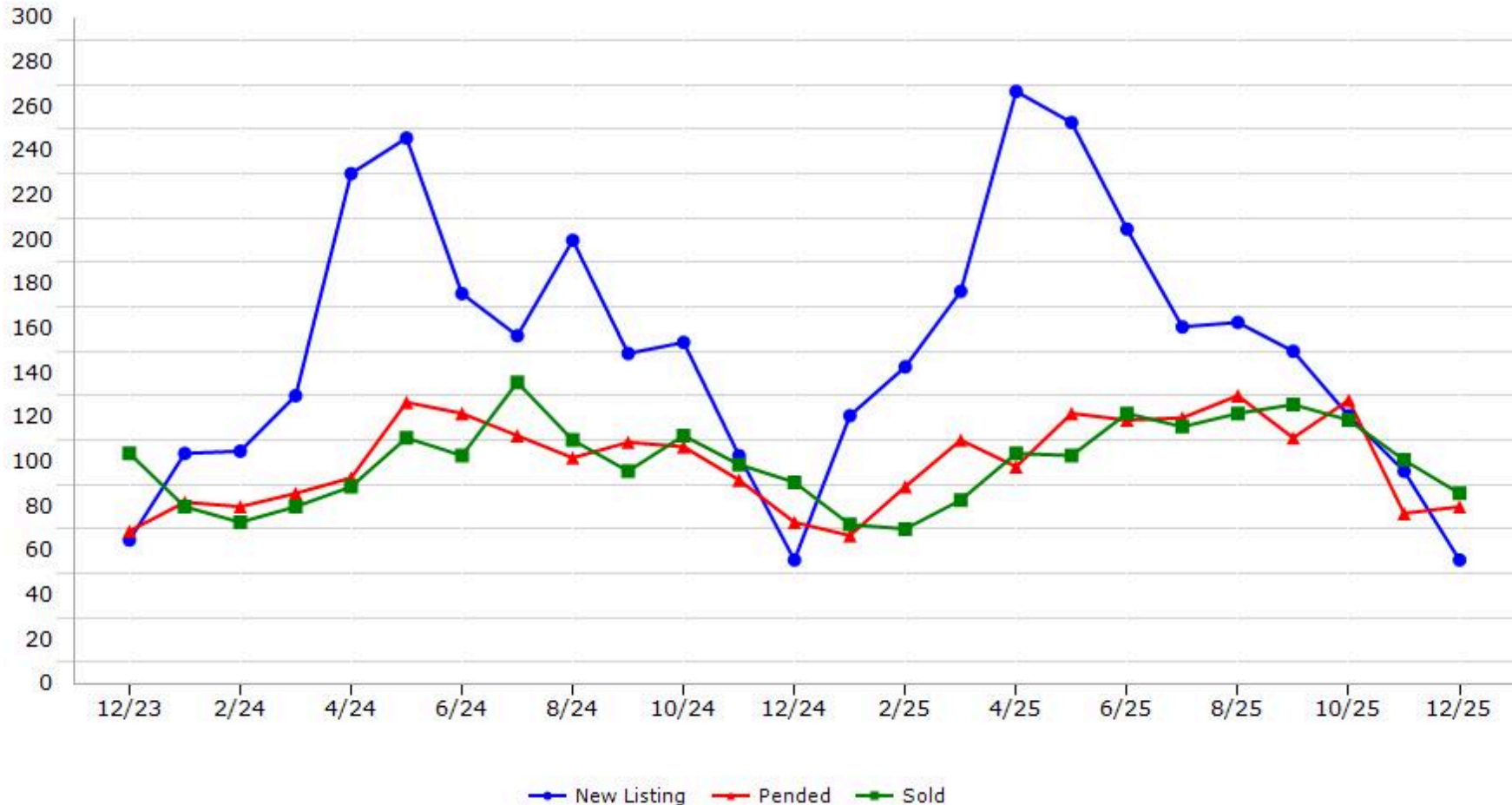
*Pended represents the number of properties that went into contract during the course of a calendar month.

Trending Report: Dec 2023 - Dec 2025



CALIFORNIA REAL ESTATE BROKERS, INC.

Nevada County



Data provided by **MetroList**® THE TRUE SOURCE | Powered by **TrendGraphix** YOUR HOME FOR REAL ESTATE DATA

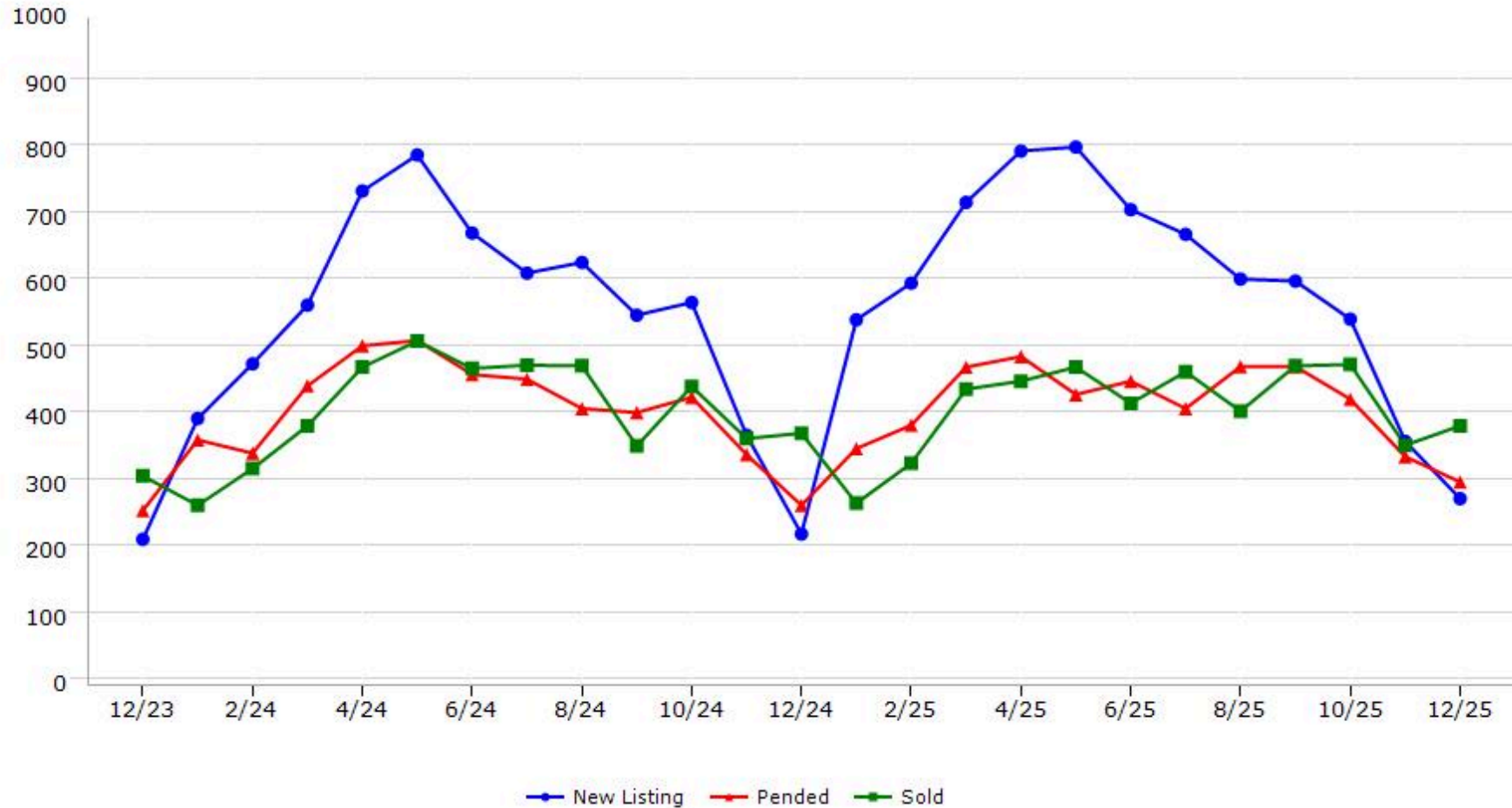
*Data represents Residential Property class only.
*Pended represents the number of properties that went into contract during the course of a calendar month.

Trending Report: Dec 2023 - Dec 2025



CALIFORNIA REAL ESTATE BROKERS, INC.

Placer County



Data provided by **MetroList**® THE TRUE SOURCE Powered by **TrendGraphix** YOUR HOME FOR REAL ESTATE DATA

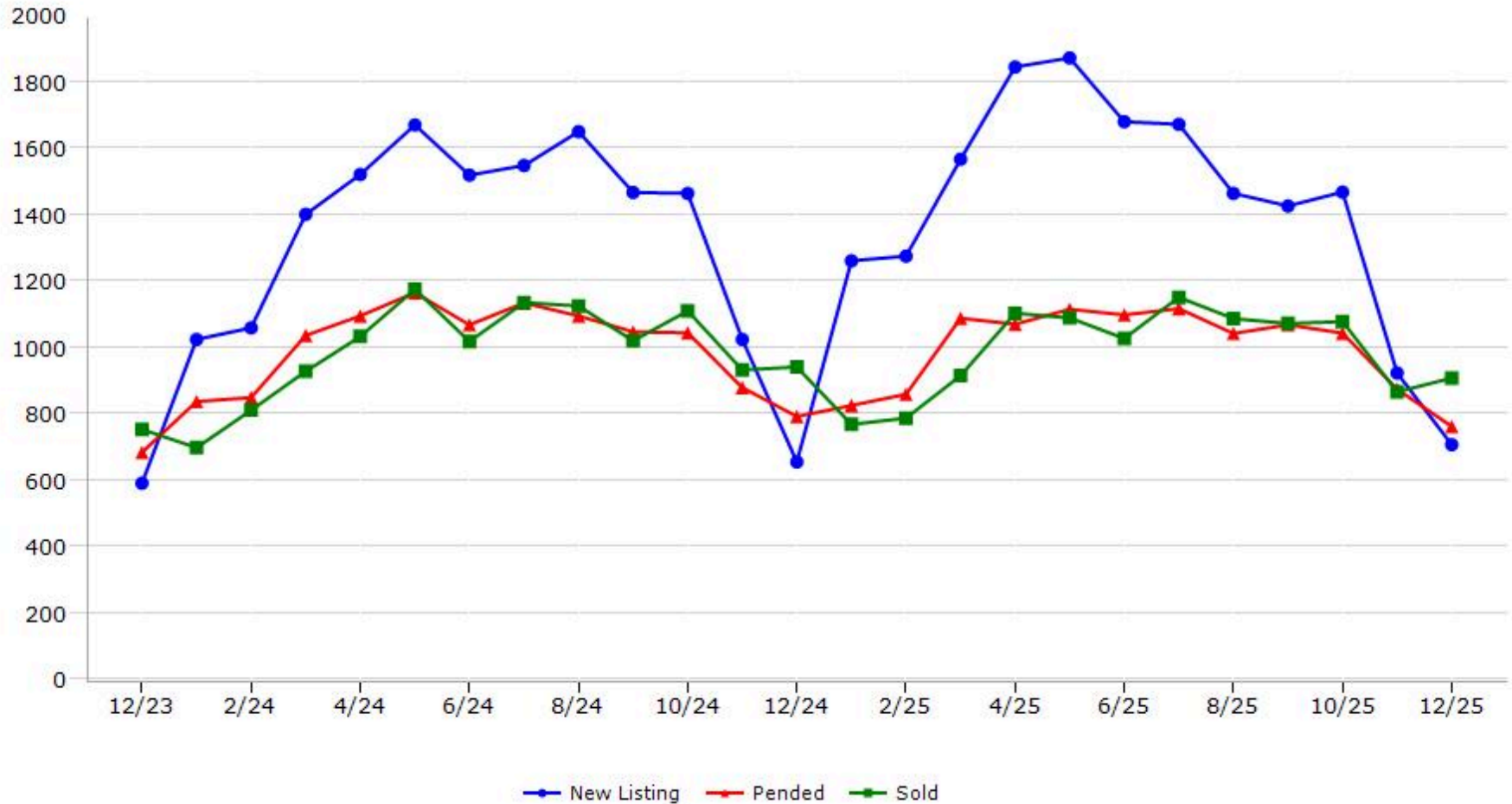
*Data represents Residential Property class only.

*Pended represents the number of properties that went into contract during the course of a calendar month.

Trending Report: Dec 2023 - Dec 2025



Sacramento County



Data provided by **MetroList**® THE TRUE SOURCE Powered by **TrendGraphix** YOUR HOME FOR REAL ESTATE DATA

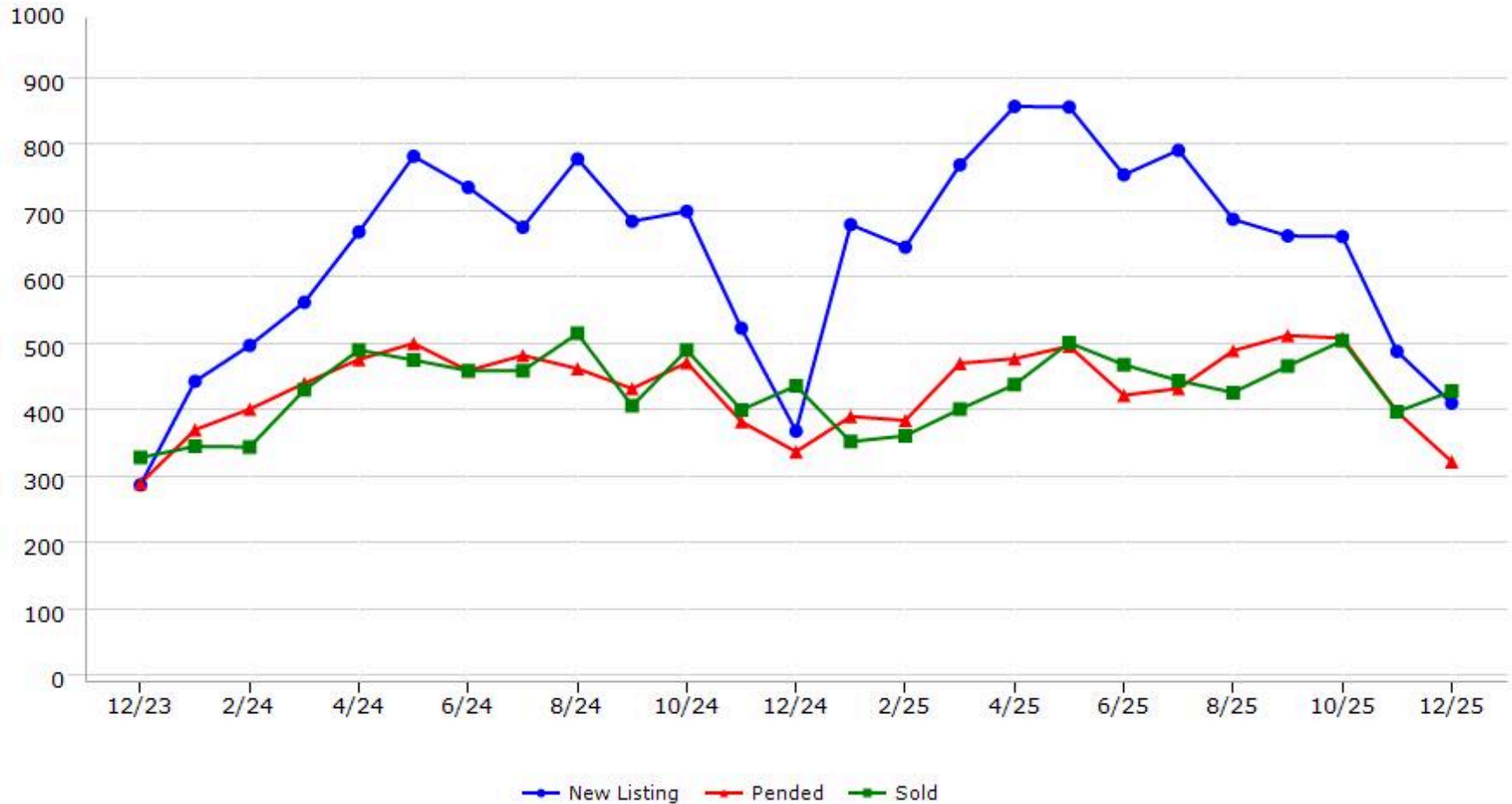
*Data represents Residential Property class only.

*Pended represents the number of properties that went into contract during the course of a calendar month.

Trending Report: Dec 2023 - Dec 2025



San Joaquin County



Data provided by **MetroList**® THE TRUE SOURCE Powered by **TrendGraphix** YOUR HOME FOR REAL ESTATE DATA

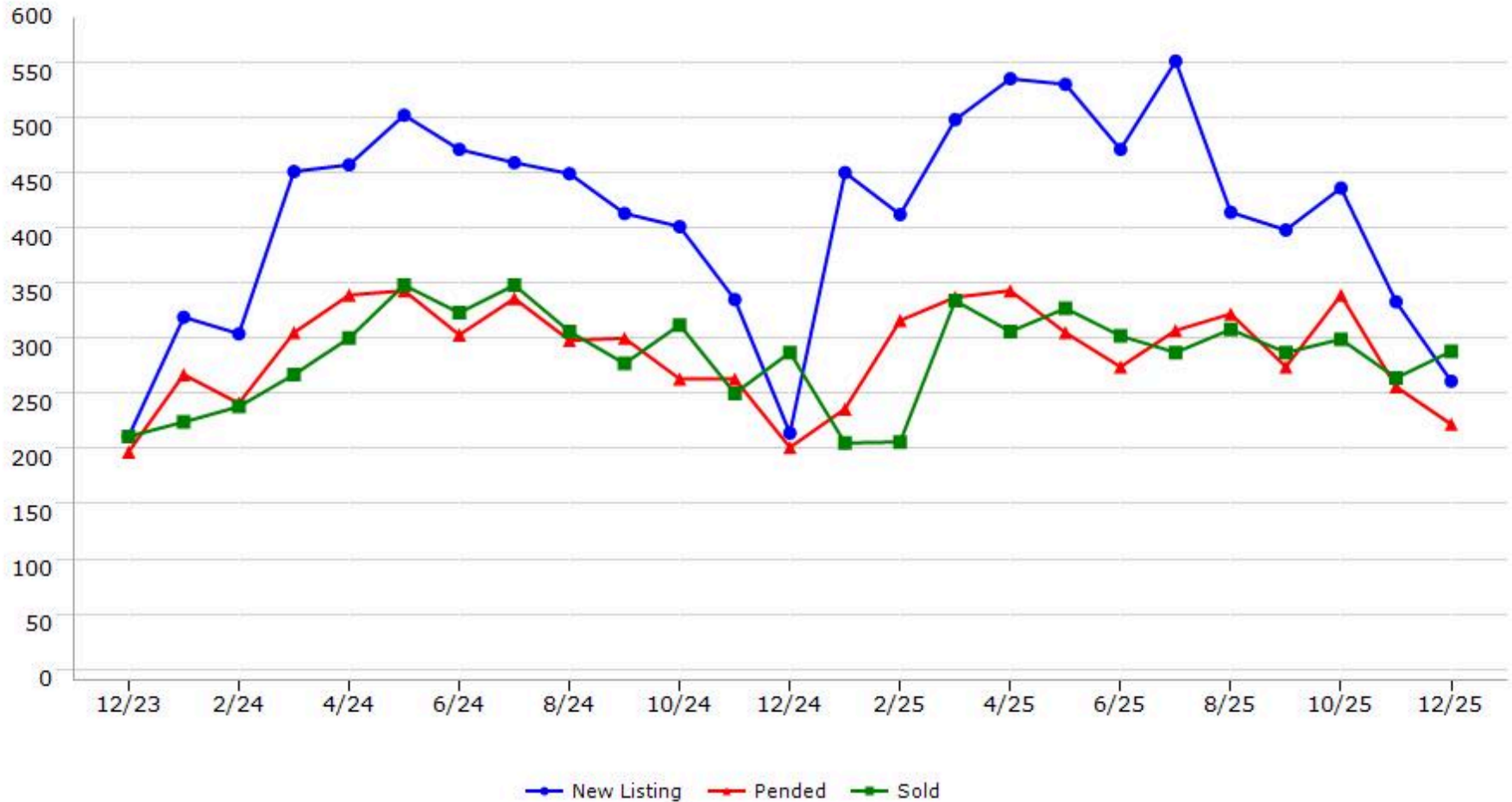
*Data represents Residential Property class only.

*Pended represents the number of properties that went into contract during the course of a calendar month.

Trending Report: Dec 2023 - Dec 2025



Stanislaus County



Data provided by **MetroList**® THE TRUE SOURCE Powered by **TrendGraphix** YOUR HOME FOR REAL ESTATE DATA

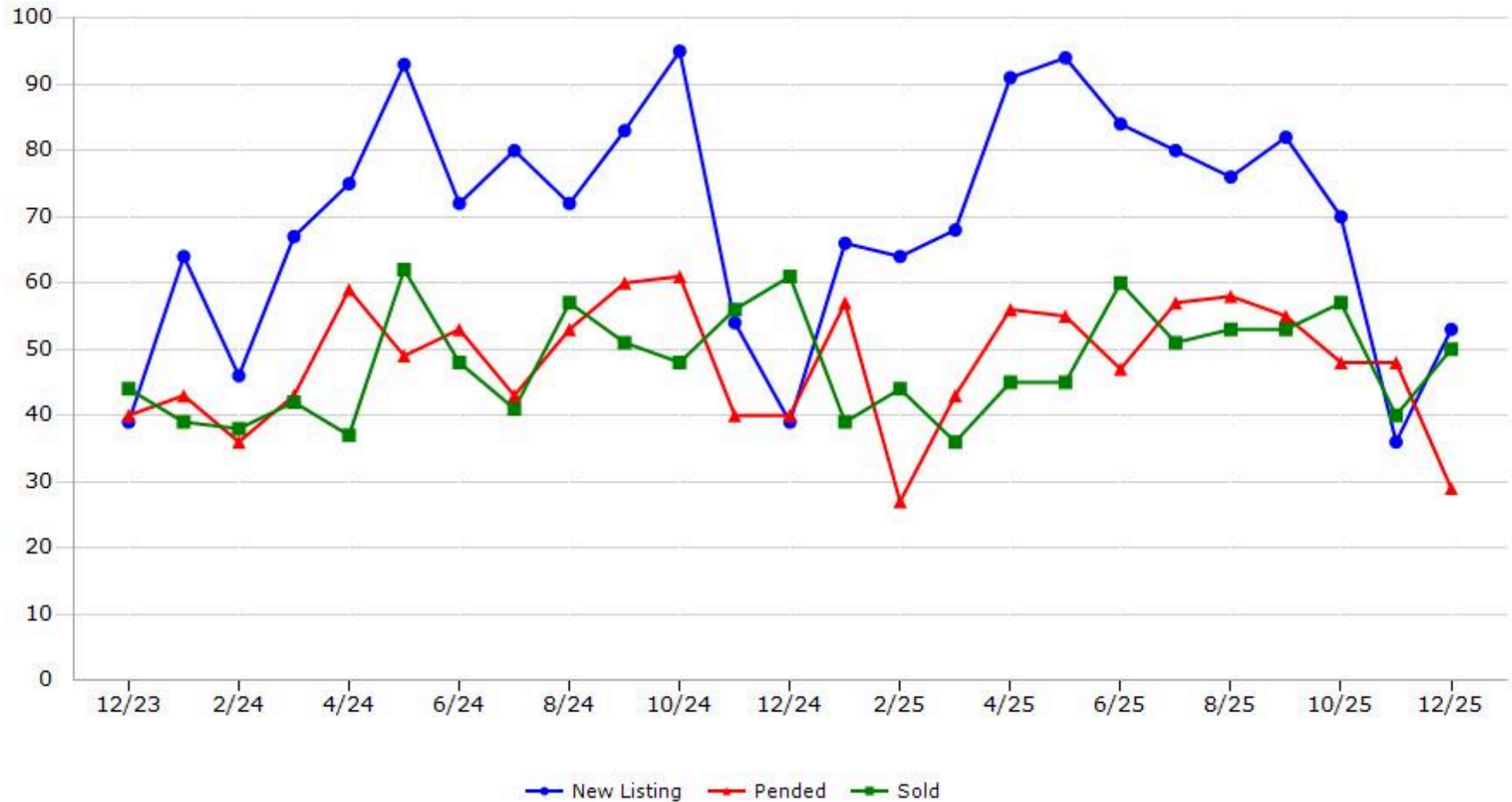
*Data represents Residential Property class only.

*Pended represents the number of properties that went into contract during the course of a calendar month.

Trending Report: Dec 2023 - Dec 2025



Sutter County



Data provided by **MetroList**® THE TRUE SOURCE Powered by **TrendGraphix** YOUR HOME FOR REAL ESTATE DATA

*Data represents Residential Property class only.

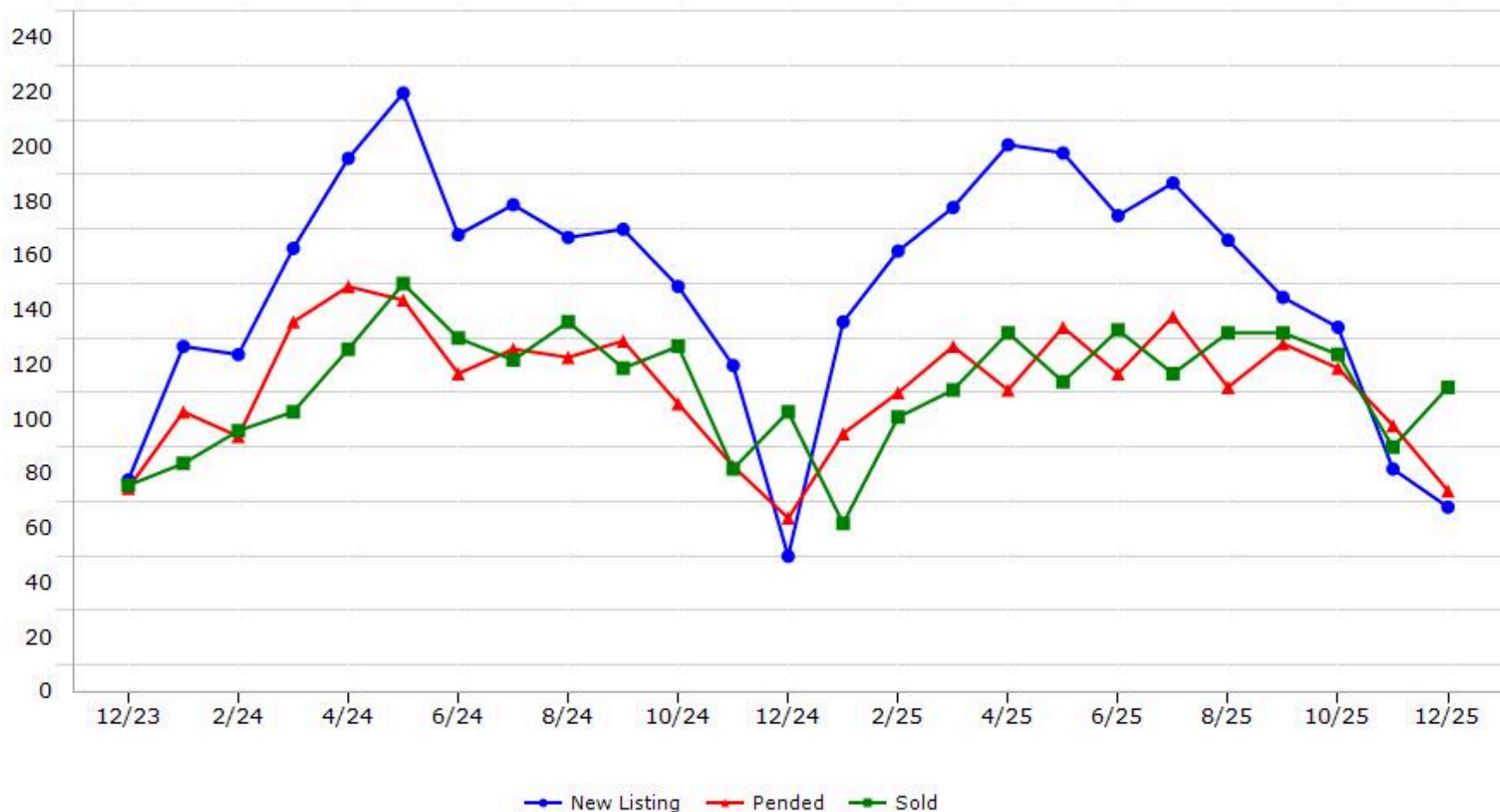
*Pended represents the number of properties that went into contract during the course of a calendar month.

Trending Report: Dec 2023 - Dec 2025



CALIFORNIA REAL ESTATE BROKERS, INC.

Yolo County



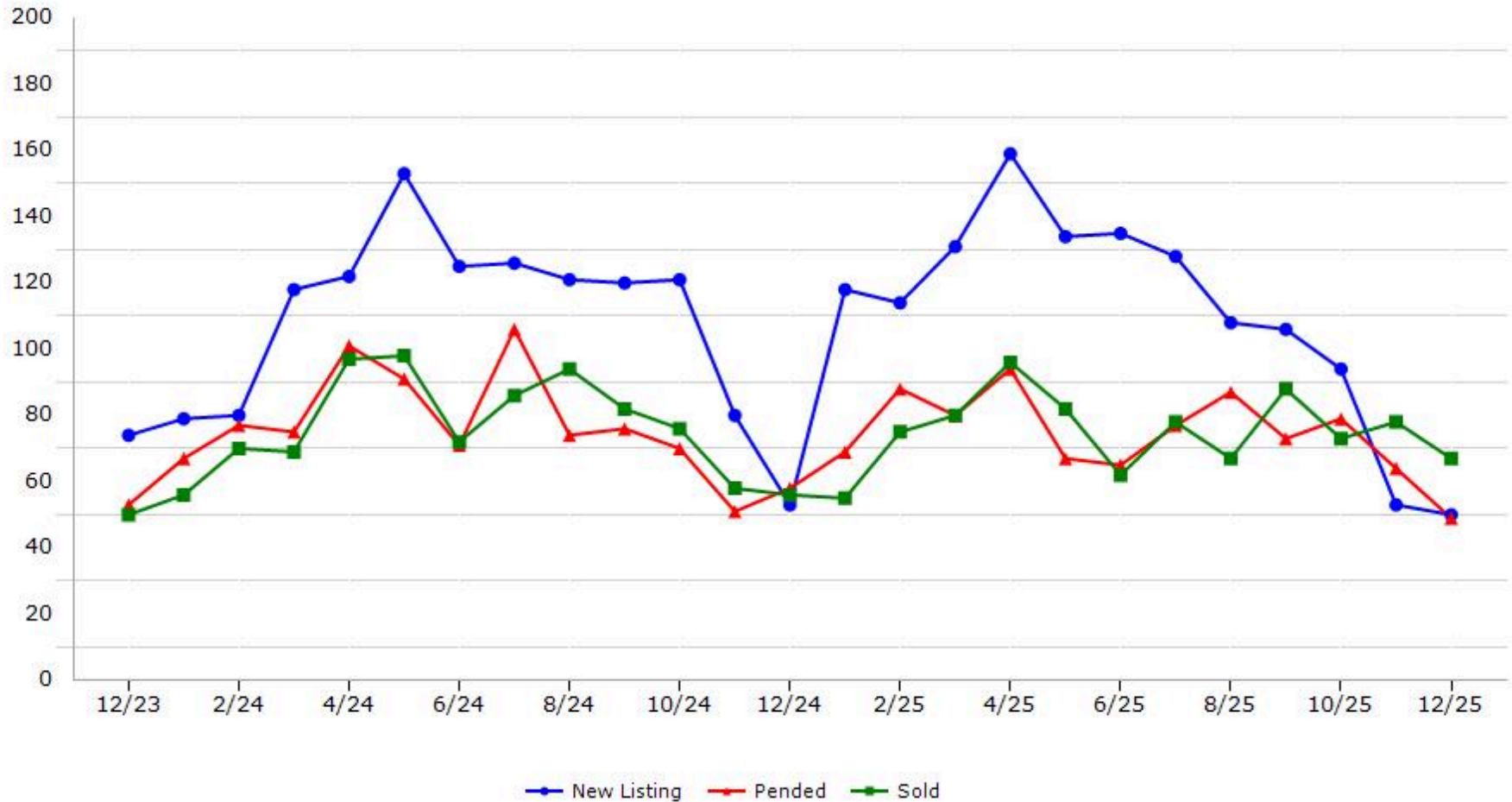
Data provided by **MetroList**® THE TRUE SOURCE | Powered by **TrendGraphix** YOUR HOME FOR REAL ESTATE DATA

*Data represents Residential Property class only.
*Pended represents the number of properties that went into contract during the course of a calendar month.

Trending Report: Dec 2023 - Dec 2025



Yuba County



Data provided by **MetroList**® THE TRUE SOURCE | Powered by **TrendGraphix** YOUR HOME FOR REAL ESTATE DATA

*Data represents Residential Property class only.

*Pended represents the number of properties that went into contract during the course of a calendar month.